

## Warren Hill Appointed Curator of National Bonsai and Penjing Museum

The U.S. National Arboretum has selected Warren Hill as curator of the National Bonsai and Penjing Museum. This museum is now the largest and most complete facility in North America devoted to the art and science of bonsai. He comes to the Washington, DC, area from California.

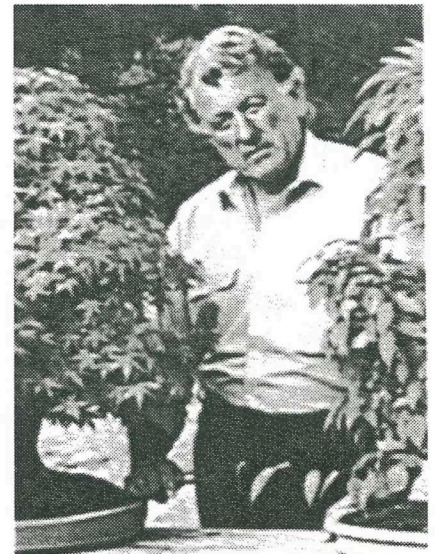
Warren Hill's education and research of bonsai have produced new concepts and understanding for growing healthy and beautiful miniature trees. Warren began studying bonsai in 1960 in southern California; and during the past 36 years, bonsai has played a dominant role in his life.

His involvement in this living art form is more than a collection of unusual trees to enjoy - it is a lifetime commitment.

Warren's credits are numerous, showing his continued interaction with the bonsai world. He has served as director for organizations such as the American Bonsai Society, Descanso Bonsai Society, and the National Bonsai Foundation, Washington, D.C. Warren is an ongoing member of the California Bonsai Society, and has served as an editorial board member for the American Bonsai Society as well. He has produced two videos on the subject of bonsai, and in 1981,

Warren was selected to exhibit in the Masterworks of Bonsai Exhibit, National Endowment for the Arts Sponsorship in Los Angeles.

A long-time friend and student of American Bonsai Master John Naka, Warren is an active participant in Mr. Naka's Nampu-Kai Advanced Study Group. What Mr. Hill has learned over the years has been invaluable as he teaches the public. Warren has lectured and taught his art to more than 100 bonsai organizations throughout North and South America and has been the featured demonstrator at numerous national and international conventions. In addition, he has taught bonsai at Moorpark College and Descanso Gardens in southern California.



WARREN HILL	1
PRESIDENT'S MESSAGE	2
EDITORIAL	2
CALENDAR OF EVENTS	3
MONTHLY CARE TIPS	3
APOLOGY	4
WINTERIZING	4
VERDERER	5
SENSEI SAM	7



The PBA Clippings (ISSN 0160-9521) is published by the Potomac Bonsai Association, Inc. (PBA), a nonprofit organization, in the interests of its affiliate member clubs and societies. Copyright 1992 PBA.

#### SUBSCRIPTIONS:

PBA Member Clubs/Societies: Annual subscription is included in the membership dues paid to the PBA Club or Society of your choice. Telephone numbers of points of contact for information about any member club or society and its annual dues, are listed on the last page of this newsletter.

#### NON-MEMBER SUBSCRIPTIONS:

Individuals residing within the Baltimore, Washington, D.C., Philadelphia or Richmond metropolitan areas are encouraged to become members of a club to receive the newsletter. Annual subscription for 12 issues of the PBA Clippings only is US \$15.00 (US \$35 for International Mail) which should be made payable to the Potomac Bonsai Association and sent to Judy Wise, 1259 4th St., SW, Washington, DC 20024.

#### Advertising Rates :

Monthly rates: 1/6 page, \$15.00; 1/3 page, \$30.00; 1/2 page, \$45.00; full-page, \$90.00. 10% discount for 6 consecutive months prepaid, 20% discount for 12 consecutive months prepaid. Direct inquiries/payment (make checks payable to Potomac Bonsai Association) to: Jerry Antel, Jr. 6409 Middleburg Lane, Bethesda, MD 20817, (301) 320-5251. Send ad copy to editor at address listed below for articles.

Please send ad copy/articles to the editor:  
J. F. Koetsch, 6709 Caneel Ct., Springfield, VA 22152; (703) 569-9378.

#### PBA OFFICERS:

President	Joe Gutierrez
1st Vice-President	Cindy Blackburn
Educ. Vice-President	Chris Cochran
Secretary	Julie Walker
Treasurer	Jerry Antel, Jr.
Membership	Judy Wise (202) 554-3045
Newsletter Editor	Jules Koetsch

#### PBA CLIPPINGS STAFF:

Editor	Jules Koetsch (703) 569-9378
Assoc. Ed./Art Dir.	Beth Potratz (703) 255-9386 Email: Bonsaist.aol.com
Asst. Editor	Jeff Stephanic
Advertising Editor	Jerry Antel, Jr. (301) 320-5251
Sensei Sam	Steve Pilacik 205 Quick Road Elkview, WV 25071
Calendar Coord	Doug French (703) 502-9426 Email: Dfrench200.aol.com

## PRESIDENT'S MESSAGE by Joe Gutierrez

Another year has ended and a new year has begun, and I wish to extend to each and every member of PBA my greetings for the New Year. Hopefully, you all had a wonderful and enjoyable holiday season, and we now pray that this Winter will be considerably milder than last Winter. By now, all of our bonsai have been put into winter protection and storage. There is time for reflection, as well as early preparation for Spring.

Our major projects for the upcoming year will, of course, be the Spring Bonsai Festival and our Fall Symposium. For the individual clubs, your preliminary shows to select trees for the Spring Bonsai Festival, as well as for the continuing guest displays at the Arboretum, will be major projects. Over the Memorial Day weekend, we should again look forward to our annual PBA Auction to be held at Behnke's Nursery.

While enjoying the Winter respite from our mundane chores, I would urge each and every one of you to be in contact with your officers and board members so that we can continue to direct the organization to provide maximum benefit to each and every member. I firmly believe that our educational programs for the Association as a whole, as well as our continuing support of the National Bonsai and Penjing Museum at the Arboretum, should continue to be top priority items for your officers and your board. Give us your input so we can serve you to the best of our ability.

I wish you all much success with your bonsai for the coming year!

## Editorial by Jules Koetsch

About 2 months ago my subscriber membership in the Brooklyn Botanical Garden provided the usual yearly bonus, BBG's Handbook #149. My bookshelf has quite a few of the handbooks which some of you readers know about because they have covered bonsai and the Japanese garden. Handbook #149 covers invasive plants, and English ivy is listed as an invasive plant. It's all over my backyard and the only thing that I can say for the ivy is that it may be keeping the soil on the slope from eroding. The cure? One has to hand pull it. Maybe I'll do that next Spring.

However, the words "invasive plants" got me to thinking about the blasted weeds that crop up in my bon-

sai pots. I consider those weeds invasive plants, although the term "invasive" is supposed to apply to non native weeds. It would be interesting if someone would write us on the subject complete with pictures and how to deal with the intruders.

My very limited knowledge of what the weeds in my bonsai pots are is not too sorely pressed since the same 3 types have been popping up in late Spring and continue to do so in the bonsai pots until the first frost. Right now there are none showing in my bonsai. But come Spring if I haven't repotted (or repotted without getting out all of the roots of the intruders from where they intertwine the root system of the bonsai), the weeds are sure to reappear.

Meeting location and club contact number for additional information is as listed unless otherwise noted in calendar listing. A member of any one club is eligible to participate in any PBA or PBA member club event.

### BALTIMORE BONSAI CLUB

Cylburn Arboretum, Baltimore, MD.  
3rd Sunday, 1 PM  
(410) 668-1868

### BOWIE BONSAI CLUB

Bowie Community Center, Bowie, MD  
Last Monday, 7 PM  
(301) 350-3586  
(202) 667-1016

### BROOKSIDE BONSAI SOCIETY

North Chevy Chase Recreation Center, Chevy Chase, MD  
3rd Thursday, 7:30 PM  
(301) 365-7621

### CHESAPEAKE BONSAI SOCIETY

Call for meeting time and location  
(410) 263-2748

### GREATER PHILADELPHIA BONSAI SOCIETY

Pennypack Watershed, Willow Grove, PA  
4th Thursday, eve.  
(215) 663-1678

### KIYOMIZU BONSAI CLUB

Clearwater Nature Center, Clinton, MD  
4th Sunday, 2 PM  
(301) 839-2471

### LANCASTER BONSAI SOCIETY

Manheim Twp. Park, Stauffer Mansion  
Lancaster, PA  
2nd Thursday, 7 PM  
(717) 872-5941

### MEI-HWA PENJING SOCIETY

(Chinese language spoken)  
Bowie Community Center, Bowie, MD  
2nd Sunday, 1 PM  
(301) 390-6687

### NORTHERN VIRGINIA BONSAI SOCIETY

Greenspring Horticultural Center, Annandale, VA  
2nd Saturday, 10 AM  
(703) 978-6841

### RAPPAHANOCK BONSAI SOCIETY

Call for meeting time and location  
(540) 775-4912

### RICHMOND BONSAI SOCIETY

Imperial Plaza, 1717 Bellevue Ave., Richmond, VA  
4th Monday, 7 PM  
(804) 527-4000 Ext. 4621

### WASHINGTON BONSAI CLUB

U. S. National Arboretum, Washington, D.C.  
3rd Saturday, 2 PM  
(202) 543-7433

Organizations sponsoring regular events of interest to PBA members:

U.S. Botanical Gardens  
(202) 226-4082

U.S. National Arboretum  
(202) 245-2726

## January

Washington Bonsai Club  
Sunday 26  
2 PM Dan Chiplis on the care and feeding of the National Collection. (Note this is different than the normal meeting day of Saturday)

Richmond Bonsai Society  
Monday 27  
7 PM Karen Carter, lecture on Pests and Disease. Imperial Plaza

## February

Richmond Bonsai Society  
Monday 24  
7 PM Bruce Stoneman, Demo with Japanese Maple.

Brookside Bonsai Society  
Thursday 20  
7 PM Peter Jones, Grafting.  
Saturday 22  
9:30 AM - 12 PM Peter Jones, Grafting workshop to be held at Shari Sharafi's house.

### Remember:

**Memberships Dues to Jerry Antel and Updated Member ships List of Addresses to Judy Wise are Due by the end of this month!!**

## January Monthly Care Tips

Now that winter has us fully in its grip and the bonsai have been bedded down and undergoing a winter's nap or are they? There are some who feel that conifers, especially the pines, don't sleep that soundly and don't mind an occasional weak solution of fertilizer. You're on your own with that one. The paramount thing to do is keep an eye on whether or not the bonsai are not drying out from lack of watering. Believe it or not there have been people naive enough to put their plants in winter storage and think that they will survive with no further attention until Spring breaks through. It's hard to get geared up to go out to the poly-house or the outside area where the bonsai are wintering when the weather is cold. It still should be an every day affair. One caution to observe when storing bonsai in a poly-house, glasshouse, or cold frame - the surface of the soil in the pot may appear damp but the sub-soil may be dry. This is due to the fact that the moisture in the enclosure settles on top of the soil camouflaging what the conditions are inside the pot. Good for moss but not

the plan. By the way, have you removed all the moss from the surfaces of the soil? Remember, leaving it in place will invite root rot. Watering needs: Conifers and deciduous plants may need water every day. Flowering bonsai such as Crab apple, Crepe myrtle, Forsythia, Quince and fruit bearing such as Holly may only need water every other day. Needle junipers and Sub-alpine fir - mist every day. Pruning - no you haven't escaped this task. This is a good time to refine your deciduous trees since the leaves are not obscuring the branches. **PRUNE ALL MAPLES BEFORE MARCH** otherwise you will have to wait 2 months. If pruned in the above interval when the sap is flowing, a maple may literally "bleed to death." White pines can have branches removed during this month. Black pines can have their 2 year or older needles removed and needles on the ends of sprouts can be reduced in number to 2 or 3 fascicles or needle pairs for the upper section, 5 to 7 for the mid-section and 9 to 11 for the lower section of the pine.

## ANCIENT CELTIC TREE HOROSCOPE REVISITED by Jules Koetsch

When my wife and I visited France last Fall, we happened to spend a night in the quaint, old German town of Oberkirche. While there, I visited a bookstore to see if there were any interesting books on bonsai. There were none; but I remembered that while in Germany in 1986, I found a paperback covering the current Celtic tree horoscope. (Later that year, the PBA Newsletter contained an article based on information from that paperback.) I asked the clerk if she had any book on the subject. After a hurried search, she informed me that their stock had been depleted, but she would have a copy by 8:30 next morning delivered from an out-of-town location. I had my doubts about that coming to pass, but she assured me there would be no problem - like how could I think such a thing.

When I returned the next morning at 8:45 a.m., the paperback, "My Tree Horoscope 1997 - The Celtic Horoscope Predicts our Fate" by Charlotte Kost, was there. German efficiency is still alive. Apparently, the Germans are still interested in the subject - after all the Celts are part of their heritage. Remember hearing about the Romans and the Gauls?

What interests me about the tree horoscope is, first and foremost, how it is organized - using trees as the signs or symbols for certain periods of the year. What reasoning did the Celts (pron. Kelts) use in making the selections? This ancient people developed the horoscope when humans were very much intertwined with nature - somewhat similar to what occurred in Asia (especially China and Japan) before the people-centered religions superseded them.

So I thought you would be interested in revisiting (or for some, visiting for the first time) the subject of the Celtic tree horoscope. Both the

1986 and 1997 paperbacks contain horoscopes for their respective years, covering each month for each tree symbol. It would be too lengthy to put all 21 Celtic tree symbols' horoscopes for each of 1997's twelve months. Hence, what follows is a compilation of the introductions to both paperbacks along with characteristic traits cited therein for the symbol under which you were born. The following for the most part are adapted from translations of the German and distinguished by their respective years. The 1986 paperback is titled "Trees Do Not Lie - Your Horoscope for 1986," Cornelia Ahlering Verlag.

1986: For thousands of years, mankind has sought to unlock the secrets of life. "Who am I?" "Where did I come from?" "Where, one day, will I go?" Scientists and philosophers, priests, and prophets have attempted to bring a light into the darkness. One of the many attempts to clear up the past and the future was and is the horoscope. Fortune telling without science? We will not meddle in such a learned dispute. We accept the horoscope as a possible means to learn more about ourselves and our fellow men. In all sincerity - here and there you can close one eye. It is a fact: almost every civilized group has it's own horoscope; the Chinese, the Indians, the Arabs - from their astrologies, today's horoscope is developed. It almost came to pass that the tree horoscope of the Celts was completely forgotten. The rediscovery of the Celtic tree horoscope (in Poland) was a sensation. The Celtic tree horoscope not only arranges for a fascinating insight into the thought world and soul of the proud Celt people, but also renders a downright amazing similarity to today's self-expression of character,

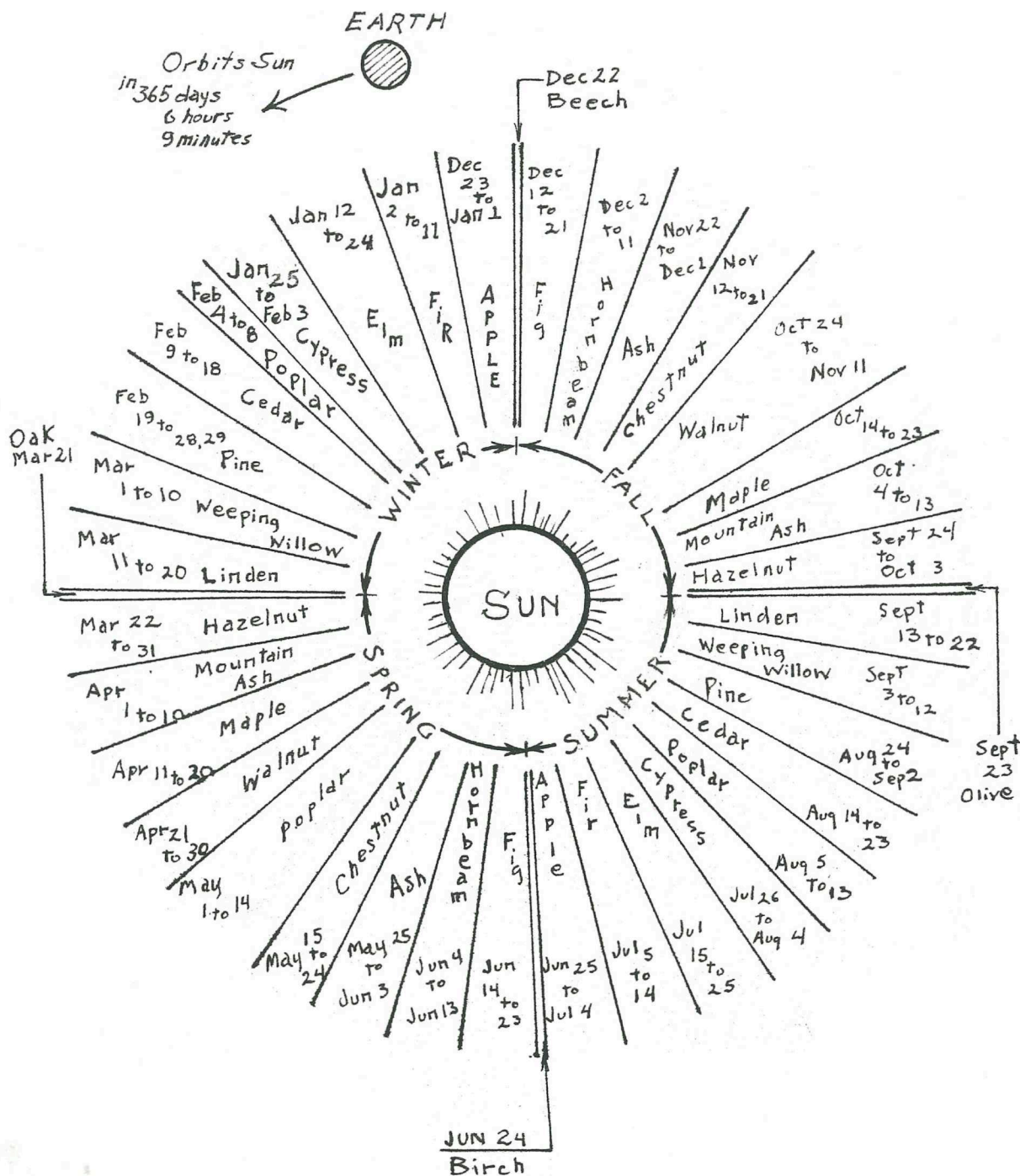
way of dealing with matters and destiny. The Celts had their biggest following between 500 and 200 B.C. At that time, they ruled the whole of middle Europe from North Germany, Bohemia and Moravia, to Brittany and deep into the Mediterranean region.

They were a rough and warlike people, but also deeply religious. Their priests were the Druids (Experts of the Oaks) who were both magicians and doctors living as hermits in the woods. There they meditated. There they collected herbs. There, ascending in white garments among specially selected oak trees and with a golden sickle, they cut mistletoe for use in their mysterious medicines.

Trees were at all times holy. They were reputed to be the houses of the gods. Whoever injured a tree was punished by death. The Celts separated a tree into three parts: The lower parts, the roots, stood for the legs and belly of a person. They furnish predictions about destiny and the unknown. The Celts believed that "If healthy roots and a strong base grow, then the tree (a person) can develop properly." The middle region, the trunk, represents the spine. This region stands for the present time, today. Standing between the roots and the crown of the tree, the trunk is the connection between the subconscious and the conscious. The upper region, the crown, describes the head and thereby the tie to a higher world.

The accompanying figure (on the opposite page) shows the Sun as the center with the Earth orbiting around it. The sectors denote the time frames for each tree symbol. For example: the Earth as it is positioned on the figure is somewhere between January 2 and 11, which has for its symbol the fir tree. Note that the major-

Continued on page 6



## Celtic Tree Horoscope, continued from page 4

ity of the tree species are represented twice and approximately one-half a year apart. Poplar is the one exception - it appears 3 times. Also, there is one species of tree for each day when the seasons change.

The Celts subdivided trees into three groups representing one of three general groupings by human characteristics. Realists - In this grouping belong the oak, beech, elm, linden, walnut, chestnut, and fig tree. People whose birthdays correspond to one of the above tree-signs have extraordinary gifts of being very observant and having a talent for organization.

Intellectuals - In this group are the olive trees, maples, apple trees, firs, cypress, cedars, and pines. People who have a tree sign in this group possess gifts of analysis and logic.

Intuitive - In this group are the birch, poplar, weeping willow, hazel nut, mountain ash, ash, and hornbeam. These "tree people" are acknowledged as having the ability to sensually grasp the reality of things and fantasies, i.e., arty types.

Personal Traits of Persons Under Specific Tree Signs

Apple - loving Ash - ambitious  
Beech - formulator Birch - creative  
Cedar - confident Chestnut - honest  
Cypress - faithful Elm - good disposition  
Fig - sentimental Fir - mysterious  
Hazelnut - unusual  
Hornbeam - good taste Linden - dubious  
Maple - Self-willed Mountain ash - delicate  
Oak - robust nature Olive - wise  
Pine - fastidious Poplar - uncertain  
Walnut - passionate Weeping willow - melancholy

1997: The tree whose growth results from the Earth's power and from the Sun's energy, is the source of a thousand possibilities for serving mankind. The horoscope agrees with that notion of worth, and uses

trees as symbols having their own functions just like those signs and symbols found in classical astrology.

Nevertheless, to put it clearly, astrology as it is always presented has nothing mystical associated with it. Merely, one is asked to have a healthy understanding and recognize and accept that there is a relationship between humans and nature. Therein natural occurrences are to be understood in the broadest sense because, above all, in our earthly environment these occurrences are interconnected as this small planet Earth moves and spins through space.

Symbols and signs such as gods, animals, and as in this instance, trees have only been conceived by humans to signify powers operating in the universe - not only those in the past but also to foretell the future. Motion or change is after all, the normal, complete locomotion in space. With a flat trajectory (tangential velocity) of about 30,000 meters per second (182 miles per second) our Earth moves around the Sun in one year, 365 days 6 hours 9 minutes, to complete the orbit. The Earth's additional rotation around its own axis producing the cycles of night and day is further evidence that fascinating natural events have occurred and can occur - events which eclipse every human fantasy.

All out-of-this-world processes are for the most part not perceptible just as are the innermost workings of the mind and soul imperceptible. The Sun in the Celtic tree horoscope is the center around which everything is happening. And that was before three smart persons during the Renaissance, through their own efforts, achieved this scientific discovery and there upon drew the enmity of other competent people.

The tree symbols of the Celts, when ranked in a cosmic order, can by virtue of the cosmic displacement of each symbol reveal the mental/emotional capacity of a person. Those so-called primitive people found that certain natural events took place during each of the 10-day periods in the Celtic horoscope. Later these were found, using astrological representation, to depict the characteristics of individuals.

### 1997 IS THE YEAR OF THE HAZELNUT

The hazelnut is the tree symbol for 1997. It is characterized by cosmic energy which in a remarkable way corresponds to that found in 10 days between March 22 and 31. There is a close tie with that time being the beginning of Spring and the other time for the tree - the beginning of Fall, September 24 to October 3. Therefore, the following aspects for 1997 are established: it is extremely rare that problems reach catastrophic proportions; quick solutions are always striven for, and one handles them the same way in both public and private life. Lacking patience, and also needing insight, one must curtail the urge not to be patient and should wait for good results. It appears as if the year 1997 will be spoiled only because there will be no one exercising self-control. It must be presumed to be a part of our fast moving times to which words "fast," "quick," "immediately," "sudden," and many more are attributed and they are well put. In any case, the worst thing to do is to avoid any spark of cosmic energy provided to offset a broken willpower.

This January issue of the PBA Clippings will feature the characteristics of the persons whose Celtic tree signs cover dates in the month of January. Since the tree signs (except-

## Bill Merritt receives Ben Oki Award for Excellence in Bonsai from ABS by Mary Ann Orlando

The American Bonsai Society (ABS) honored Bill Merritt, NBF Board Member and past Chairman of NBF's Construction Committee, with the Ben Oki Award for Excellence in Bonsai.

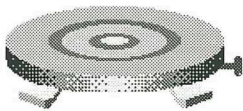
At ABS's 1996 Symposium Dinner, Martin Klein, President of ABS, said that "Over a period of greater than 20 years, Bill Merritt has contributed his expertise as a design engineer to completion of the North American Bonsai Pavilion with its accompanying Yoshimura Center for lectures and demonstrations, the Tropical Conservatory, and the International and Chinese Pavilions of our National Bonsai and Penjing Museum. His guidance and expertise in the direction of so many professionals and volunteers has resulted in a museum of bonsai that will open to countless numbers of people, to say nothing of providing the U.S. Bonsai Community with an exquisite national home for the art and science of bonsai."



"It has been said," Klein continued, "that had Bill Merritt not been there and offered his services free of charge, the Foundation would probably have been required to raise an-

other million dollars to complete our national museum. All bonsaiists worldwide owe Bill a great debt."

NBF congratulates ABS on its choice, and congratulates Bill Merritt on this well-deserved recognition.



### Sensei Sam

#### Question #1:

I found black ants on my tree along remains of where they were digging. This occurred at the top of the tree.

#### Answer #1:

I'm not sure what species ants they were. However, the treatment is fairly simple. Find the hole where the ants entered the tree and fill a syringe with a mixture of Malathion and water then inject the mixture into the hole or holes.

Ant that are crawling in the soil need to be drenched with a Malathion and water solution.

#### Question #2:

Help, I found very small worms and caterpillar on my pine tree! Within a matter of hours they had stripped a branch of needles. What can I do?

#### Answer #2:

It appears that you have been attacked by the False Web Worms. The treatment is simple, spray the tree

with a systemic insecticide such as Isotox. This will destroy the insect. However, this is a prime example of why inspecting your trees daily is so important. This type of insect whether it be a worm or a caterpillar can destroy a tree in a matter of hours. Once spotted they can be destroyed quickly. If you don't see them they will eat the total branches. These insects in the spring usually attack old growth rather than new.

## Northern Virginia Bonsai Club is scheduling Introduction to Bonsai Beginners and Advance workshop with Roy Nagatoshi.

The Introduction to Bonsai Beginner Course will be taught by Pete Jones. He will introduce students to the basic techniques of bonsai through lecture, demonstration, and hands on experience. This 4 session course will include a short history of bonsai, rules, and guidelines for selecting suitable plant materials, techniques for encouraging root and branch development, discussion of soil mixes, and soil preparation based on size and type of tree, placement of trees in the container, and recommendations for watering and fertilizing. Aesthetic considerations will include branch pruning and wiring to create a harmonious balance and aged appearance, container selection, and an introduction to different bonsai styles. At the end of the course, each participant will have created their own bonsai to take home (included in fee). Participants should bring pruners, gardening scissors, a pocketknife, and pliers if they have them.

Tentatively, we asked Roy Nagatoshi if he would be available May 15, 16, and 17, or bring your own tree, wire and materials advanced workshops. Roy is already booked for May 19 through 25.

If there are enough commitments, we can ask Roy for additional days.

If you are interested in the beginner course and/or the Nagatoshi Advanced Workshop, please complete the registration form, circle the date and time you wish, and return it to your club treasurer. Once your requested course/workshop times are confirmed, a \$20.00 deposit will be required to reserve your space.

The balance is due by February 28, 1997.

Registration is limited to 10 per Beginners course/Advanced Workshop

Name: \_\_\_\_\_ Telephone: \_\_\_\_\_  
Address: \_\_\_\_\_  
\_\_\_\_\_  
\_\_\_\_\_

Dates/Times:

Beginners Course Fee: \$50.00 and the dates are March 29, April 5, 12, 19, 1997

Nagatoshi Advance Workshop Fee \$45.00 per session

May 15, from 9:00 a.m. to 12:00 or from 1:30 to 4:30

May 16, from 9:00 a.m. to 12:00 or from 1:30 to 4:30

May 17, from 9:00 a.m. to 12:00 or from 1:30 to 4:30

**MAKE CHECKS PAYABLE TO NVBS**

Mail to: Judy Wise  
1259 4th St SW  
Washington, DC 20024



## Celtic Horoscope, continued from page 6

ing four) also cover dates in other months, those persons whose birth dates also fall under the tree signs for January will have their characteristics printed herein. Succeeding issues of the PBA Clippings will print the personal characteristics for people with birth dates in the month of issue, you will have to be patient.

APPLE TREE Dec. 23 - Jan 1 and June 25 - July

1986: The apple tree person possesses much charm and grace; an until old age, retains an unusual radiance and appeal, especially to the opposite sex. In spite of a weakness for flirting and adventure, the apple tree person is basically a faithful and above all tender partner. When disagreements occur, others play on your good nature and generosity. The life of an apple tree person is above all never quiet or boring but mostly exciting and interesting. Really, this person lives from day to day, can attain much under favorable conditions, and can come to be dignified and respected.

1997: Cosmic energy is effectively obtained, which makes a self-managed richness feasible. Yet, self-earned or bequeathed wealth is not used for personal comfort as is not the case for people under

other tree symbols. Power and insight are ever visibly evident in the preparation and striving to reach a goal. To reach a goal, a stable approach is used accompanied by clever thinking.

In the main, all desires and thoughts lead one to a position of public service. But it is not only that. Those with this tree symbol learn in good time to keep their eyes open; and thereby find that there are a thousand possibilities. But it is with considerable difficulty that one finds a clear way to overcome any obstacle

in the way. The mental powers for learning are outstanding, and with outrageous perseverance and endurance are further perfected. The admiration exhibited from both near and far is obvious. Regrettably, among the admirers are those who have not personally conducted evaluations. Behavior is characterized by an unusual seriousness about life and an unusual version of duty. Rarely is unconcerned, carefree laughter heard.

Deep feelings for one person is a capability but the ability to express those feelings is missing. Artistic creativity achieves balance such that heart and mind are satisfied. Hence, human compassion is not seriously missed.

After 30 years of life one shows a rise in energy which is ongoing.

FIR Jan. 2 - Jan. 11 and Jul. 5 - 14

1986: The fir tree person is sharp and cool. In company, this person impresses people through dignity, reserve and cultivated behavior. This person possesses extraordinary tastes, likes jewels and beautiful furniture, generally the beautiful in any form. Frequently, the fir tree person is moody and obstinate, demands much in love, and gives very little of himself. Nevertheless, this person is a true and reliable partner and is even prepared to sacrifice much. This person's outspoken ambitions and diligence in pursuing them render it possible for this person to successfully mix uncommon talents and intelligence successfully in a number of occupations. In an emergency this person is a true friend.

1997: The fir tree person is mentally adapted to dreaming, loving and having a certain amount of forcefulness. A true explanation for this person's behavior does not exist

The fir tree person's real merit is in the recognition of all of life's possibilities. When exposed to double-talk, the fir tree person, by recognizing such behavior, can matter of factly present a tough exterior to it. In such cases in no way is double-dealing to be disavowed. It merely signifies that one knows how to get along with people depending on which stratum of society is being listened to.

Perseverance, always an accepted quality, is used as the basis for the conviction that it alone leads to the accomplishment of any endeavors. Unfortunately, in so doing one overlooks that beauty, pleasantness, sweetness, and affection exist. Being so disposed together with the characteristics of being deliberate, clever, and extremely subtle plus having knowledge based on experience, one ventures into diplomacy.

A love relationship is under a good star, but the partner must have patience and be broad minded. A deciding phase in life can be between 30 and 40 years of age, is when flirting occurs which can be perhaps too strongly paraphrased, "In no case am I a mourner, all things equally come to pass." With such an attitude, how can it be otherwise: once the love-sickness stops the kindness of the heart comes out. The cosmic power of Venus, in combination with the magnetic power of the Moon, are completely available. It is without reservation how that appears in all myths. It is without reservation that it was not original to the Celts that the above applies to a feminine nature.

ELM Jan. 12 - Jan. 24 and Jul. 15 - Jul. 25

## Horoscope, continued from page 9

1986: The elm tree person single-handedly excites attention immediately through that person's handsome figure. The elm tree person understands how to dress tastefully, and how to be well-groomed. This person is quiet, commanding in appearance but rather modest. This person's high demands cause others to be sensitive. The elm tree person does not enjoy obeying others, but rather likes to command. In the marital partnership, this person is honest and faithful, and the family obligation is truly taken with the utmost seriousness.

Generosity and broad-minded attitude are in striking contrast to inclinations to be dogmatic. This person is full of fun and practical, displays an active and awake intelligence and an above average understanding. This person's life experiences shape this person with foresight and reason.

1997: Elm people are idea oriented. Besides being mentally active, they are also physically active. Even with annoying changes, you can make spontaneous decisions and ever so quickly change your position based on new knowledge. That confirms the statement: the head must keep pace with your changing situations and adapt there to your physical state.

Convictions, opinions, even philosophic knowledge can by necessity be changed. When such an interchange occurs, the new points of view taken do not correspond to those previously held.

Elm people place importance on the precise meanings of words when communicating beliefs and mistrusts. Those born in January show for the most part a reserved nature which they abandon only when with people

who are who conversent with the subject matter. In personal contacts, their own egos come to the fore.

Elm people born either in January or July have the special advantage of being able to correctly analyze favorable possibilities, and then have the resulting joy of making an ever-so-safe or secure decision.

Acquiring knowledge, whether it be difficult or easy, enables the elm person to always progress. Also the elm person learns by arranging to study everything that clever, experienced people say or have written. A social life is wanting and is only pursued occasionally to escape inner loneliness. However, for both the January and July people, that does not mean you are suited to being a hermit or ascetic.

A basic air of power, in combination with the active cosmic energy that is present, puts a complete personal failure out of the question.

For those born under the elm symbol a befitting cocktail for life has been mixed - an entirely suitable one signifying life is a beautiful institution.

CYPRESS Jan. 25 -Feb. 3 and Jul. 26 - Aug. 4

1986: The cypress person is a flexible character with a serene and optimistic nature. This person's outward appearance is that of a solid, stalwart, and muscular individual. Two things are important - a healthy future and much recognition. The cypress person likes the company of other people and has a stormy, unsettled love life. On the other hand, friends consider you to be benevolent and faithful. Often you become violent, hot-tempered and obstinate if it concerns maintaining your own interests. Thank your wide-awake intelligence and your faculty to keep everything in-perspective for you to

have determined what your life-work will be and how to equally distribute work and pleasure! Nevertheless, though you need some small amount of luck, you are never contented with what you get.

1997: People born anywhere from January 25 through February 3 have been ordained among other things, with a masculine disposition accentuating an easy-going one. Still, that does not mean that it will be a life without stress. Highly original ideas can be developed where no past knowledge or experience play any part.

This person is entirely satisfied with companions in his own stratum of society. A very cold person as shown both by intellect and temperament, thus causing a completely alien reserve. In some instances, unusual company is kept. The cypress person must not have a family which has in that cypress person's earliest youth (and even later into maturity) tried to make corrections to the cypress person's persona.

As a thinker, the cypress person finds fertile ground in philosophy and reform which even applies without exception to cypress women. Your own thought processes adapt well to artistic careers (especially in the theater and film). In a similar vein, the cypress people born on any of the dates within the January 26 - August 4 period also are of concern because in that time frame the moon with its magnetic power plays an additional role. Moods that quickly change to-and-fro come into play and cause a completely puzzling love relationship with which one can hardly even begin to deal. That's an important piece of advice which must especially be taken into account whenever you are obliged to do anything special with children.

Matsu-Momiji  
Nursery



Japanese Black  
Pine  
by Steve Pilacik

The most comprehensive English book on Japanese black Pine. (*Libro de texto en Espanol puedo ser ordenado.*)

- ☆ Over 50 pages
- ☆ 34 detailed sketches
- ☆ 23 Photographs

To order: Send \$15.95 plus \$2.00 shipping and handling for surface mail in US. For airmail shipment to Canada and Mexico add \$4.00 shipping and handling, elsewhere add \$9.00. Wholesale inquiries welcome. Bonsai catalog - \$2.00  
205 Quick Rd.  
Elkview, W. VA. 25071  
304-965-2705

Editorial, continued from page 2

First on my weed list is what I think I have identified as creeping oxalis. That stuff if left alone drives a root into the soil defying removal by just tugging on the portion of the plant exposed above the soil line. It's like a dandelion - if you don't get the whole root the oxalis recovers, grows more rootage in rebuttal and becomes more tenacious. I find that a sharp pointed object such as an ice pick, driven into the soil at the point the oxalis is emerging, will loosen the soil and allow removal of the oxalis roots most of the time.

The second weed is something similar in appearance to oxalis. It spreads very quickly with deep rooting, but is easy to pull up.

The third unwanted guest is the moss (I call it that) which creeps up the exposed roots and the base of a bonsai's trunk. I've resorted to scrubbing that moss off of the roots and trunk using a stiff bristle brush. An

old toothbrush will work in many cases; but for the stubborn moss, a wire brush will do the job. In either case be careful not to scrape too hard and injure the bark. It seems that once this moss gets started, you have to keep up the brushing until there is no evidence of it reappearing. The best defense against this problem is to leave a space between the moss and the exposed roots/base of the trunk when placing moss on top of the soil of a bonsai

In all of the above cases, you might say that if I had been vigilant and spotted the above invasives in my bonsai pots, I could have nipped their further growth in the bud. I guess I'll have to try harder. Although it seems that once the wind, birds, or whatever mystic forces spread the seeds of the invasives, they grow with lightning speed. Would that my bonsai grew as well.

**BONSAI ASSOC., INC.**

3000 Chestnut Avenue, #106  
Baltimore, Maryland 21211  
(410) 235-5336



YOUR EVERYTHING FOR BONSAI COMPANY

CATALOG \$2.00 REFUNDABLE

<b>BOOKS</b>	<b>TOOLS</b>	<b>INSTRUCTION</b>
<b>PLANTS</b>	<b>SOIL COMPONENTS</b>	<b>LECTURES, DEMOS</b>
<b>POTS</b>	<b>ANNEALED COPPER WIRE</b>	

Call or write for current schedule of classes

**PBA PINS  
COLLECTABLE  
AND  
TRADABLE**

**PBA MEMBERS CAN PURCHASE PBA  
PINS AND IBC'96 PINS AT \$2.50. ADD  
\$0.75 FOR POSTAGE, AND MAIL A  
CHECK MADE OUT TO PBA TO:**

**PBA PINS  
4228 BERRITT STREET  
FAIRFAX, VA 22030**

# POTOMAC BONSAI ASSOCIATION MEMBERSHIP APPLICATION

Welcome! We conduct a Spring Show and a Fall Symposium as well as other events. PBA is made up of the clubs listed to the right. Join one club and be eligible to attend any club's meeting, in addition to receiving *PBA Clippings* monthly. Residents of Annapolis and Baltimore, MD; Lancaster and Philadelphia, PA; Rappahanock, Richmond, Northern VA and the Washington, DC metropolitan areas are expected to join a club to receive all membership benefits including *PBA Clippings*.

**To become a member, call the contact person of the nearest club for current rates and where to send this application and dues. (Please make check payable to the club joined.)**

**Individuals residing beyond commuting distance of a club are invited to subscribe to PBA Clippings.** For a subscription only (does not include participation in club events), complete application and mail with a check payable to PBA for US \$15.00 (US \$35.00 for an international subscription) to: Judy Wise, 1259 4th St., SW, Washington, DC, 20024. For additional information, please call Judy Wise: (202) 554-3045.

*Regular meeting times and places are listed. Meeting times and locations are subject to change. Call first! Events are listed monthly in the Calendar section of PBA Clippings.*

- |   |   |
|---|---|
| <input type="checkbox"/> Individual Club Membership<br>(Includes <i>PBA Clippings</i> )         | <input type="checkbox"/> <i>PBA Clippings</i> , Subscription Only, US \$15<br>(does not include club activities)          |
| <input type="checkbox"/> Family Club Membership<br>(Includes one copy of <i>PBA Clippings</i> ) | <input type="checkbox"/> <i>PBA Clippings</i> , International Subscription, US \$35<br>(does not include club activities) |
| <input type="checkbox"/> Baltimore Bonsai Club  | <input type="checkbox"/> Greater Philadelphia Bonsai Society  |
| <input type="checkbox"/> Bowie Bonsai Club  | <input type="checkbox"/> Kiyomizu Bonsai Club   |
| <input type="checkbox"/> Brookside Bonsai Club  | <input type="checkbox"/> Lancaster Bonsai Society   |
| <input type="checkbox"/> Chesapeake Bonsai Society  | <input type="checkbox"/> Mei-Hwa Penjing Society  |
|   | <input type="checkbox"/> Northern Virginia Bonsai Society   |
|   | <input type="checkbox"/> Rappahanock Bonsai Society   |
|   | <input type="checkbox"/> Richmond Bonsai Society  |
|   | <input type="checkbox"/> Washington Bonsai Club   |

Name \_\_\_\_\_

Address \_\_\_\_\_

Address \_\_\_\_\_

City \_\_\_\_\_ State \_\_\_\_\_ Zip \_\_\_\_\_ +4 \_\_\_\_\_ Country \_\_\_\_\_

Telephone: Home: (\_\_\_\_) \_\_\_\_\_ Office: (\_\_\_\_) \_\_\_\_\_

**BALTIMORE BONSAI CLUB**  
Cylburn Arboretum, Baltimore, MD.  
3rd Sunday, 1 PM  
Elaine Kendall, (410) 426-5421

**BOWIE BONSAI CLUB**  
Bowie Community Center, Bowie, MD  
Last Monday, 7 PM  
Terry Adkins, (301) 350-3586

**BROOKSIDE BONSAI SOCIETY**  
North Chevy Chase Recreation Center, Chevy Chase, MD  
3rd Thursday, 7:30 PM  
Jerry Antel, (301) 320-5251

**CHESAPEAKE BONSAI SOCIETY**  
Call for meeting time and location  
Marc Jartman, (410) 263-2748

**GREATER PHILADELPHIA BONSAI SOCIETY**  
Pennypack Watershed, Willow Grove, PA  
4th Thursday, eve.  
Larry Chiger, (215) 663-1678

**KIYOMIZU BONSAI CLUB**  
Clearwater Nature Center, Clinton, MD  
4th Sunday, 2 PM  
Essie Wilson, (301) 839-2471

**LANCASTER BONSAI SOCIETY**  
Manheim Twp. Park, Stauffer Mansion  
Lancaster, PA  
2nd Thursday, 7 PM  
Ken Morgan, (717) 872-5941

**MEI-HWA PENJING SOCIETY**  
(Chinese language spoken)  
Bowie Community Center, Bowie, MD  
2nd Sunday, 1 PM  
Akey Hung, (301) 390-6687

**NORTHERN VIRGINIA BONSAI SOCIETY**  
Greenspring Horticultural Center, Annandale, VA  
2nd Saturday, 10 AM  
Chuck Croft (703) 978-6841

**RAPPAHANOCK BONSAI SOCIETY**  
Call for time and meeting location  
Todd Stewart, (540) 775-4912

**RICHMOND BONSAI SOCIETY**  
Imperial Plaza, 1717 Bellevue Ave., Richmond, VA  
4th Monday, 7 PM  
Jim Ford, (804) 527-4000, ext 4621

**WASHINGTON BONSAI CLUB**  
U. S. National Arboretum, Washington, D.C.  
3rd Saturday, 2 PM  
Julie Walker, (202) 547-8497

NONPROFIT ORG.  
U.S. POSTAGE  
PAID  
MERRIFIELD, VA  
PERMIT NO. 659

Potomac Bonsai Association, Inc.  
c/o U.S. National Arboretum  
3501 New York Avenue, NE  
Washington, DC 20002