



"I picked this one up from an old Arapaho Medicine Man on the way back from Pasadena."

Committee To Meet

A meeting of the PBA National Arboretum Bonsai Committee will be held at the home of PBA President John Hreha on September 13 at 7:30 p.m. John Hinds is committee chairman.

Discussion will center on details of arrangements for dedication of the National Collection as part of the program of the BCI '76 Convention.

Got ideas, hints, suggestions about our activities? Don't keep them to yourself. Call the Newsletter editor!

Reston Club Forming

Fifteen Reston residents met August 2 to discuss the feasibility of organizing a bonsai club in that area. On hand to set the scene were PBA President John Hreha and Past-President Jim Newton. John styled a nursery-grown Juniper (*Juniperus chinensis* San Jose).

The group indicated a unanimous desire to establish a club open not only to Reston residents, but those from Herndon, Sterling Park, and other surrounding Va. areas. Mrs. James S. Jackson was appointed interim chairman to develop organization planning steps.

The group's second meeting was held on August 29. Both John and Jim were again on hand, this time with sample club constitutions and advice about how to set up a workable organization. They also advised the fledgling bonsaiists of the benefits of membership in PBA.

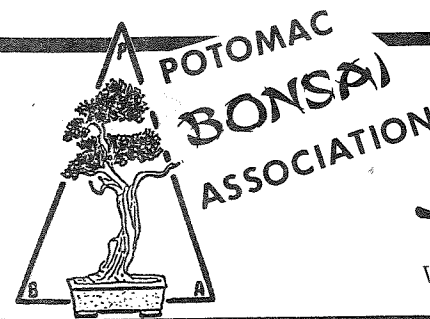
At an August 29 meeting, the group unanimously selected Mrs. Jackson Interim President, pending development of a club constitution.

Next meeting of the Reston Bonsai Club (interim name) will be on September 27, and will be a beginners workshop conducted by PBAers John Hreha and Jim Newton, who will provide all necessary materials.

AUCTION...

(from page 5)

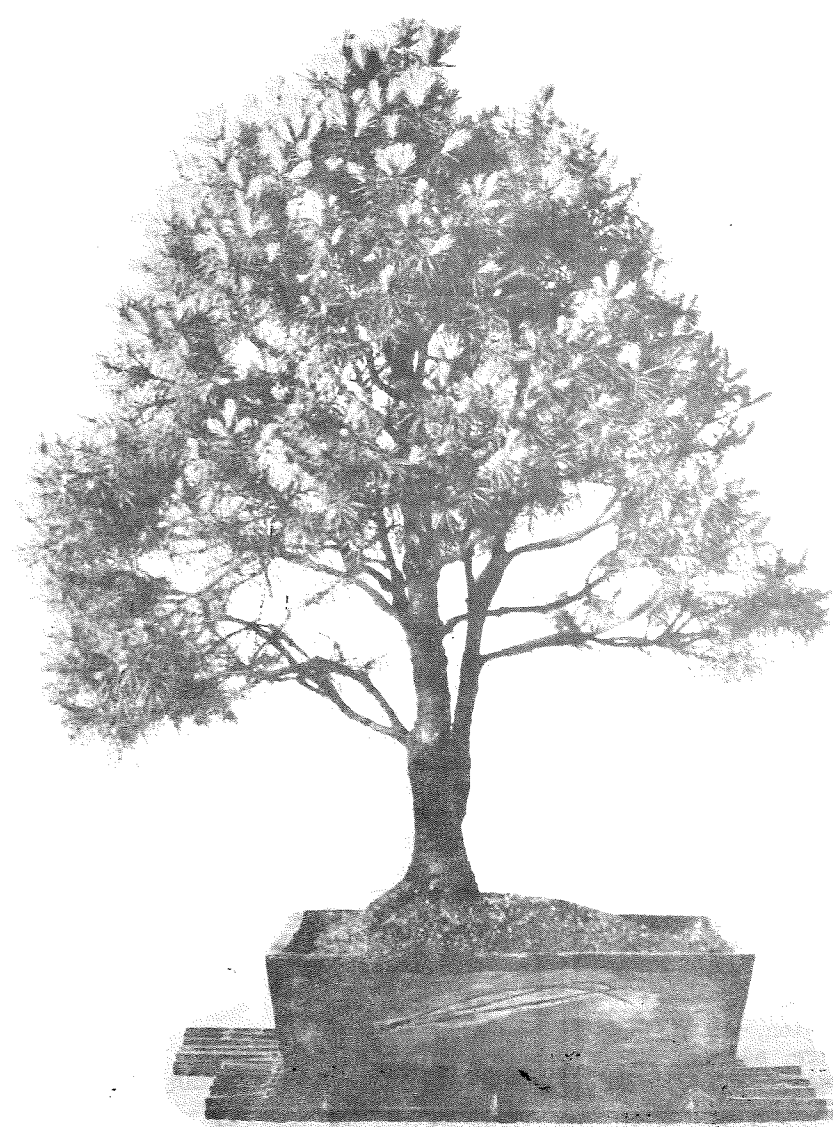
Capper's is located on Route 7, one-half mile west of Tysons Corner, Va. Use the Beltway (I-495) to Route 123 and turn right off 123 onto Route 7, west, at Tysons Corner.



Newsletter

Vol. 4, No. 9


September 1974



DEODAR
CEDAR


CEDRUS DEODAR in brown rectangular pot stands tall in Third Annual PBA Bonsai Show last April. New growth on this healthy tree, property of NOVABON-SOC member, looks almost like a profusion of flowers. This was one of the larger - 24 or more inches - entered in the Show, and drew steady visitor attention.

(Photo by Suniewick)



Potomac Bonsai Association
c/o National Arboretum
24th & R Streets, NE
Washington, D.C. 20018

SEP 29 PM 1974
WASHINGTON DC (HE)



We hold these truths...
UNITED STATES 10c

TO: MILTON R. KIDD •
18010 Elgin Road
Poolesville, Maryland 20837

FIRST CLASS MAIL



POTOMAC BONSAI ASSOCIATION

Newsletter

Published solely in the interests of the POTOMAC BONSAI ASSOCIATION, a non-profit organization, and its affiliate member clubs and societies, under the authority of its Board of Directors.

POTOMAC BONSAI ASSOCIATION

c/o National Arboretum
24th & R Streets, NE
Washington, D.C. 20018

Officers for 1974-75

John Hreha.....President
John Hinds.....First Vice-President
Richard Meszler.....Ed. Vice President
Joyce Pelletier.....Secretary
Molly Hersh.....Treasurer

Member, American Bonsai Society
Member, Bonsai Clubs International

Address Newsletter submissions to
6394 Eighth Circle
Alexandria, Virginia 22312
or call

JAMES R. NEWTON, Editor
(703) 256-3623

CLIFTON POTTBERG, Education Editor
(301) 366-8844

ADVERTIZING RATES

1 column inch (before reduction)..... \$ 1.75
1/8 page..... \$ 2.25
1/4 page..... \$ 4.50
1/2 page..... \$ 7.75
Full page..... \$15.00

Classified 7¢ per word, 10-word minimum

10% discount for repeats of identical copy in 3 or more Newsletter issues. No charge for display lay-out. Photo screening extra; rates based on individual job requirements.

For further information, write Newsletter editorial office, address shown on page 2, or call Editor, 703-256-3623

September 1974
Vol 4, No 9

全米盆栽大会

JULY 11-14 NATIONAL BONSAI CONVENTION '74

by JOHN HINDS

Professionalism and atmosphere most aptly describes the Bonsai Congress at Pasadena's ancient but lovely Huntington Sheraton Hotel. Built in 1907, its sense of quiet elegance and tranquility pervaded the Congress and set its tone.

The conclave revolved around the central patio, a Bermuda-grassed square surrounded by chic shops and entrances to hotel meeting halls. It was here the bonsai sellers held forth with trees, pots, stands, and viewing stones. Here, also, the 600 attendees congregated between sessions to look and buy, to chat, and to make new friends.

West Coast bonsai master John Naka was the super star, demonstrating twice, once for each half of the conferees. Alternate programs included styling of a California Juniper (*Juniperus californica*), a saikei by Melba Tucker, an Azalea by Khan Komai, and a slide show.

Few attendees could see everything, but no one seemed to mind. Trading conversation about missed and experienced events enlivened cocktail and dinner hours.

The Naka group plantings were magnificent. A four-man creation, the first effort totaled 23 trees; three large Junipers (*Juniperus chinensis foemina*), and the rest Chinese Elms (*Ulmus chinensis*). Three assistants aided with the pruning, wiring and styling.

John's second creation was on about the same scale, but with even bigger Junipers to work with. The tallest towered more than eight feet tall before John cut them down to size.

(see NBC..., page 6)

Potomac Bonsai Association

ANNAPOLIS BONSAI CLUB
BALTIMORE BONSAI CLUB
BROOKSIDE GARDENS BONSAI
NORTHERN VIRGINIA BONSAI SOCIETY

tree of the month

Privet

by CLIFF POTTBERG

What qualities do you seek in a plant that makes it supremely suitable for bonsai work? Among broad-leaved evergreens, the lowly Privet may satisfy all your desires.

A member of the Olive family, the Privet, genus *Ligustrum*, has a number of species that are much used for bonsai, including *L. japonicum*, *L. ibota*, and *L. obtusifolium*, all of which are used in Japan. Other good species of Privet most available in America include *L. vulgare* and *L. ovalifolium*. This last is the one most used for Privet hedges in this country, but its popularity for hedges is closely followed by the semi-evergreen *L. vulgare*.

Characteristics desirable for bonsai are extremely numerous. The leaves are opposite, generally small, and of a deep glossy green. All Privets are vigorously rapid growers and are easy to raise in most soils, so easy, in fact, that many gardeners consider it little better than a pernicious weed. Privet also roots easily (which also means transplants easily), and the root system is shallow with numerous large surface roots tending to develop. Large plants in old hedgerows often display large radial rootage, quite often developed enough to make the most experienced bonsai grower yearn to dig it

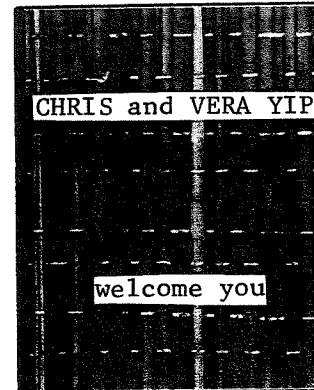
on the spot. Branches are relatively flexible and in many species are horizontal. The bark is usually not too rough, but not too damageable by wire either. In fact, although the tree is easily wired at any time of the year, *Ligustrum* also is one of the easiest plants to train by pruning alone.

Other good qualities include fruit that is tiny and looks somewhat like a miniature olive. The plants generally bud back easily from old wood, a fact which explains, along with their tolerance for shade, why they are so often used for sheared hedges. Its foliage can easily be made to look handsomely full and compact, a characteristic sought after for bonsai. In general, a good hedge species also makes good bonsai. *Ligustrum* is very tolerant of many growing conditions, including salt and the amount of water it receives.

Most *Ligustrum* are best suited to informal upright and multiple trunk or clump styles because of their habit of growth. But it also is fine for slanting style, and, because of its rooting habit for various root-on or root-over rock styles. These are the best styles to enjoy its flowers and fruit, but you may enjoy it for evergreen beauty alone when used for rafts, groves, and saikei.

Mites, especially aphids, will occasionally attack Privet, but are easily controlled with Malathion. Scales can be picked off or destroyed by a dormant oil used carefully.

Give Privet full sun as bonsai and be (see PRIVET..., page 4)



LOTUS IMPORT & EXPORT

PARKINGTON SHOPPING CENTER
4210 WILSON BOULEVARD
ARLINGTON, VIRGINIA 22203 USA

(703) 525-6171

BONSAI POTS • TRAYS • STANDS

10% discount to
PBA and affiliated club members

- jewelry
- jade
- silk
- chinaware
- antiques
- gift items
- other orientalia

Letter

Although the planting shown on the August Newsletter cover would make anyone proud to own it, I must admit it is not mine. I did have a rock planting in the PBA Show with Shimpaku Juniper and Dwarf Japanese Andromeda but the planting shown uses other varieties.

The cover shows a planting by Richard Meszler, member of PBA's Board and Past-President of the Baltimore Bonsai Club. It is a planting of Juniperus procumbens nana and Cotoneaster apiculata Tom Thumb on bog iron rock.

The confusion arose, I'm sure, because of many similar features in both plantings: both from Baltimore, both on bog iron, both with dwarf Juniper as the major tree planting, and both having very dwarf broad-leaved evergreen alongside.

Cliff Pottberg
(Editor's Note: Sorry about the mix-up, and my thanks to Cliff for the correction so that credit can be given where due.)

did you know...

"...it is necessary to trim the branches to roughly match the mass of the roots. Generally, the proportion of branches to roots is about six to four."

The Masters' Book of Bonsai

PRIVET... (from page 3)
prepared to prune it often. Your Privet bonsai will yield an abundance of easy-to-root cuttings with which you can increase your bonsai collection quickly, or for that matter, grow a fine hedge at the same time!



BONSAI INFORMATION GUILD, INCORPORATED

Post Office Box 6140 Shirlington Station Arlington, Virginia 22206 703-256-3384

"Your need is our service."

- Bonsai programs
- Individual/group Bonsai classes
- Vacation Bonsai care/boarding
- In-training Bonsai
- Bonsai stock plants
- Bonsai supplies

Industrial Member, Potomac Bonsai Association

... think **BIG**

BONSAI

BONSAI STOCK PLANTS
and
STARTED BONSAI

Juniperus squamata Parsoni

18"-36" spread

large twisted trunks
and branches

\$9.75 each

Club deliveries arranged

by appointment

ARTHUR R. COCHEL

12005 BLAKETON STREET
UPPER MARLBORO, MARYLAND 20870
PHONE: (AFTER 5 P.M.) 301/249-5687

Bonsai Auction Oct. 19

The Northern Virginia Bonsai Society announces its Second Annual Bonsai Auction will be held on Saturday, October 19 at Capper's Nursery from 1 - 6 p.m. As begun last year, proceeds of this yearly event will be split between the hosting club and the Potomac Bonsai Association. Jim Newton will again be the auctioneer.

NOVABONSOC members will provide a variety of materials for sale. Members of all PBA affiliate clubs are encouraged to donate or offer for consignment sale such items as trees, pots, stands, tools, and other materials relating to the growing and displaying of bonsai. Persons wish to offer materials may call Dave Flipse, 703-281-4524, for further information, and bring their materials to Capper's prior to the 1 p.m. starting time to have them recorded, minimum bids set, etc.

(see AUCTION..., page 8)

Third Baltimore Show

The Baltimore Bonsai Club will host its Third Annual Bonsai Show at Cylburn Park on Sunday, October 13, from 2 to 5 p.m.

Exhibitors from other PBA affiliates are invited to enter trees. Those interested in exhibiting should contact Cliff Pottberg at 301-472-2664. Display trees should be brought to Cylburn Park by 11 a.m. on the 13th.

There will be three classes of display trees: Invitational; Open, unjudged; and Open, judged. Non-BBC exhibitors may enter their trees in either of the Open classes.

Rock Collecting Trip

A PBA Rock Collecting Trip will be held on September 15 at the Arundel Corp. Sand Pit. A regularly scheduled fall PBA activity, the field trip is open to every member of all affiliate clubs.

Members desiring to participate will meet at Dave Brown's office, located at 8174 Ritchie Highway (Route 2) in Pasadena, Md. Directions are as follows:

From Baltimore: Take Beltway (I-695) to Ritchie Highway, South; go one-quarter mile past Jumper's Hole Rd.; on the right to Dave's.

From Washington-Annapolis: Take Route 50 (Washington residents reach Route 50 via Beltway, I-495) to Ritchie Highway, North; go one mile past West Pasadena Rd. on left, and make U-turn at Jumper's Hole Rd. to Dave's.

Bog iron and other rocks are here in abundance. Several species of trees are also located on the corporation's property, but the season will preclude much tree-taking.

東明 Sunny's

IMPORTERS OF ORIENTAL ARTS AND GIFTS

We have • bonsai pots • kenzans
• ikebana vases • mini garden sets
• flower pot hanger

specially priced only \$1.49 each

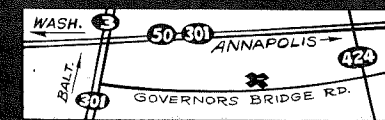
all PBA members 10% discount

FREE STATE MALL

15568 ANNAPOLIS ROAD
BOWIE, MARYLAND 20715
(301) 464-2208



Rt. 424 2 GOVERNORS BRIDGE RD.
DAVIDSONVILLE, MD.



8 a.m. - 6 p.m.

seven days a week

Phone (301) 798-0231

Dwarf Rhododendrons Japanese Maples, all sizes and varieties
Dwarf Pomegranate Cotoneasters Secondary Planting Materials
Dwarf Conifers Azaleas 13 varieties of Junipers
We now have seedling Bristlecone Pine, Small Pots & Bonsai Dishes
Japanese Black Pine for growing on - for Bonsai

Naka 5-Day School

There are still some openings for the John Naka Bonsai School being conducted in this area October 21 through 25. All classes will be held at the National Arboretum, with day sessions from 12:30 to 3:30 p.m. and evening sessions from 6:30 p.m. to 9:30 p.m. for all five days.

Each student must bring his own materials; none will be furnished.

Fee for the school is \$65 per student, based on the number of people now signed up. Should more make reservations to attend, the price, based exclusively on the costs of having the noted Naka as the teacher, will be lowered.

No one will be accepted for the school without prior payment of the entire fee or a \$15 deposit, either of which must be received by PBA Treasurer Molly Hersh by September 21. She may be reached at 102 Devon Court, Silver Spring, Md. 20910, or by phoning 301-589-3725.

SUPPORT OUR ADVERTISERS

NBC...

(from page 2)

In other convention activities, James Barrett of Arcadia, CA was elected President of the Bonsai Clubs International, Dorothy Young of Keith Valley, PA, remains American Bonsai Society President.

Visitors from Tokyo included Donald Sanborn, of Sanbord Shopping Service, and Masakuni Kawasumi, head of the Masakuni Tool Co., maker of bonsai tools.

Several PBAers arrived two days before the Thursday start of the Congress. They

Yoshimura Classes Set

Yuji Yoshimura has announced his fall 1974 schedule of classes. The all-day sessions are held on Tuesdays and Thursdays at the Yoshimura Bonsai Co., Inc., 514 Scarborough Rd., Briarcliff Manor, N. Y. Tuesday classes, held from 10 a.m. to Noon and 1 to 5 p.m. are scheduled for September 10, 17, and 24, and October 1, 8, 15, 22, and 29. Thursday classes, at the same time periods, are set for September 12, 19, and 26; October 3, 10, 17, 24, and 31; and November 7 and 14.

The fee is \$32.50 per person per lesson with students providing their own materials. Ornamental sand, limited soil, and moss are included in the fee.

Any number of lessons may be reserved, but reservations must be in writing and received by Mr. Yoshimura one week prior to class date, and must be accompanied by a 30% deposit, not refundable. Classes are limited to 12 students. For further information write to the address above, or call Yoshimura Bonsai Co. at 914-762-2717.

included Dave Brown and Joyce Pelletier of the Annapolis Bonsai Club; Cliff Pottberg of the Baltimore Bonsai Club; and Brookside Gardens Bonsai members Ann Edwards, Jo Finneyfrock, Molly Hersh, John Hinds, Milton Kidd, and Mr. and Mrs. Walter Schmidt. The Schmidts continued on to Tokyo and Hong Kong following the end of the Congress. Molly and Jo flew to Hawaii for a visit with friends and relatives, and more bonsai visits there.

Ginza

THINGS JAPANESE

- bonsai books
- bonsai stands
- bonsai pots

1006 20th Street, NW (near K Street)
Washington, D.C. 20036
telephone 202-331-7991

TANE S. YOSHIDA
will be pleased to serve
PBA members at her shop

- oriental gifts •
- Japanese dolls - kimonos
- new zori sox - laquer
- lacquer ware - brushes
- happi coats - jewelry
- parasols - fans
- chinaware - zori
- tabi

Affiliate Club Activities Schedule

ANNAPOLIS BONSAI CLUB - Main Library, West St., Annapolis, 2d Friday, 7:30 p.m.
BALTIMORE BONSAI CLUB - Cylburn Park Mansion, Baltimore, 3d Saturday, 3 p.m.
BROOKSIDE GARDENS BONSAI - Brookside Nature Center, Wheaton, Md., 3d Friday, 7:30 p.m.
NORTHERN VIRGINIA BONSAI SOCIETY - Gulf Branch Nature Center, Arlington, Va., 2d Saturday, 10 a.m.

September

13	ABC: Beginning Workshop conducted by Bill Craig; 6:30-10 p.m.
14	NOVABONSOC: Care and Use of Bonsai Tools, by Bill Merritt, including sharpening cutters
15	BBC: Rock Collecting Trip (see below) takes place of regular meeting PBA (All Clubs): Rock Collecting Trip, Arundel Corp. Sand Pit; meet 1 p.m. at Dave Brown's, 8174 Ritchie Hwy (Rte 2), Pasadena, Md. (see page 5 for directions)
20	BGB: Beginners Workshop; bring own stock and pot, or buy at meeting (NOTE: held Brookside Nature Center; erroneously reported last month as being held at National Arboretum)

October

	ABC: All-Day Workshop at Dave Brown's office, Oct 12
	NOVABONSOC: Second Annual Bonsai Auction; see page 5 for date and details
12	NOVABONSOC: Tree Grooming Session, conducted by Ruth Lamanna, Bob Roland; to get trees in shape for PBA Spring Show; bring potential Show trees for advice and assistance
13	BBC: Third Annual Baltimore Fall Show, Cylburn Park, 2 - 5 p.m. (see page 5)
18	BGB: John Naka Demonstration (see below) takes place of regular meeting
26	PBA (All Clubs): John Naka Demonstration; free to affiliate club members; National Arboretum Auditorium, 1 p.m.
27	BGB-NOVABONSOC: John Naka Workshop for both beginners, intermediate students; fee \$15, observers \$3; make reservations with Ann Edwards (BGB), and Dave Flipse (NOVABONSOC); National Arboretum; times announced when reservations made

Croton Hill Farms, Inc.

call 301-472-2664 for an appointment
with Cliff Pottberg

many large and small materials for bonsai
Balducypress
Quinces
Azaleas
Shimpaku and other Japanese trees

and: classes in bonsai: \$7.50/hr
\$35/person - 6 hr. lesson
individual classes tailored to your needs and desires
\$15/additional person up to 5
form a group and select your area of greatest interest