

Pronouncing Guide

TRUMPET HONEYSUCKLE

Lonicera sempervirens - lon-ih-sair'-ah sem-per-vie'-renz

NORWAY SPRUCE

Picea abies - pie-see'-ah ay'-beez

JAPANESE ANDROMEDA

Pieris japonica - pie-ear'-ihs jap-on'-ih-ka

COTONEASTER

Cotoneaster congesta - coh-tone-ee-as'-tuhr kon-jest'-ah

HACKBERRY

Celtis occidentalis - sell'-tiss ox-ih-den-tahl'-iss

CANADIAN HEMLOCK

Tsuga canadensis - sue'-gah can-a-den'-sis

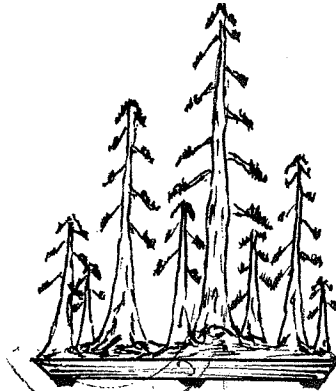
SOUTHERN BAYBERRY

Myrica cerifera - meer'-ih-ka sir-if'-ir-ah

SUPPORT OUR ADVERTISERS

Bonsai Doodles

Many people have a penchant for doodling as they think. Bonsai nuts are no different. BONSAI DOODLES presents some examples. Yours will be welcome. Send to Newsletter editor - address is on page 2. Send yours today!



-John Hreha

Naka School Set

PBA affiliate club members who want to undertake a full week's study with bonsai master John Naka will have their chance in October.

Arrangements have been made for John to teach a from-start-to-finish course from Oct. 21 through 25. One session, starting at 6 p.m., is already fully subscribed by those who initially indicated a desire for such a course. Day classes may be conducted if enough PBAers sign up. To do so, contact Peter Abresch, 301-535-0679, or John Hinds, 301-292-2914.

Course fee will be between \$50 and \$75, depending upon firming details concerning the number and varieties of trees to be worked and other administrative costs. A \$15 deposit will be required before your reservation for space can be considered settled.

All classes will be held at the National Arboretum. These week-long sessions precede the PBA-sponsored demonstration and one-session workshop to be held on Oct. 26 and 27 (see story, page 5).



Potomac Bonsai Association

c/o National Arboretum
24th & R Streets, NE
Washington, D.C. 20018



TO:

MILTON R. KIDD •
18010 Elgin Road
Poolesville, Maryland 20837

FIRST CLASS

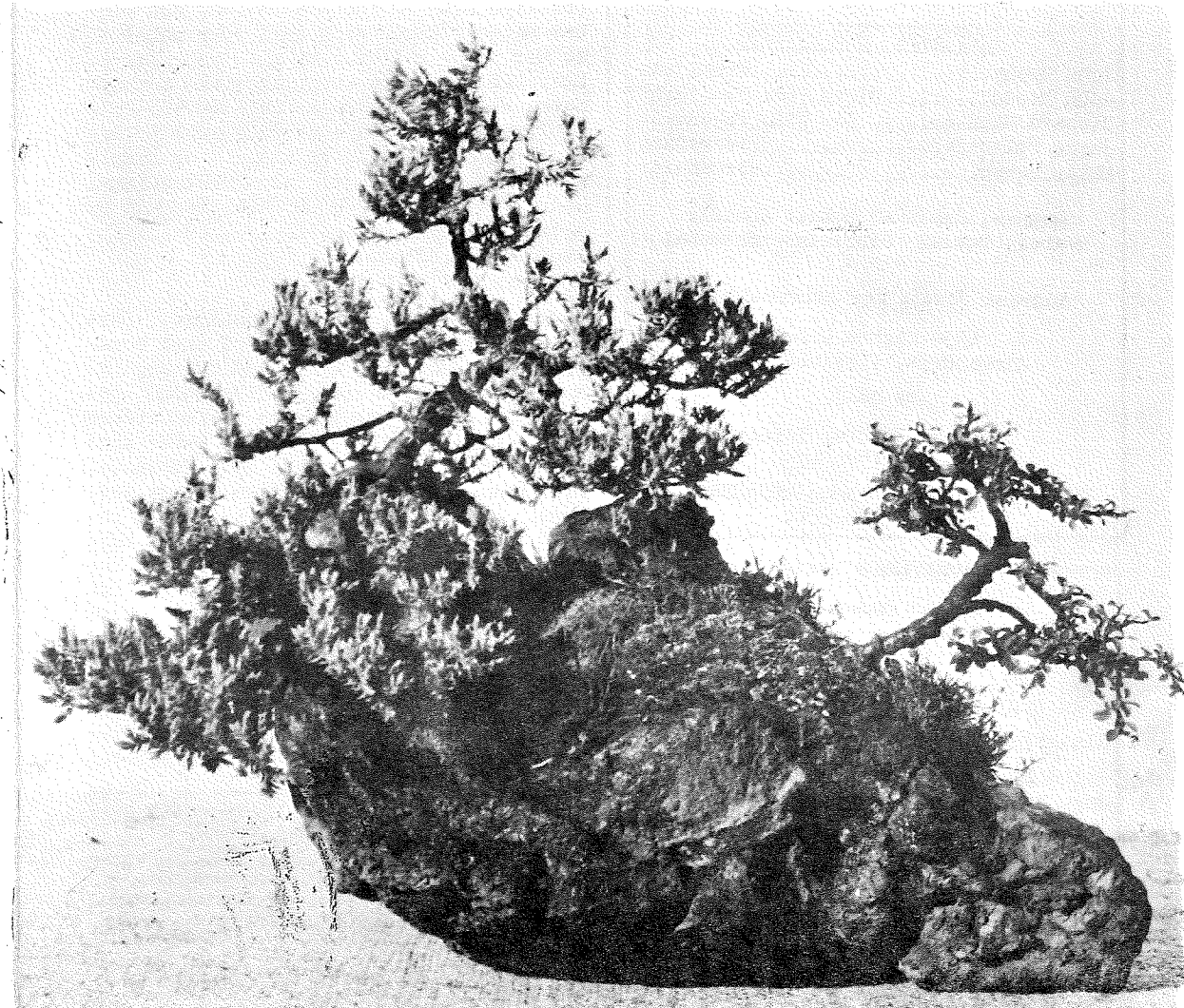


POTOMAC
BONSAI
ASSOCIATION

Newsletter

Vol. 4, No. 8

August 1974



POTOMAC BONSAI ASSOCIATION



Newsletter

Published solely in the interests of the POTOMAC BONSAI ASSOCIATION, a non-profit organization, and its affiliate member clubs and societies, under the authority of its Board of Directors.

POTOMAC BONSAI ASSOCIATION

c/o National Arboretum
24th & R Streets, NE
Washington, D.C. 20018

Officers for 1974-75

John Hreha.....President
John Hinds.....First Vice-President
Richard Meszler.....Ed. Vice President
Joyce Pelletier.....Secretary
Molly Hersh.....Treasurer

Member, American Bonsai Society
Member, Bonsai Clubs International
* * *

Address Newsletter submissions to

6394 Eighth Circle
Alexandria, Virginia 22312

or call

JAMES R. NEWTON, Editor
(703) 256-3623

CLIFTON POTTBERG, Education Editor
(301) 366-8844

ADVERTISING RATES

1 column inch (before reduction)..... \$ 1.75
1/8 page..... \$ 2.25
1/4 page..... \$ 4.50
1/2 page..... \$ 7.75
Full page..... \$15.00

Classified 7¢ per word, 10-word minimum

10% discount for repeats of identical copy in 3 or more Newsletter issues. No charge for display lay-out. Photo screening extra; rates based on individual job requirements.

For further information, write Newsletter editorial office, address shown on page 2, or call Editor, 703-256-3623

president's message

Donations Help

I want to start off this month with a thank you to one of our members - Art Cochel - for his part in offering to help PBA. Art has quite a selection of bonsai material (see his ad, page 7 this issue). For any bonsai material purchased from Art by any PBA-affiliated club member, he will donate 20% of the purchase price to the Association.

Thanks, Art!

Also, if you have any indoor bonsai (preferably small and in bonsai pots), that you wish to donate to PBA, BGB member Midge Edwards will sell your material at her shop and donate all proceeds to PBA. If you have such material to donate, please give me a call at 301-253-4167 and I will make arrangements to deliver the material to Midge, or simply bring it to one of the BGB meetings. Midge's shop is INTERIOR GARDENING and is located at 5221 Wisconsin Ave., NW, Washington, D.C. 20016.

Midge, you're a dear!

One more word about donations. Last year there were a number of cash donations by members to PBA, and one organizational donation (when NOVABONSOC donated half the proceeds of their October 1973 bonsai auction). Without these kind gifts we would have had some financial problems. Such donations are always welcome. Taking into consideration the recent prorata dues increase to PBA, this Newsletter is just barely financed by the share of dues from each member. PBA Treasurer Molly Hersh tells me the cost of the Newsletter has just risen again (the cost of paper has increased four times in the past six months, for example - Ed.). This situation means that PBA is in the "red" with the cost of the Newsletter alone. All other PBA activity must be financed by fund-raising. Donations should be sent to Molly; each will be acknowledged in the Newsletter.

I realize my message this month has touched entirely on money. Unfortunately organizations cannot be run without it. I ask for your support.

John Hreha, President

Vol. 4, No. 8 - August 1974

tree of the month

Carissa

by JIM NEWTON

As the art of bonsai increases in popularity, more and more people, particularly apartment dwellers, seek specimens suitable for indoor growing. One of the most suitable and successful plants for this purpose is Natal Plum (*Carissa grandiflora*, especially the dwarf form *C. g. nana*).



Classed as broad-leaved evergreen, Carissa has small, deep green leaves, generally well in proportion to the size of the plant. Flowers are star-shaped, white, and fragrant. Fruiting is known on bonsai, but must be helped if there are no insects to provide the pollenization while in flower.

Gnarled, twisted trunk and branches at an early age are characteristic of Carissa, and one of the reasons it is such a suitable bonsai subject, indoor or out. It prunes well and, although it exudes a milky fluid from fresh cuts, it heals rapidly with quickly disappearing scars. Both trunk and branches take wiring quite readily, although tender new growth must be delicately handled. A full growing season's hardening off will result in more or less permanent retention of the

shaped, white, and fragrant. Fruiting is known on bonsai, but must be helped if there are no insects to provide the pollenization while in flower. Gnarled, twisted trunk and branches at an early age are characteristic of Carissa, and one of the reasons it is such a suitable bonsai subject, indoor or out. It prunes well and, although it exudes a milky fluid from fresh cuts, it heals rapidly with quickly disappearing scars. Both trunk and branches take wiring quite readily, although tender new growth must be delicately handled. A full growing season's hardening off will result in more or less permanent retention of the


wired shape. New growth buds easily from green wood, infrequently from the previous year's growth.

Carissa does well in any good soil mixture, best is soil with some humus content. It likes moist, not wet, feet. Watering should be aimed at maintaining an evenly moist condition. With good drainage, this means daily watering indoors, perhaps as many as two or three in dry outside conditions. Placing the tree on a bed of wet gravel or sand helps cut down frequency of watering, but don't let soil dry completely out in any case. Because of the relatively broad surface area, leaves waterspot easily. An occasional wiping may be necessary to remove unsightly residual crystals.

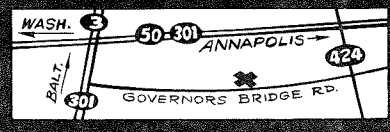
Full morning sun is best. Direct hot sunlight can scorch leaves. With careful attention to local conditions, you'll soon learn the optimum place for your Carissa to be placed. Always remain aware of changing climatic conditions that might alter the plant's requirements.

Red spider mites find Carissa a grand host under some conditions. Stagnant air invites them in, so take care not to put your indoor Carissa bonsai in a corner or closed area where circulation is poor. If the pests try to get a foothold, change the tree's location (not into a direct draft, please) after subjecting it to a moderately forcible stream of plain water. Frequent spraying will prevent the mites from getting a foothold.

Green cuttings root readily, require little special attention. Root in sterile, well drained medium. Roots should develop in two or three weeks, when the (see *CARISSA...*, page 7)



Bittersweet Hill
NURSERIES
Rt. 424 2 GOVERNORS BRIDGE RD
DAVIDSONVILLE, MD.



WASH. E 50-80 ANNAPOLIS
BALT. 301 GOVERNORS BRIDGE RD. 424

8 a.m. - 6 p.m.
seven days a week
Phone (301) 798-0231

Dwarf Rhododendrons Japanese Maples, all sizes and varieties
Dwarf Pomegranate Cotoneasters Secondary Planting Materials
Dwarf Conifers Azaleas 13 varieties of Junipers

We now have seedling Bristlecone Pine, Small Pots & Bonsai Dishes
Japanese Black Pine for greening on - for Bonsai

Identification Keys

COLOR DESIGNATIONS - PART 1

<u>albus</u>	-----	white
<u>argenteus</u>	-----	silver
<u>aureus</u>	-----	golden
<u>azureus</u>	-----	sky blue
<u>caeruleus</u>	-----	dark blue
<u>candicans</u>	-----	white
<u>candidus</u>	-----	pure white
<u>chromus</u>	-----	color
<u>chryseus</u>	-----	yellow
<u>citrinus</u>	-----	lemon yellow
<u>coccineus</u>	-----	scarlet
<u>coelestinus</u>	-----	sky blue
<u>croceus</u>	-----	saffron
<u>cyanus</u>	-----	blue

(Next: Color Designations - Part 2)

Note: Portions underlined are letters or syllables carrying the real key meanings (the roots); endings may change, but the root meanings do not.

the cover

ROCK PLANTING by Cliff Pottberg, PBA Past-President, displayed at Third Annual PBA Bonsai Show in April this year, consists of Chinese Juniper (*Juniperus chinensis shimpaku*) on left and Japanese Andromeda (*Pieris japonica pygmaea*). Artful composition shows general rule of not mixing species can be done successfully with care. Feel like climbing the hill? (Photo by Suniewick)

support our advertisers



BONSAI INFORMATION GUILD, INCORPORATED

Post Office Box 6140 Shirlington Station Arlington, Virginia 22206 703-256-3384

"Your need is our service."

- Bonsai programs
- Individual/group Bonsai classes
- Vacation Bonsai care/boarding
- In-training Bonsai
- Bonsai stock plants
- Bonsai supplies

Industrial Member, Potomac Bonsai Association

... think **BIG**



東明 Sunny's

IMPORTERS OF ORIENTAL ARTS AND GIFTS

- We have • bonsai pots • kenzans
 - ikebana vases • mini garden sets
 - flower pot hanger
- specially priced only \$1.49 each

all PBA members 10% discount

FREE STATE MALL 15568 ANNAPOLIS ROAD BOWIE, MARYLAND 20715 (301) 464-2208

BGB

Brookside Gardens Bonsai

(R) = Regular meetings, held at Brookside Nature Center, 1500 Glenallan Ave., Wheaton, Md., on the third Friday of each month, 7:30 p.m.

- Aug 16 (R) Brooklyn Botanic Garden film, "Bonsai;" slides and report on Pasadena National Bonsai Convention
- Sep 20 (R) Beginners Workshop; bring own stock and pot, or buy at meeting date), National Arboretum, 3 p.m.
- Oct 26 John Naka Demonstration (takes place of regular third-Friday meeting date), Brookside Nature Center, 7:30 p.m.
- Oct 27 Workshop conducted by John Naka for both beginners and intermediate level students; fee \$15 on first-come-first-served basis, limit 10 students; at National Arboretum; make reservations early (see story on this page)

Naka For October

BGB and NOVABONSOC members are reminded to start making plans to attend the John Naka workshop set for October 27 after a PBA-sponsored demonstration on the 26th.

Reservations may be made at any time with Ann Edwards (BGB) 6312 Winston Dr., Bethesda, Md. 20034, and with Dave Flipse (NOVABONSOC) 10400 Trumpeter Ct., Vienna, Va. 22180. The \$15 fee must accompany the request for reservation to the workshop. Observers need not make reservations, but will be required to pay \$3 at the door. John's limit is 10 students per workshop, so indicate your preference for morning or afternoon session when requesting a reservation.

Both beginners and more advanced students will be accepted for workshops, with beginners grouped together for ease in teaching. Each student must provide one tree to style and may bring one other tree for advice - no more will be permitted.

As in past Naka visits, the demonstration will be held at the Brookside Nature Center and the workshops at the National Arboretum.

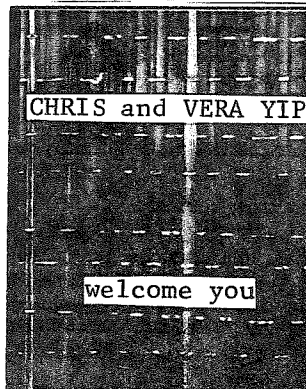
Coming...

The visiting bonsai expert for the PBA spring schedule will be Marion Gyllenswan of the Bonsai Society of Greater New York and teacher under PBA Honorary Member Yuji Yoshimura. The date of her visit will be announced when confirmed.

PBA

Potomac
Bonsai Association

- Sept 15 Rock Collecting Trip, Arundel Sand Pit, Md.; details to be announced
- Oct 26 John Naka Demonstration; free to all affiliate club members; National Arboretum Auditorium, 3 p.m.



LOTUS IMPORT & EXPORT

PARKINGTON SHOPPING CENTER
4210 WILSON BOULEVARD
ARLINGTON, VIRGINIA 22203 USA

(703) 525-6171

BONSAI POTS • TRAYS • STANDS

10% discount to
PBA and affiliated club members

- jewelry
- jade
- silk
- chinaware
- antiques
- gift items
- other orientalia

NOVABONSOC

Northern Virginia

(R) = Regular meetings, held at the Gulf Branch Nature Center, 3608 Military Rd., Arlington, Va., (Note change of time and day of meetings, which will be on the second Saturday of each month at 10 a.m.)

Aug 10	(R) Slide Presentation on Longwood Gardens Collection, Allan Thompson, formerly with Longwood, now of Brookside Gardens; Report on Bonsai Congress just completed in Pasadena; problem tree session (bring your own)
Sept 14	(R) Care and Use of Bonsai Tools, Bill Merritt, including sharpening cutters
Oct 12	(R) Tree Grooming Session, conducted by Ruth Lamanna and Bob Roland; designed to get trees in shape for Spring PBA Show; bring potential Show trees for advice and assistance
Oct 26-27	John Naka Demonstration (sponsored by PBA) and Workshop (in conjunction with BGB); demonstration free, workshop fee is \$15 (or \$3 to observe only); make your reservation early by calling Dave Flipse (see pg. 5)
October	(Date & place to be announced) Field Trip

PBA Donors

Mrs. M. E. Hayes	\$4.40
John Hreha	\$5.00



Croton Hill Farms, Inc.

call 301-472-2664 for an appointment with Cliff Pottberg

many large and small materials for bonsai
 Baldcypress
 Quinces
 Azaleas
 Shimpaku and other Japanese trees

and: classes in bonsai: \$7.50/hr \$35/person - 6 hr. lesson individual classes tailored to your needs and desires \$15/additional person up to 5 form a group and select your area of greatest interest

ABC

Annapolis

(R) = Regular meetings, held at the Main Library, West St., Annapolis (downtown), the second Friday of every month at 7:30 p.m. Sites of other meetings specified below.

Aug 9	(R) Program on Highlights of National Convention '74 in Pasadena, Calif.
Sept 13	(R) Fall Planting Workshop with emphasis on preparing trees for Spring PBA Show

BBC

Baltimore

(R) = Regular meetings, held at Cylburn Park Mansion, Cylburn Park, Baltimore, at 3 p. m.

Aug 18	(R) Program on Highlights of National Convention '74, with slides of show trees and other points of interest
Sept 15	PBA-sponsored Rock Collecting Trip, Arundel Sand Pit
Sept 21	(R) To be announced

did you know...

A man had a nice planting of Pernettyas which never bore berries. One day a stray cat had her kittens in the planting. Thereafter the Pernettyas had loads of berries. Why? The answer is simple. The cat caught the mice that had been eating the berries. Mice can prevent heavy fruiting on bonsai as well. But for bonsai, cats are not the answer!

SPECIAL STOCK PLANT SALE

BLUE MOSS CYPRESS / 7-10" high..	3.50 ea
BLUE (Faith Bush) CYPRESS / 12-18" high, excellent buy.....	5.50 ea
DWARF GOLDEN CYPRESS / 7 - 10" high, a beautiful tree.....	3.75 ea
CASCADE JUNIPER (Wiltoni) / in 2 gal. container.....	5.25 ea
KOUSA DOGWOOD / 2 years old, in 5 x 8" flat.....	1.75 ea
JAPANESE MAPLE / 2 years old, in 5 x 8" flat.....	1.75 ea
JAPANESE BLACK PINE / 4 - 6 years old	2.50 ea
SATSUKI AZALEA / from 2 - 10 years old	1.50 to 25.00 ea

Club deliveries arranged

Send me your WANT LIST for availability and price. We try to provide quality at modest prices

ARTHUR R. COCHEL

12005 Blaketon Street
 Upper Marlboro, Maryland 20870
 301-249-5687

BONSAI
 - Consumer Corner

FULL CIRCLE

112 King Street Alexandria, Virginia
 Reported by JIM NEWTON

Upstairs and across an open landing brings one to this small shop displaying "distinctive Far East imports and fine handcrafts." Included in their wares are reasonably priced (by current standards) small and medium sized unglazed stoneware bonsai pots. Also on hand when I visited in early July were several small Kingsville Boxwood (*Buxus microphylla compacta nana Kingsville*) bonsai on consignment sale for NOVABONSOC member Bob Roland.

Although their selection of stock is somewhat small, the future promises to be brighter. Owner-operator Majorie Hemmendinger says her buyer will soon be in Japan to scout for and but new stocks. She expects to carry, if plans gel, some shallow bonsai trays and bonsai books.

Mention your PBA affiliation when visiting this charming shop.

CARISSA...

(Continued from page 3)

cutting can be transferred to a training pot.

Although some bonsai growers will say the Carissa is not really a tree and so can never qualify as a true bonsai, the satisfaction of growing this charming plant far outweighs the academic controversy of what constitutes a bonsai.

Ginza THINGS JAPANESE

TANE S. YOSHIDA

will be pleased to serve

PBA members at her shop

• bonsai books

• bonsai stands

• bonsai pots

• **oriental gifts** •

- Japanese dolls
- kimonos
- new zori sox
- lacquer
- lacquer ware
- brushes
- happi coats
- jewelry
- parasols
- fans
- chinaware
- zori
- tabi

1006 20th Street, NW (near K Street)
 Washington, D.C. 20036
 telephone 202-331-7991