



**HM-M-M...**

...is the only sound as Chase Rosade, visiting bonsai professional from New Hope, Pa., contemplates the large White Pine (*Pinus strobus nana*) he styled for Northern Virginia Bonsai Society members Feb. 13. Result is pictured on the front page. (Photos by Newton)



**HELP...**

...is what Chase Rosade got in styling a *Pinus strobus nana* for NOVABONSOC on Feb 13. (Left) PBA's Educational VP John Hreha helps reduce root ball prior to potting. (Right, from L to R) Bill Craig, PBA Librarian; Bob Roland; NOVABONSOC; Dottie Warren, PBA; and Joyce Pelletier, ABC all help in the wiring details.

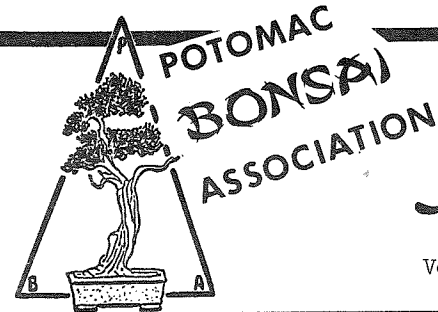
**WE NEED...** (Continued from page 2)  
This year we intend to conduct the Business Meeting in conjunction with the April meeting of the BGB, which is on the third Friday of April, the old PBA meeting date. Some other arrangement may be better for next year. We need you to help with the decision.

Fourth, your PBA Constitution is being broadened to take into account its reversion to strictly association status. Changes you need to vote on include membership, dues, and several small details. Each Club President will receive a copy of the proposed changes from Constitution Committee Chairman Pete Abresch in the next few days. The President should read the changes to his members at their next meeting so that all can be prepared to exercise his right to vote at the Annual PBA Business Meeting on April 19.

Finally, there is the general need to know what your desires are. The Association exists to serve you. What do you and your Club need that PBA can supply or assist you to obtain? We can only serve you as well as you make your needs known. Talk to your group's PBA Director. If you don't know who he is, ask your Club President. Call any of PBA's Board of Directors or officers directly; we're all eager to listen.

Cliff Pottberg  
President  
PBA

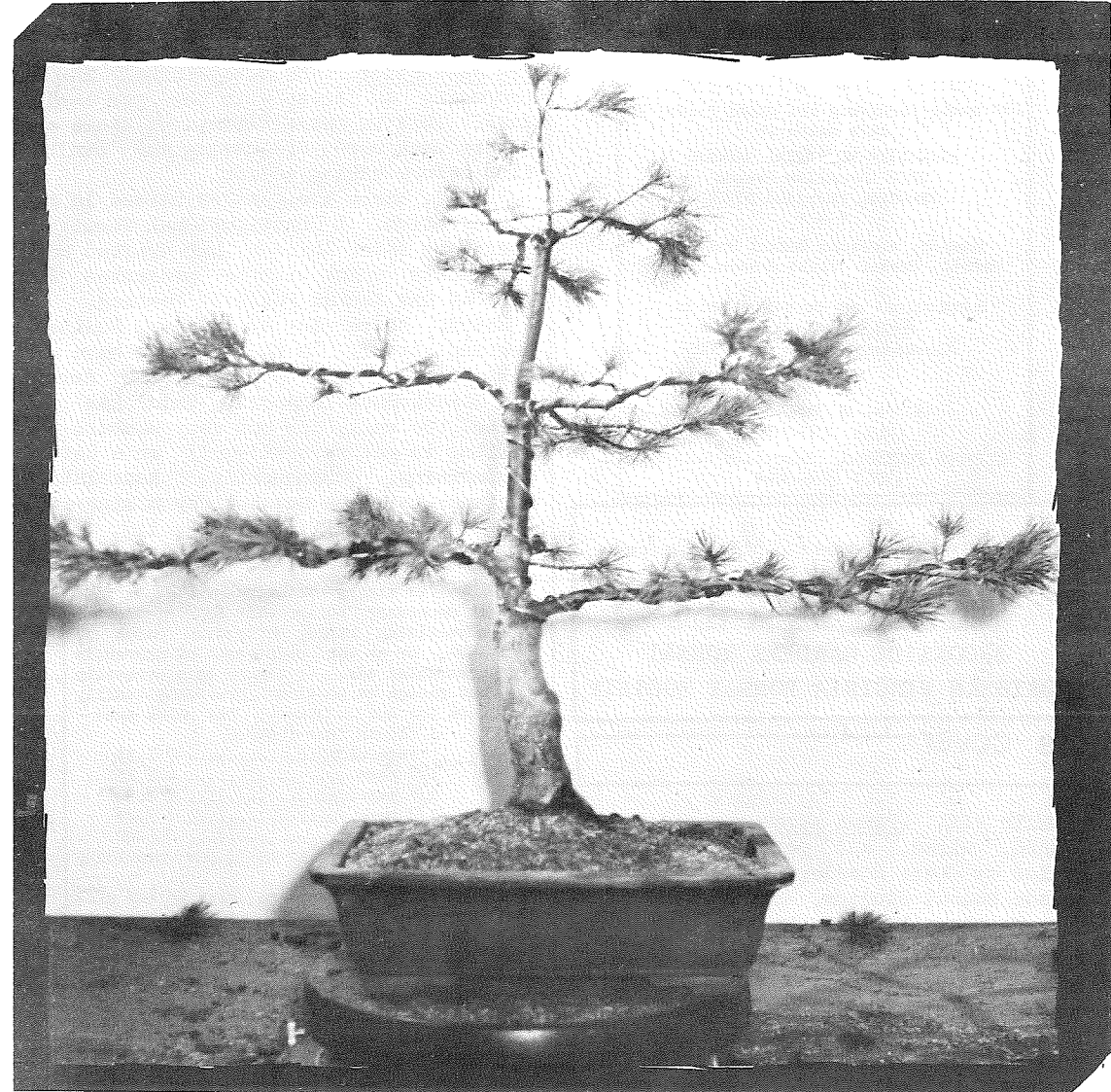
*support our advertisers*



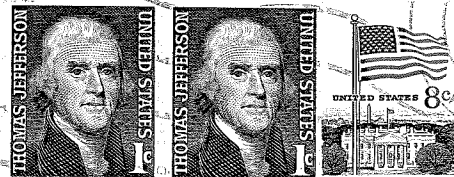
# Newsletter

Volume 4 Number 3

March 1974



**Potomac Bonsai Association**  
c/o Brookside Botanical Gardens  
1500 Glenallen Avenue  
Wheaton, Maryland 20902




TO:

MILTON R. KIDD  
18010 Elgin Road  
Poolesville, Maryland 20837

**/FIRST CLASS/**

POTOMAC BONSAI ASSOCIATION



# Newsletter

Vol 4, No 3 March 1974

Published solely in the interests of the POTOMAC BONSAI ASSOCIATION, a non-profit organization, and its affiliate member clubs and societies, under the authority of its Board of Directors.

Officers for 1973-74

Cliff Pottberg.....President  
 Milton Kidd.....First Vice-President  
 John Hreha...Educational Vice-President  
 John Hinds.....Secretary  
 Molly Hersh.....Treasurer

\* \* \*

PBA meets regularly the third Friday of each month at

BROOKSIDE BOTANICAL GARDENS  
 1500 Glenallen Avenue  
 Wheaton, Maryland 20902

\* \* \*

Member, American Bonsai Society  
 Member, Bonsai Clubs International

\* \* \*

Submissions may be addressed to  
 6394 Eighth Circle  
 Alexandria, Virginia 22312  
 or call

JAMES R. NEWTON, Editor  
 (703) 256-3623

CLIFTON POTTEBERG, Education Editor  
 (301) 366-8844

*Potomac Bonsai Association*

ANNAPOLIS BONSAI CLUB  
 BALTIMORE BONSAI CLUB  
 BROOKSIDE GARDENS BONSAI  
 NORTHERN VIRGINIA BONSAI SOCIETY

**the cover**

WHITE PINE (*Pinus strobus nana*) stands pruned, wired, and potted after being styled by Chase Rosade, owner-operator of Rosade Bonsai Studios, New Hope, Pa., for the Northern Virginia Bonsai Society on Feb. 13. The demonstration was witnessed by members of other PBA clubs as well as hosts. This was a valuable lesson in how to handle styling of Pines, which often grow branches in unsightly whorls. (More pictures on page 12) (Photo by Newton)

president's message

## We Need You!

Now that the Brookside Gardens Bonsai has been established as an organization separate from the Potomac Bonsai Association (see story page 5), your Association can begin to concentrate its energy in development of programs and services to benefit all affiliate clubs and their members. There are problems to be resolved yet, but with everyone's cooperation, none are insoluble.

First, there is money to support your PBA Newsletter. The newly-formed BGB is proposing an increase in the per capita dues. This is one alternative; there are others that need discussing and evaluation before taking action.

Second, there are changes needed in the Constitution. A Constitutional Committee headed by Peter Abresch has drafted some amendments which will be presented for vote at the Annual Business Meeting.

Third, there is the Annual Business Meeting itself. In the past, we have met just prior to the opening of the Annual PBA Bonsai Show in April. This has not worked too well, for not many members are willing to get up that early on a Saturday morning. Consequently, Association business has been enacted by a minority. (see WE NEED..., page 12)

**ADVERTIZING RATES**

Due to rising printing costs, we find it necessary to increase PBA Newsletter advertising rates, effective March 1, 1974, or at the completion of currently contracted ads. We regret this necessity but pledge to continue providing quality work for our customers. New rates are:

1 column inch (before reduction).....	\$ 1.75
1/3 page.....	\$ 2.25
1/4 page.....	\$ 4.50
1/2 page.....	\$ 7.75
Full page.....	\$15.00

Classified remains at 7¢ per word for a minimum of 10 words.

We will continue to offer a 10% discount for repeats of identical copy in three or more Newsletter issues, and still make no charge for display lay-out. Photo screening is extra; rates depend on the individual job desired.

For further information, write or call Advertising Director Tory Pottberg, 4412 Colmar Garden Dr., Baltimore, Md. 21211, 301-472-2664.

# BBC To Elect, Select Trees

The next meeting of the Baltimore Bonsai Club, on March 16, will be a combined program of business and tree selection for the PBA April Show.

Election of new members of the Board of Directors will be the main order of business. A slate will be presented by the Nominating Committee, who are: Tory Pottberg, Michele Hecht, and Kirk Cylus.

Selection of trees will be by a committee of three: Bill Craig, Cliff Pottberg, and a member yet to be named. Selection will take place while the business session is being conducted. Tree owners desiring to learn reasons for selection or rejection of his tree may talk with the Committee after the meeting.

Saikei, Suiseki, and secondary plant-

**BBC** Baltimore

(R) = Regular meetings, held at Cylburn Park Mansion, Cylburn Park, Baltimore, at 3 p. m.

Due to the current fuel crisis and nonavailability of gasoline on Sundays in the Baltimore area, BBC meetings have been moved to Saturdays.

Mar | BBC-sponsored trip to Philadel-  
 CANCELLED - see page 6 over Show; for  
 Cliff Pottberg,  
 301-366-8844

Mar 16 | (R) Lecture on Mosses; Club Sales Corner, with mosses for sale; Tree-of-Month discussion: San Jose Juniper; bring trees you wish to enter in PBA Show selection of Show trees will be made

Apr 20 | (R) All-Day Spring Tree Workshop at BBC President's home; sandwiches and beer provided - this is opportunity to work on Show trees; for further info, call Richard Meszler at 301-833-9559

Apr 27-28 | Third Annual PBA Bonsai Show, National Arboretum Auditorium, 24th & R Sts., NE, Washington, D.C., 10 a.m. - 6 p.m.

ings are welcome as entrants. New members from the now-defunct Maryland Bonsai Society are urged to enter trees.

## All-Day Workshop

The all-day workshop scheduled at the home of BBC President Richard Meszler on Saturday, April 20, will be a come-when-you-like, stay-as-long-as-you-like session. Coffee will be served all during the 10 a.m. to 6 p.m. period, and beer, milk, and light sandwiches will be provided for lunch, or bring your own if you prefer.

Richard and the Club's Educational VP Cliff Pottberg will be on hand all day to assist any member with individual tree problems.

Designed primarily to provide the opportunity for BBC members to work on the trees selected for the PBA Spring Show, other PBA members are welcome to come and join the work-fun "thing."

To reach the Meszler home, take the Baltimore Beltway (I-695) to Reisterstown Rd.; go north to Cherry Hill Rd (just after the Jo Ann Fabric Shop); turn right 2 blocks to Lindellen Ave.; turn left onto Conewood Ave. to number 211, on right.

## Md. Society Defunct

The Maryland Bonsai Society, a group of bonsai hobbyists meeting in the Baltimore area for several years, has disbanded, it was learned recently. Because of problems associated with operating the group, disbandment was the only alternative. Dues were refunded.

The Baltimore Bonsai Club offered free memberships for the remainder of the BBC year to Society members. Except for voting rights, these are full memberships, and the new members may participate in other BBC activities and business. Each may, of course, assume full membership privileges upon payment of regular dues at the start of the new BBC operating year.

## 'Intro To Complete Bonsai' Course

The Potomac Bonsai Association has arranged with Croton Hill Farms to conduct an Introduction To Complete Bonsai course of instruction for affiliate clubs.

To be taught by Cliff Pottberg, owner-operator of Croton Hill Farms, the course will be of 10 weeks duration and will be held at the site selected by the club applying for the course. Any affiliate may apply to the PBA Educational Vice-President for a course starting date after May 1, 1974.

A minimum of 5 - to a maximum of 10 - students are required. The fee is \$45 per student payable to the Treasurer, PBA in advance. All course materials will be provided, including three trees, three bonsai pots, soil, wire, and expert instruction.

Course content will include basic mate-

### PBA TREASURER'S REPORT February 15, 1974

BALANCE ON HAND (Dec 21, 1973)	\$470.80
Bank statement error	+ .25
	<u>\$471.05</u>

### Receipts

Dues	\$46.00
Jewelry sale	4.95
Bonsai tools	22.60
	<u>\$73.55</u>

### Expenditures

Expenses (Newton)	\$53.77
Bonsai tools	22.60
	<u>\$76.37</u>

BALANCE ON HAND (Feb 15) \$468.23

Detailed accounting of PBA receipts and expenditures may be obtained from the Treasurer. Molly Hersh

rials, aesthetics, philosophy, horticulture, advanced techniques and styles, and workshop sessions in which course trees are discussed, wired, pruned, potted, and critiqued.

## Pottberg Teaching At Smithsonian

Potomac Bonsai Association President Cliff Pottberg has been signed to teach bonsai at the Smithsonian Institution in Washington.

The announcement states classes will begin on Wednesday, April 17, and continue for two hours each Wednesday for 10 weeks.

Limited in the number of students, all classes are fully subscribed, the Smithsonian educational office reports.

### PBA Potomac Bonsai Association

Now that Brookside Gardens Bonsai is established as a separate operating group PBA will hold only business meetings as called by the President or as authorized by the PBA Constitution. There are two scheduled over the next two months:

Apr 19	Annual PBA Business Meeting, Brookside Nature Center; more details next month
Apr 26-28	Third Annual PBA Bonsai Show, National Arboretum Auditorium, with set-up Friday, Show to run Saturday and Sunday

## 'Brookside Gardens Bonsai' Separates, Affiliates Select Directors, Pass Resolution

The latest club to affiliate with the Potomac Bonsai Association was created February 15. Nearly one - third of the current PBA membership met to select a name, adopt a constitution, and elect a Board of Directors.

Following consideration of some 14 suggested names, the final choice was:

### BROOKSIDE GARDENS BONSAI

Included in the organization's constitution is affiliation with PBA.

Directors elected for two-year terms:

John Hreha Molly Hersh  
John Hinds Milton Kidd

One-year term Directors:

Anne Edwards Mary Ishino  
Keith Kaneshiro

Also appointed were John Hreha to be BGB's member of the PBA Board of Directors, and Molly Hersh to be the group's delegate to Bonsai Clubs International.

Election of officers, which is done by the Board of Directors, will take place at the March meeting.

As their first item of business, the new Board presented the following reso-

### BGB Brookside Gardens Bonsai

(R) = Regular meetings, held at Brookside Nature Center, 1500 Glenallan Ave., Wheaton, Md., on the third Friday of each month, 7:30 p.m.

Mar 15	(R) Discussion of Pottery relating to making bonsai pots by Jerry Hovanek; members, bring trees you wish to enter in PBA Show; selection of Show trees will be made; election of officers
--------	---

Apr 19	(R) To be announced
--------	---------------------

Apr 27-28	Third Annual PBA Bonsai Show, National Arboretum Auditorium, 24th & R Sts., NE, Washington D. C., 10 a.m. - 6 p.m.
-----------	--

lution for a change to the PBA constitution. Publication of it in this month's Newsletter constitutes official notification of PBA membership, and insures it will be an item of business at the PBA Annual Business Meeting.

### RESOLUTION OF AMENDMENT TO THE CONSTITUTION OF THE POTOMAC BONSAI ASSOCIATION

WHEREAS, with the formation of Brookside Gardens Bonsai, the Potomac Bonsai Association will revert to its originally intended status of an affiliation of bonsai clubs; and,

WHEREAS, the per capita dues remitted to PBA will be greatly curtailed due to formation of the BGB; and,

WHEREAS, the cost of the PBA Newsletter at the present time is \$4.97, including postage, per member per year, while the per capita dues remitted to PBA is presently set at \$2.00 per member per year; and,

WHEREAS, the continuance of the PBA Newsletter is desired by all members of BGB; and,

WHEREAS, this continuation can only be carried on if the income of the PBA is increased sufficiently; now therefore

BE IT RESOLVED that BGB offers an amendment to the PBA Constitution to increase the per capita dues to PBA to \$5.00 per member per year in order that the Newsletter can be continued; and

BE IT FINALLY RESOLVED that BGB calls on all member Clubs to support this amendment in order that the fine work of the Newsletter can be continued without financial distress.

ATTESTED this 15th day of February, nineteen hundred and seventy-four by Directors and Members of Brookside Gardens Bonsai in official meeting assembled at Brookside Nature Center, Wheaton, Md.

Old-wood pruning should be accomplished during the dormant season.

ORDER NOW FOR SPRING

## Croton Hill Farms

Reserve yours early

4412 Colmar Gardens Drive  
Baltimore, Maryland 21211  
telephone 301-472-2664\*



After another collecting trip to Florida, we now have several large Baldcypress and numerous other plants suitable for bonsai

also secondary plantings of many varieties

\*Old Customers, please note our new mailing address and telephone number

# NOVABONSOC Elects, Changes Meeting Day

In an action-filled program, the Northern Virginia Bonsai Society watched Chase Rosade, bonsai grower from New Hope, Pa., transform untouched nursery-grown White Pine (*Pinus strobus nana*) into a potted in-training bonsai. His presentation followed election of Society officers and announcement of a change in meeting time.

New officers elected are:

- Harry W. (Bill) Merritt, President
- David E. Flipse, Educational VP
- Floy Flipse, Treasurer

The first act of the new President was to present a token of Society appreciation to retiring President Jim Newton. The polished wooden display slab came as a complete surprise to Jim.

At the request of the Gulf Branch Nature Center, meeting time will be changed from the second Wednesday evening to the second Saturday morning, 10 a.m. to Noon. The switch is being made to minimize the need for Center personnel to make extra travel (by car) after hours for an evening meeting. Since the Center is open Saturdays regularly, no additional gas will be needed by Center personnel.

### NOVABONSOC TREASURER'S REPORT February 19, 1974

BALANCE ON HAND (February 1973) \$ 0.00

Receipts

Dues \$216.00  
Auction profit 130.47  
\$346.47

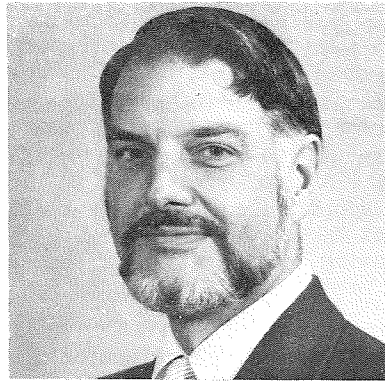
Expenditures

Checks & plate \$ 14.51  
Haruko Kawasoye (4/73 program) 10.00  
Film (8/73 program) 9.86  
PBA per capita dues 58.00  
Chase Rosade (2/74 program) 80.00  
\$172.37

BALANCE ON HAND (Feb. 19, 1974) \$174.10

Respectfully submitted  
Bernice Newland  
Treasurer

**SUPPORT OUR ADVERTISERS**



HARRY W. (BILL) MERRITT  
NOVABONSOC President

## NOVABONSOC Northern Virginia

(R) = Regular meetings, held at the Gulf Branch Nature Center, 3608 Military Rd., Arlington, Va., (Note change of time and day of meetings, which will be on the second Saturday of each month at 10 a.m.)

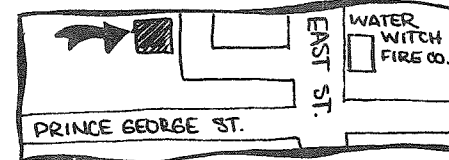
Mar 9	(R) Fundamentals of Propagating Plants at Home, talk by Mrs. Judy Shirley, Chief of Plant Propagation at National Arboretum, including seeding, cutting and grafting
Apr 13	(R) To be announced
Apr 27-28	Third Annual PBA Bonsai Show, National Arboretum Auditorium, 24th & R Sts., NE, Washington, D. C., 10 a.m. - 6 p.m.

## Philly Trip Dead

The tentatively planned trip to visit the Philadelphia Flower Show has been cancelled due to the increasing severity of the gasoline shortage. Anyone wishing to make the trip on an individual basis may contact Cliff Pottberg for a schedule of times suitable for viewing the bonsai exhibit sponsored by the Pennsylvania Society each year and directions on how to get to the Show site.

## ABC Annapolis

(R) = Regular meetings, held at William Paca House, 5 Martin St., Annapolis, Md., the third Thursday of the month at 7:30 p.m. Sites of other meetings specified below



Mar 9	Collecting Trip of Annapolis-Pasadena areas, led by Dave Brown; meet at Main Public Library, West St., at 10 a.m. (NOTE: this is change from previously announced Mar 2 trip)
Mar 21	(R) General Workshop, monitored by John Hreha, PBA Educational VP; bring trees you wish to enter in PBA Show; bring work materials; selections for Show will be made; meet Paca House, 6:30 p.m.
Apr 20	Tour of Annapolis area nurseries; meet at Main Library parking lot, 10 a.m.; no other meet this month
Apr 27-28	Third Annual PBA Bonsai Show, National Arboretum Auditorium, 24th & R Sts., NE, Washington, D. C., 10 a.m. - 6 p.m.
May 10	(R) To be announced (NOTE: the Chrysanthemum Bonsai demonstration previously announced will not be held)

## BGB Elects Officers

Brookside Gardens Bonsai officers were selected at the first meeting of the new organization's Board of Directors on Feb. 22. Chosen were:

- Molly Hersh.....President
- Milt Kidd.....Educational VP
- Mary Ishino.....Vice-President
- John Hinds.....Secretary
- Ann Edwards.....Treasurer

Other decisions reached at this Board business meeting include:

- Regular dues are \$10 single, plus \$2 for each additional member from the same household.
- Dues for students, senior citizens, and handicapped persons are \$5, plus the \$2 for each additional member from the same household.
- A \$25 fee is the dues for commercial or industrial membership.
- Secretary John Hinds was named as Bonsai Clubs International correspondent.
- Development of a new membership kit was announced. Samples will be available to see at the March meeting.

## Columbia Forming

Four residents of Columbia, Md., all members of PBA, met Feb. 21 at the home of PBA Librarian Bill Craig to discuss the feasibility of forming a bonsai club in that community. Beside Bill, the organizers were Dan Turner, Jim Oliver, and Phil Remsburg.

The group's decision was to hold off on more definitive planning until reaction of other Columbia residents can be ascertained. They are seeking to obtain space for a small bonsai exhibit in Columbia Mall during that area's usual Spring Exhibits Festival. The number of recruits will determine whether or not a bonsai club can be formed.

A further tentative meeting is set for either the fourth Tuesday or March or the second Tuesday of April.

"...It is better to nip an unwanted branch in the bud today than cut it with shears tomorrow...."

Claude Chidamian

remember HIM/HER

with a gift of

BONSAI JEWELRY

- cufflinks
- earrings \$4.95 - \$8.95
- tie tack
- pin



ALL PROCEEDS TO PBA

contact JIM NEWTON  
OXford 5-9662 (during the day)  
256-3623 (evenings and weekends)



## BOOK REVIEW

JAPANESE HOMES AND THEIR SURROUNDINGS  
by Edward S. Morse. Dover Publications,  
Inc., 1961. 372pp. \$3.00

Although this fascinating work first appeared in 1885, its contents are as germane today as when Mr. Morse recorded, in word and sketch, almost every aspect of the Japanese house. Made when Western influence had not yet infiltrated the fabric of Japanese life, his meticulous coverage of how the Japanese live is unequalled since.

A trained scientist, Morse used carefully trained analytical faculties to delineate construction of houses and to describe furnishings, appurtenances, gardens, and other subjects related to the house. In an age when photography was not the ready recording tool it is today, Morse recorded what he saw in sketches. There are 307 sketches in the book.

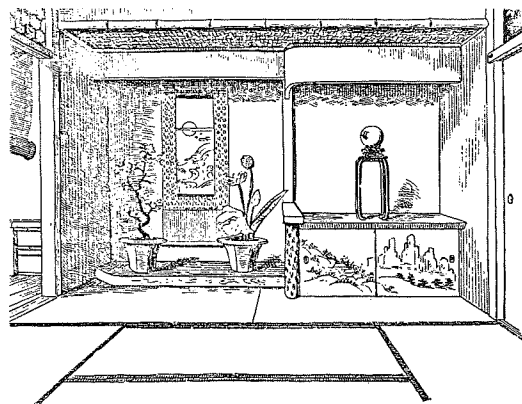


FIG. 127. — GUEST-ROOM OF DWELLING IN TOKIO.

While bonsai is not mentioned in the text, and appears only in one sketch (Figure 127, pg. 146, in the section on the tokonoma, and reproduced here), the wealth of descriptive matter adds immeasurably to a cultural understanding of the people who brought bonsai to its present artistic fulfillment.

Nine chapters cover interiors, entrances and approaches, gardens, miscellaneous matters, the ancient house, and the neighboring house. There is a quite extensive glossary and a well annotated index. The physical layout has a continu-

ity that, combined with Morse's attention to detail, results in a reference work reading easily and smoothly. There are no "dead spots" of esoteric language or overwhelming statistics. One can forgive Morse's occasional relapse into exposition of his personal philosophy (it puts a distressingly accurate finger on some of the social ills of the 1800s that have spilled over into our own day).

The attentive reader will find himself absorbing a great wealth of understanding about the milieu in which bonsai developed and continues to flourish. Morse's observations perhaps add historical flavoring -- after all, he wrote about the Japan of the late 19th Century -- which psychologically readies the reader's awareness receptors. There are a number of triggers scattered throughout this fascinating account which keep the reader aware of the time frame. For example, note the archaic spelling of Tokio (see the accompanying sketch) and Kioto in contrast to our more familiar Tokyo and Kyoto; these appear time after time. Also, at one spot in his narrative Morse mentions the U. S. population as being 55 million; what changes time has wrought on that score!

Yet throughout the book there is an aura of authenticity that time cannot change. Although modern Japan is not immune from the ills besetting the rest of the modern world, there is perhaps more of their cultural heritage remaining in the fabric of their society (bonsai, for instance) than we Americans can boast for ours. Morse described a world whose essential elements are still immured in the Japanese art of bonsai.

Now, after nearly nine decades, Morse's observations are still valid and provide an insight for the occidental into the oriental culture that put the finishing touches to the art of bonsai. For we occidental bonsaiists of the 20th Century, that is a lasting value Edward Morse has passed on.

(NOTE: Japanese Homes and Their Surroundings is one of many books available to BCI members through that organization's excellent lending library service - Ed.)

## tree of the month

### Malus

by RICHARD MESZLER

President, Baltimore Bonsai Club

Every year during late winter or early spring my thoughts turn to Crabapple trees for bonsai.

Aside from a personal affection for Apple trees in general, which stems from my childhood experiences, I have found Crabapple trees have many attributes that make them excellent subjects for bonsai.

Frequently, flowering trees are considered to be seasonal bonsai, as they are at their peak only during part of the year. However, Crabapples, in addition to being most attractive in the spring when in bloom, also have colorful fruit and foliage in the late summer and fall. In winter, older specimens display gnarled branches and rough bark.

Nagasaki Crabapple (Malus cerrossifera), Hall's Crabapple (M. halliana), and Sargent's Crabapple (M. sargentii) are frequently used for bonsai. There also are numerous hybrids that may be suitable.

One may find white, pink, or red single or double flowering varieties as well as varieties with green or red leaves, and yellow or red fruit. Unfortunately, these are commonly sold as grafted hybrids with tall, slender, poorly tapered trunks and no lower branches.

Suitable material may be obtained by looking for field-grown trees, layering, seeds, or, with luck, collecting. Most wild Crabapples have large thorns, which

make them undesirable for bonsai. However, one may occasionally find collectable cultivated Crabapples in pastures or near abandoned houses.

I have found that late winter or early spring are the best times to transplant Crabapples. They produce new roots quite readily from the stubs of the old ones. Indeed, at this time of the year one can virtually pull them out of the ground and be reasonably certain they will survive. This ease of rooting also makes it relatively easy to propagate Crabapples by layering.

Since root growth is so vigorous, Crabapple bonsai should be root-pruned and repotted every year. Use a neutral soil with a considerable amount of organic matter and good drainage. Water the trees often, particularly during warm weather. If Crabapples get too dry the leaves turn brown at the edges.

Crabapples also take well to branch pruning. They can be severely cut back in the early spring and will bud from old wood. I have even been able to cut off all the branches of a tree and have new growth come directly from the trunk. Needless to say, this is a very handy property for a potential bonsai.

Crabapple bonsai should be pruned and pinched constantly throughout the spring and summer, and fertilized sparingly. If this is not done, they will develop long shoots of new growth that thicken rapidly and leave large scars when finally removed. Also, be on the lookout for aphids especially on the new growth.

Easy rooting, good branch growth, flowers, and fruit - sounds ideal for bonsai. Give Crabapples a try!

## Ginza THINGS JAPANESE

TANE S. YOSHIDA

will be pleased to serve

PBA members at her shop

• bonsai books

• bonsai stands

• bonsai pots

• oriental gifts •

- Japanese dolls - kimonos  
- new zori sox - laquer  
- lacquer ware - brushes  
- happi coats - jewelry  
- parasols - fans  
- chinaware - tabi zori

1006 20th Street, NW (near K Street)

Washington, D.C. 20036

telephone 202-331-7991

## Professional Profile

DAVE OSCHRIN  
by Cliff Pottberg

Dave Oschirin is owner-operator of Liberty Nurseries, 8001 Liberty Rd., just north of the Baltimore Beltway. He has been a member of the Baltimore Bonsai Club for more than a year.

His introduction to the Baltimore group came about on a snowy night at a meeting of the now-defunct Maryland Bonsai Society when he met BBC's Cliff Pottberg.

Dave has been in the nursery business since graduating from the Delaware Valley College of Agriculture in 1938. He has owned Liberty Nurseries for 25 years, and has had an interest in bonsai for many of those years. At first he only pattered around, as he puts it, "not knowing what to do." But he has made great strides since becoming a member of the BBC, and has taken the opportunity to attend several national bonsai conventions.

Presently Dave has a good selection of mostly small bonsai pots, and some especially nice cascade pots. An even larger selection is planned for this spring, following attendance at the trade shows where he will place orders.

He also carries many plants that have excellent bonsai potential, including several varieties of Juniper, Ginkgo, Cryptomeria, Alberta Spruce, and red and green Japanese Maple in various sizes.

While conscientious about his nursery business, Dave also is careful not to mislead customers who are interested in bonsai. If they are beginners, he suggests they buy a book on the subject and notes that styling a masterpiece is

no snap. Several customers have found a way to the Baltimore Club after Dave suggested they contact that club to further their interest in bonsai. A number have become members.

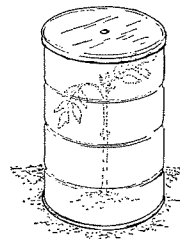
Unfortunately, Dave has little time for many outside activities, as his nursery consumes all of his daylight hours, seven days a week.

Dave is married and the father of five children.

## BGB Hosts PBA Business Meeting

Brookside Gardens Bonsai has volunteered to host the Annual PBA Business Meeting on Friday, April 19, at Brookside Nature Center, starting at 7:30 p.m. All PBA attendees are invited to remain for the BGB program of the evening. Refreshments will be served.

### PROTECTION



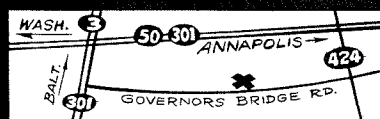
Coffee cans with lids of transparent plastic make practical and durable "greenhouses" for tender seedlings or for small trees just reotted. Cut out the bottom and fit over the tree. Punch a hole in the lid (hot icepick works well) to provide ventilation.

8 a.m. - 6 p.m.  
seven days a week  
Phone (301) 798-0231



Rt. 424 2 GOVERNORS BRIDGE RD.  
DAVIDSONVILLE, MD.

Dwarf Rhododendrons	Japanese Maples, all sizes and varieties
Dwarf Pomegranate	Cotoneasters
Dwarf Conifers	Azaleas
Dipel® biological insecticide for all catapillars	Secondary Planting Materials
	13 varieties of Junipers
	Small Pots & Bonsai Dishes



## Show Details Set

More details of the 1974 Annual PBA Bonsai Show were spelled out during a meeting of the Show Committee on Feb. 1 at the home of Molly Hersh. Chairman Milt Kidd presided. Those participating were members Jim Newton, NOVABONSOC; Richard Meszler, BBC; Joyce Pelletier, ABC; and Molly Hersh, PBA. PBA Educational Vice-President John Hreha and NOVABONSOC member Dave Flipse were also on hand. Dave will build display tokanomas.

Following is a general outline of steps leading to actual Show presentation:

- Clubs will make their own arrangements for selecting trees to represent their members. It is anticipated about 18 per club, plus some alternates, will provide a sufficient number.

- Not later than March 31 the Show Chairman must have a list of style, species, size, and total number to be offered by each club. Clubs are responsible for the transportation of trees to and from Show site.

- The final decision for layout and display of the trees at the National Arboretum will be made by the Show Committee.

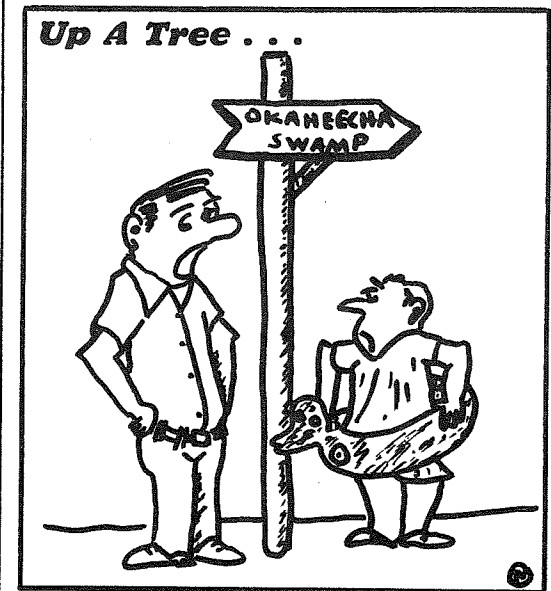
- Each tree (except Mame) will have an identification card prepared (by the committee) showing common name, botanical name, and club of owner. Each card will have spaces for optional information on estimated age of tree, time tree has been in training, and owner's name.

- Tree owners should bring appropriate stands, tables, and other display equipment.

- Volunteer hosts and hostesses will be

identified by a permanent tag labeled "Potomac Bonsai" (already procured).

For further information, and to list your name for volunteer work, call Chairman Milt Kidd at 301-926-3458 evenings and weekends, or any of the Committee members.



"Well, yes, Nipperson, Baldcypress do grow in swampy areas, but I don't think you'll need your rubber ducky on this field trip."

## Dues Due



### LOTUS IMPORT & EXPORT

PARKINGTON SHOPPING CENTER  
4210 WILSON BOULEVARD  
ARLINGTON, VIRGINIA 22203 USA

(703) 525-6171

BONSAI POTS • TRAYS • STANDS

10% discount to  
PBA and affiliated club members

- jewelry
- jade
- silk
- chinaware
- antiques
- gift items
- other orientalia