

Potomac Bonsai Association Membership Application

Welcome! We conduct a Spring Show and a Fall Symposium as well as other events. PBA is made up of the clubs listed to the right. Join one club and be eligible to attend any club meeting in addition to receiving the PBA Newsletter monthly. Residents of the Potomac Region are expected to join a club to receive all membership benefits. Individuals beyond commuting distance of a club are invited to subscribe to the PBA Newsletter.

To become a member, call the contact person of the nearest club for current rates and where to send your dues. For subscription to the PBA Newsletter only, mail a check (payable to PBA) for \$15.00 to Cy Mill, 10300 Bushman Dr., #111, Oakton, VA 22124.

Regular meeting times and places are listed. Meeting times and locations are subject to change, call first! Events are listed in the monthly PBA Newsletter.

<input type="checkbox"/> Individual	<input type="checkbox"/> Family	<input type="checkbox"/> Subscription Only
<input type="checkbox"/> Baltimore Bonsai Club	<input type="checkbox"/> Bowie Bonsai Club	<input type="checkbox"/> Brookside Bonsai Club
<input type="checkbox"/> Chesapeake Bonsai Society	<input type="checkbox"/> Kiyomizu Bonsai Club	<input type="checkbox"/> Mei-Hwa Penjing Society
<input type="checkbox"/> Northern Virginia Bonsai Society	<input type="checkbox"/> Washington Bonsai Club	

NAME _____

ADDRESS _____

CITY _____ STATE _____ ZIP _____

TELEPHONE: (Office) _____ (Home) _____

BALTIMORE BONSAI CLUB
Cylburn Arboretum, Baltimore, MD.
3rd Sunday, 1PM
Elaine Kendall, (301) 426-5421

BOWIE BONSAI CLUB
Bowie Community Center, Bowie, MD
Last Monday, 7 PM
Terry Adkins, (301) 350-3586

BROOKSIDE BONSAI SOCIETY
North Chevy Chase Recreation Center,
Chevy Chase, MD.
3rd Thursday, 7:30 PM
Jerry Antel, (301) 320-5251

CHESAPEAKE BONSAI SOCIETY
Paca Garden, Annapolis, MD
2nd Tuesday, 7:30 PM
Stephen Choi, (301) 261-8131

KIYOMIZU BONSAI CLUB
Clearwater Nature Center, Clinton, MD
3rd Saturday, 2 PM
Joan Stephens, (301) 423-8230

MEI-HWA PENJING SOCIETY
(Chinese language spoken)
Banneker Middle School, Silver Spring, MD.
Sunday, 2PM (School year only)
Akey Hung, (301) 390-6687

NORTHERN VIRGINIA BONSAI SOCIETY
Green Spring Horticultural Center,
Annandale, VA
2nd Saturday, 10 AM
Chris Yeapanis, (703) 591-0864

WASHINGTON BONSAI CLUB
U. S. National Arboretum, Washington, D.C.
Julie Walker, (202) 547-8497



PBA Annual Spring Show At the Arboretum, April 24, 25, 26

The PBA Annual Spring Show is just around the corner. Check to make sure the "POP and POST" poster from the last issue of the newsletter has been placed in a conspicuous place. Strong attendance at this event will increase support and awareness for both the National Bonsai and Penjing Collection and PBA.

Continued on page 5

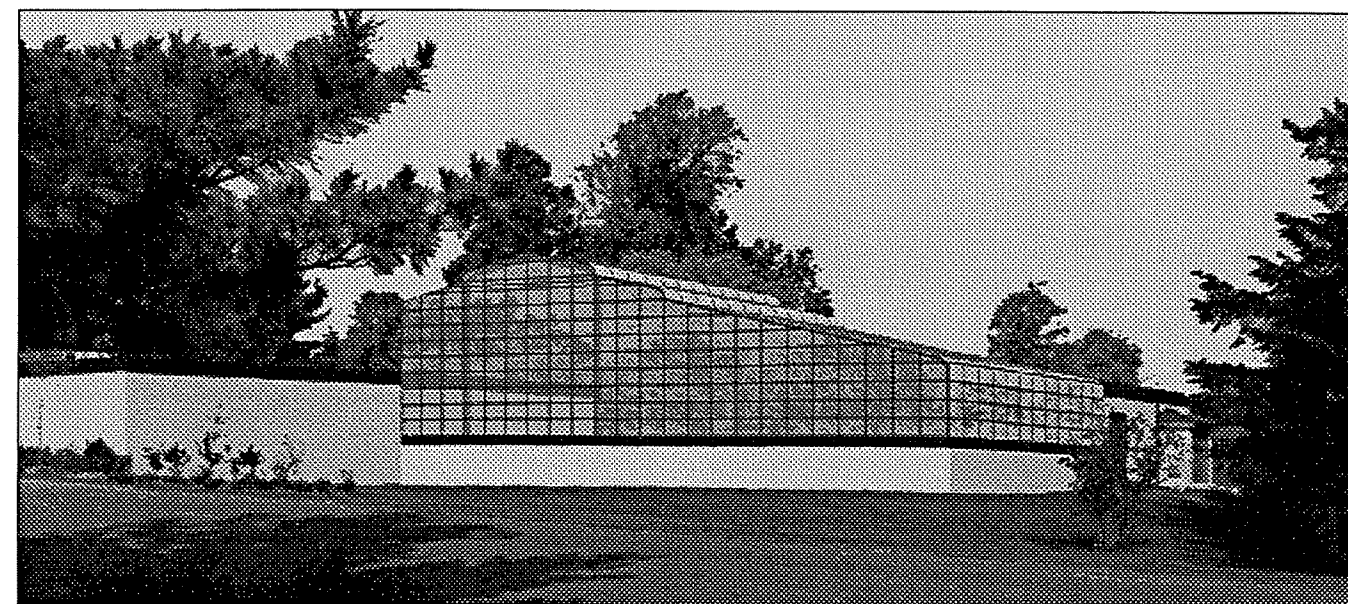
Inside	
Calendar of Events	3
Annual Spring Show	5
Annual Meeting	7
Glasshouses	7
PBA Auction	11

POTOMAC BONSAI ASSOCIATION, INC.
% U.S. NATIONAL ARBORETUM
3501 NEW YORK AVE., NE
WASHINGTON, D.C. 20002

NON-PROFIT ORG.
U.S. POSTAGE
PAID
MERRIFIELD, VA
PERMIT NO. 659

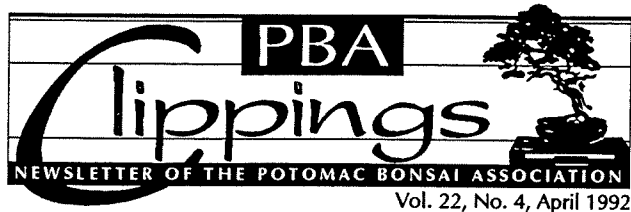
**TIME
CRITICAL
INFORMATION**

AFFIX LABEL HERE



Composite photograph of "Glasshouses" addition to the National Bonsai and Penjing Collection. Article on page 7.

CALENDAR OF EVENTS



The PBA Newsletter (ISSN 0160-9521) is Published by the Potomac Bonsai Association, Inc. (PBA), a non-profit organization, in the interests of its affiliate member clubs and societies.

Subscriptions:

PBA Member Clubs/Societies: Annual subscription is included in the membership dues paid to the PBA Club or Society of your choice. Telephone numbers of points of contact for information about any member club or society and its annual dues, are listed under the Calendar of Events section of this Newsletter.

Non-Member Subscriptions: Individuals residing within the Washington, D.C. metropolitan area are encouraged to become members of a club to receive the newsletter. Annual subscription for 12 issues of the PBA Newsletter only is \$15.00 which should be made payable to the Potomac Bonsai Association and sent to Cy Mill, 10300 Bushman Drive, #111, Oakton, VA 22124.

Advertising Rates:

Monthly rates: 1/4 page, \$6.00; 1/2 page, \$12.00; full-page, \$19.00. 20% discount for advertisements that run 3 or more months.

Advertising and Articles — Please send to the editor: J. F. Koetsch, 6709 Caneel Ct., Springfield, VA 22152; (703) 569-9378.

PBA Officers:

- President**
Russ Kinerson
- First Vice-President**
Chris Yeapanis
- Acting Educational Vice-President**
Arschel Morell
- Secretary**
Julie Walker
- Treasurer**
Jerry Antel, Jr.
- Public Relations**
Tony Meyer
(301) 654-1854
- Membership**
Cy Mill
- Newsletter Editor**
Jules Koetsch

New Look for Newsletter

The PBA newsletter is changing it's look. Reinforcements have arrived for the daunting task of publishing the newsletter. Hal and Judy Wise have taken over the task of rounding up information for the *Calendar of Events*. Steve McCarthy, Beth Potrate and Jeff Stephanic will be working on re-designing the format, artwork, collection of material and copy fitting/editing. A volunteer is sought to recruit advertising for the newsletter.

Feedback on the re-design is encouraged. This should be a reader driven publication. Let the editorial team know what works and what is lacking. The PBA newsletter is by, of and for the membership.

Putting together a monthly newsletter requires a great deal of time and effort. Publishing with an all volunteer team adds to the difficulty. Active support is needed from all members of PBA clubs to make this a successful publication. This is our news and all have something to contribute. Please consider putting your thoughts, expertise, questions or artistic talent to paper (or diskette!) and submit material to be published. A response form is provided on page 9. Please take a few moments and make a contribution.

Plans include:

- Changing to an 8 1/2" x 11" format
- Supplying guidelines for authors
- Publishing lists of desired material
- Providing copy editing for authors
- Building a library of images, tips and quotes as "fillers" and more . . .

Suggestions, in writing please, are encouraged!

Let's make this the best club newsletter!

Jules Koetsch, Editor



Illustration by Steve McCarthy, 1992, Northern Virginia Bonsai Society

APRIL

Meeting location and club contact number for additional information is as listed unless otherwise noted in calendar listing.

- Baltimore Bonsai Club
Cylburn Arboretum
(410) 668-1868
- Bowie Bonsai Club
Bowie Community Center
(301) 350-3586
(202) 667-1010
- Brookside Bonsai Society
North Chevy Chase Recreational Center
(301) 365-7621
- Chesapeake Bonsai Club
(301) 261-8131
- Kiyomizu
Clearwater Nature Center, Clinton, MD
(301) 645-3519
- Mei—Hwa Penjing Club
Banneker Middle School
(301) 390-6687
- Northern Virginia Bonsai Society
Green Spring Horticultural Center
Annandale, VA
(703) 591-0864
- Washington Bonsai Club
U.S. National Arboretum
(202) 296-2442

Organizations sponsoring regular events of interest to PBA members:

- Philadelphia-Matsu-Momiji
410 Borbeck St., Philadelphia, PA
(215) 722-6286
- Richmond Bonsai Society
Imperial Plaza, 1717 Bellevue Ave.,
Richmond, VA
(804) 749-4956
- U.S. Botanical Gardens
(202) 226-4082
- U.S. National Arboretum
(202) 475-4857

- National Arboretum "Visiting Exhibit-Bowie Bonsai Club" 1-12
- Thursday US National Arboretum 2,9
Bonsai class for Beginners with Robert Drechsler, Curator, National Bonsai Collection. Fee, material provided. 10 am-Noon.
- Saturday & Sunday 4-5
Philadelphia, Matsu-Momiji Nursery Spring Show at the Tyler Arboretum. Call for information (215) 722-6286.
- Sunday 5
Kiyomizu Bonsai Club
Soil mixing at Chuck Bird's home. Call for directions (301) 423-8230.
- Sunday & Monday 5-6
Brookside Bonsai Club
Chase Rosade Intensive 2 day Workshop. Rosade Bonsai Studio, New Hope, PA. Call Bill Spencer at (301) 871-5768. \$80.00
- Tuesday 7
US National Arboretum
Bonsai class for Beginners with Robert Drechsler, Curator, National Bonsai Collection. Fee, material provided. 10 am-Noon.
- Wednesday & Tuesday 8,14
US National Arboretum
Bonsai Refinement Workshop, staff. Yoshimura Center (Wed. 6:30-9 pm or Tues. 1-3 pm. Reservation required, \$10.00 fee.
- Saturday-Sunday 11-12
Northern Virginia Bonsai Society Spring Show, 10 am-4 pm.
- Saturday 11
Baltimore Bonsai Club
Collecting Trip. Call (410) 686-5320
- Saturday 11
Washington Bonsai Club
Refining Workshop. Richard Meszler. 2 pm.
- Saturday & Sunday 11-12
Northern Virginia Bonsai Society
"Spring Show," 10-4 pm Saturday, Noon-4 pm Sunday. Roy Nagatoshi demonstration. Contact club for special workshop information.

- Friday-Sunday 24-26
US National Arboretum
PBA Spring Show, Administration Building and grounds. 10 am-5 pm. Features exhibits, demonstrations and vendors.
- Saturday 25
Richmond Bonsai Society
"Informal Upright Style" Julian Adams. Lecture, demonstration and workshop. Call for more information.
- Saturday & Sunday 25-26
Philadelphia-Matsu-Momiji
Open House, Doug Signorovitch (465 Edgewood Dr., Hatfield, PA. (215) 855-4519.
- Monday 27
Richmond Bonsai Society
"Roundtable: Pines" 7-9 pm. At the same time, Beginner's Corner, "Jins and Sharis."

MAY

- National Arboretum "Visiting Exhibit - Greater Philadelphia Bonsai Club" 2-10
- Saturday & Sunday 2-3
Philadelphia-Matsu-Momiji
Open House, 9 am-4 pm. 410 Borbeck St., Philadelphia, PA, (215) 722-6286.
- Friday 8
US Botanic Garden
"The Art of Botanical Drawing," with Robert Prichard, horticulturalist. 12-1 p.m.
- Saturday 9
Baltimore Bonsai Club
Clyburn Arboretum Market Day Display, 9 am-3 pm, Baltimore, MD.
- Saturday 9
Northern Virginia Bonsai Society
"Beginner's Workshop," 9 am. "Azaleas," 10 am.
- Sunday 10
National Arboretum Yoshimura Center
Public Bonsai Demonstration. 1:30 pm, Free.
- Saturday & Sunday 9-10
Greater Philadelphia Bonsai Show, Willow Grove Mall, Willow Grove, PA. (215) 772-6286.

Calendar continued on next page

Calendar continued . . .

MAY

11,13,18,20
National Arboretum
USDA Graduate School, "Introduction
to Bonsai." Call USDA (202) 690-4280.

Friday 15
US Botanic Garden
"Garden Management," Robert
Prichard. Noon-1 pm.

Saturday 16
Washington Bonsai Club
To be announced.

Saturday & Sunday 16-17
Philadelphia-Matsu-Momiji Nursery
Symposium on improving and
learning bonsai techniques with David
Easterbrook, Steve Pilacik and Frank
Mihalic. Materials to be used are
cherry, eunonymus and scotch pine.
Call for information. (215) 722-6286.

Sunday 17
Baltimore Bonsai Club
Workshop at Mike Ramina's, 1 pm.

Sunday 17
Kiyomizu Club
Group planting and repotting. 2 pm.

Monday 18
Richmond Bonsai Society
"Bonsai Refinement," 7-9 pm. At same
time, Beginner's Corner - "Defoliating
Japanese Maples and other Trees."

Thursday 21
Brookside Bonsai Club
"Mame Group Planting"
Doris Froning. 7:30 pm.

Saturday 23
PBA Annual Auction/Behnke Nurser-
ies, Beltsville, MD.
Starts at 10 am. Article in this issue.

Saturday 23
Brookside Bonsai Club
"Mame Group Planting Workshop,"
Doris Froning. Material & container
provided. For information call Janet
Lanman at (310) 365-7621. \$25.00.

Saturday & Sunday 23-24
Greater Philadelphia Bonsai Show
Echelon Mall, Echelon, NJ.
(215) 772-6286.

Sunday 24
Natioanl Arboretum Yoshimura Center
Public Bonsai Demonstration, 1:30 pm

Friday 29
US Botanic Garden
"Environmental Gardening," Holly
Shimizu, program specialist. 12-1 pm.

JUNE

National Arboretum 6-14
"Visiting Exhibit - Brookside Bonsai
Society"

Tuesday & Wednesday 9-10
Natioanl Arboretum
"Refinement Workshops"
Tues. 1-3 pm, Wed. 6:30-9 pm.

Saturday 13
Northern Virginia Bonsai Society
Annual member workshop at
John Simpson's home. 10 am. Call for
information.

Saturday 13
National Arboretum
"Aspects of Bonsai Styles," David
DeGroot, Curator, Pacific Rim Bonsai
Collection. 1 pm.

Sunday 14
National Arboretum Yoshimura Center
Public bonsai demonstration, 1:30 pm.

Thursday 18
Brookside Bonsai Club
"Three Ring Circus." 7 pm.

Saturday 20
Washington Bonsai Club
Azalea Workshop. Arschel Morell. 2
pm. National Arboretum.

Sunday 28
Baltimore Bonsai Club
"A Day with Fred Mies," at Mies home,
Rockville, MD.

Sunday 28
Kiyomizu Club
"Azaleas," with Bill Merritt. 2 pm.

ETCETERA

Wolf Trap Nursery provides free
lecture/demonstrations on Bonsai care.
Lectures are held on the last Saturday
of the month from 9-10:30 am. For
information call (703) 759-4244. 9239
Leesburg Pike, Vienna, VA.

April 25-26, 1992
1992 German Bonsai Exhibition,
Dusseldorf.
Contact Bonsai-Werkstatt Werner M.
Busch, Hammer Dorfstrabe 167, D-
4000 Dusseldorf, Germany.

April 24-26, 1992
MidAtlantic Bonsai Societies Festival
Sheraton Hotel, Mihwah, NJ. Lectures
and demonstrations by Hotsumi
Terakawa and John Naka among
others. For more information write:
MidAtlantic Bonsai Societies, 234
Sagamore Dr., Milburn, NJ 07041.

May 9-10, 1992
Puget Sound Bonsai Association
"Spring Show," Univ. of West Seattle,
Center for Urban Horticulture.

May 15-17, 1992
Vancouver Island Bonsai Club
"Spring Show," Hillsdale Mall,
Victoria, B.C.

May 21-25, 1992
27th Internatioanl Bonsai Congress
Memphis, TN. Features Masahiko
Kimura, John Naka, Ben Oki, Roy
Nagatoshi among others. For informa-
tion write IBC'92, P.O. Box 241399,
Memphis, TN 38124.

May 22-24, 1992
Netherland Bonsai Society
"Spring Symposium," Hotsumi
Terakawa and Satoru Hanya. The
Hague, Netherlands. Contact:
J. V. Oldebarneveltlaar, 48 2582 NV,
The Hague, Netherlands.

June 17-21, 1992
American Bonsai Society Symposium
ABS silver anniversary symposium
with the Susquehanna Bonsai Club,
Hershey, PA. Features Vaughn Banting,
Susumu Sudo, Chase Rosade, Doris
Froning among others. Contact
Susquehanna Bonsai Club, P.O. Box
792, Hershey, PA. 17033-0792.

May 22-24, 1993
Netherlandse Bonsai - 20th Year, The
Hague, Netherlands.
Contact J.V. Oldenbarneveltlaan, 48
2482 NV, Gravenhage, Netherlands.



Annual Show . . . (continued from front page)

The Spring Show Features:

- Bonsai and Suiseki displayed by PBA member clubs.
- A bazaar with as many as 12 vendors selling plants, tools, pots, books, etc.
- Demonstrations on how to create a bonsai: 2 demonstrations per day at 11:00 a.m. and 2:00 p.m.
- An opportunity to view the National Collection of Bonsai and Penjing including the new North American Collection in the recently dedicated John Y. Naka Pavilion.
- The National Arboretum's azaleas and rhododendrons should be in full flower.

Invite Friends and Acquaintances

Non-PBA members will be asked, upon entering the PBA exhibit area, to voluntarily make a tax-deductible \$2.00 donation to the National Bonsai Foundation.

A Quality Show

All PBA member clubs should support the show by selecting and grooming bonsai and suiseki to be displayed. The following guidelines apply:

- All trees should be in bonsai display pots or on slabs and not in training pots.
- Bonsai should be exhibited on suitable stands or wood slabs if available, since this will be an indoor display.
- Wiring should be kept minimal and there preferably should be no wiring. Trunks should not be wired. Shiny wire is a no-no!!
- Trees should be mature enough that the trunks need not be wired.
- An appropriate accent plant or accessory should accompany the bonsai and also be on a display stand or wood slab that compliments the stand or slab that the bonsai is on. This does not apply if the bonsai is not on a stand or slab.

Delivery of Display Items:

Delivery:

All trees shall be delivered on Thursday, April 23, between 8:00 a.m. and 5:00 p.m.

Note: Exhibitors may have some concern about leaving their prize bonsai indoors at the Arboretum for the full four (4) days of the show. Concerned individuals should make arrangements to have a replacement from another PBA member or from their own collection.

Accompanying Information

Labels containing background information for each of the trees will be laser printed by Jeff Stephanic. The cards will be uniform with attractive lettering. PBA member clubs should forward label information to Chris J. Yeapanis (see contact information in coordination section) no later than April 20.

Required Label Information:

Please list information for all material according to the following outline.

Bonsai and Accent Plants:

- Owner's name and telephone number. This will not be displayed to visitors! It will be used only if the owner must be contacted.
- Botanical name
- Common name
- Age
- Years in training
- Source of the material, i.e.
Grown from seed
Air-layered
Grafted
Cutting
Nursery Stock
Bonsai in Training
Collected
- Special care notes for monitors.

Suiseki:

- Owner's name and telephone number which will be kept private.
- Type of stone
- When and where found
- Wood used for the display stand

Retrieval of Display Items

Exhibitors shall pick up their items on display after the close of the show at 5:00 p.m. on Sunday, April 26. PBA will not be responsible for items not picked up by 6:00 p.m. on the 26th. Unclaimed items will be donated to the PBA Auction in May.

Space Allocation for PBA Clubs

Each display table is six feet long. Table allocation for member clubs is as follows:

No. of Tables	Club
5	Baltimore
3	Bowie
6	Brookside
5	Chesapeake
3	Kiyomizu
2	Mei-Hwa Penjing
6	Northern Virginia
2	Washington

continued on next page

Annual Show continued . . .

Plan displays to avoid a crowded or, worse yet, an over crowded feeling. Follow the Japanese aesthetic of *shibui*, which involves an exercise of restraint, to the point where there seems to be room for one more item. Consider three or four bonsai (with accents plants) per table for visual effect. Pre-planned club layouts will enhance the exhibit and reduce final installation confusion.

Emphasis should be on Quality not Quantity. If a person's tree does not get into the show, there's always next year.

PBA Member Volunteers Needed

Help is needed from PBA members to produce a successful show. The PBA Annual Spring Show is one event that helps build PBA membership. Increased membership enhances program development for PBA and member clubs. Volunteers are needed for the following:

- Setting up the show.
- Dismantling the show.
- Collecting donations at the entrance of exhibit during showtimes.
- Acting as monitors of each club's display during showtimes.

Coordination

All PBA member clubs should solicit volunteers for the above activities. It is recommended that each PBA club appoint a member to coordinate the selection of items for the club display, submit display information on time and recruit volunteers for show activities.

Questions relating to the organization of this event should be directed to the 1992 PBA Annual Show coordinator:

Chris J. Yeapanis
4228 Berrit St.
Fairfax, VA 22030
Work (301) 590-8580
Home (703) 591-0864

Set-Up

Setting up the display tables and arranging the display area will take place on Thursday, April 23, 9:30 a.m. Helpers can report anytime after 9:30 a.m. The earlier everyone arrives, the sooner the job will be finished. The set-up should be completed by 1:00 p.m. Volunteers arriving before 10:00 a.m. should use the Bladensburg Road gate. The New York Avenue entrance will not open until 10:00 a.m.

Dismantling

The exhibit will be taken down on Sunday, April 26, at 5:00 p.m. Individuals coming to retrieve display item/s are encouraged to consider spending a little time helping with the dismantling effort.

Taking Donations at the Door

This task involves staffing a table at the entrance to the exhibit, passing out to interested parties information on PBA and the member clubs, and discreetly asking that adult visitors contribute \$2.00 to The National Bonsai Foundation. The money will go to improving and sustaining the National Collection which they have the opportunity to visit without charge.

This station at the door will be:

Staffed during showtimes: 10:00 a.m. to 5:00 p.m., April 24, 25, 26.

Morning shift: 10:00 a.m. to 1:30 p.m.

Afternoon shift: 1:30 p.m. to 5:30 p.m.

Volunteers need only man one shift.

Display Monitors

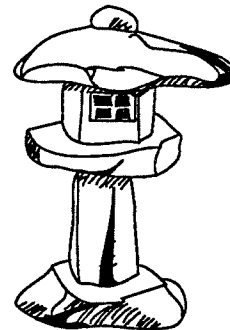
Each PBA club should endeavor to have a member at their display tables during the 10:00 a.m. to 5:00 p.m. hours on April 24, 25, and 26. The monitors serve the following functions:

Answer questions from the visitors or direct them to one who can answer.

Ensure that the plants on display are watered and misted as needed. If necessary, special care notes may be provided by owners.

Preventing vandalism and thievery.

Note: Individuals present at the Arboretum during lunchtime may want to bring their lunches.



PBA Annual Meeting

Time: 5:30 pm.

Date: Saturday, April 25, 1992

Place: U.S. national Arboretum Administration Building, basement classroom.

Buffet: Free eats - Chinese carryout.

PBA members may bring a companion of their choice. The guest may be a non-member.

Why not plan to spend Saturday afternoon at the Arboretum. Attend the 2:00 p.m. lecture/demonstration (free), see the show, tour the National Bonsai and Penjing Collection, and shop at the vendor's booths. Afterwards, attend the PBA Annual Meeting and enjoy a free Chinese dinner.

The PBA Annual Meeting is where members may vote for the 1992-1993 PBA Officers. Nominees may be proposed from the floor.

The current nominees are:

President
Russ Kinerson

First Vice-president
Chris Yeapanis

Educational Vice-president
Arschel Morell

Secretary
Julie Walker

Treasurer
Jerry Antel

Membership
Cy Mill

Public relations
Tony Meyer

PBA Newsletter Editor
Jules Koetsch

See you at the PBA Annual Meeting.

Glasshouses for the National Bonsai and Penjing Collection

Two "glasshouses" for the National Bonsai and Penjing Collection have cleared the first hurdle towards construction. The National Capital Planning Commission has approved design coordination. Further reviews of construction plans and specifications by both the Department of Agriculture and the National Capital Planning Commission will occur in early April. Completion of these reviews will trigger an all out effort to prepare contract bidding documents to award a construction contract. The schedule anticipates for the start of construction in August and completion in November of this year.

One of the "glasshouses" will be for the public display of tropical trees during Washington's winter months. Some of these trees are currently in the National Collection from China and Hawaii. Public entry to this "glasshouse" will be through the Naka Pavilion. The other "glasshouse" will be for overwintering trees from the National Collection while they are not on public display. This temperate "glasshouse" will be for use by the Curator, his staff and volunteers.

This will not happen without adequate funding. While donations are coming in, funds equivalent to the estimated cost of construction must be on deposit by July before a contract can be advertised. Please send tax-deductible contributions to The National Bonsai Foundation, P.O. Box 32377, Washington, D.C. 20007. Make checks payable to The National Bonsai Foundation.

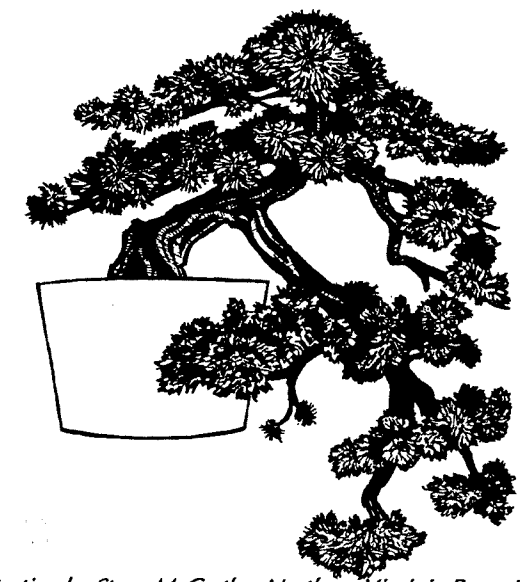


Illustration by Steve McCarthy, Northern Virginia Bonsai Society

Return Address:

Place
1st Class
Postage
Here

J. F. Koetsch, Editor, PBA Newsletter
6709 Caneel Ct.
Springfield, VA 22152



Azaleas & Rhododendrons

No Doubt the Largest Selection in the Area
Over 150 varieties, many new introductions.
Choose while they are coming into bloom.

Japanese Maples

Beautiful accents
'Bloodgood' • 'Aconitifolium' • 'Laceleaf'
'Garnett' • 'Crimson Queen' • 'Everred' • 'Viridis'

Roses

Over **325** varieties to choose from.
All are potted, #1 plants, not packaged
Hybrid teas • Floribundas • Grandifloras • Climbers
Meidilands • Miniature & "Baby" Tree Roses

55 varieties of "Old Fashioned Roses"
This should please many collectors.

Evergreens

Broadleaf and Needle Varieties
Looking for something different?
Exciting selection of unusual and dwarf evergreens. For foundation planting and in rock gardens; or as accent plants, there are no finer evergreens to plant than the dwarfs - Don't hide your home behind unsuitable evergreens - very little trimming, years of enjoyment.

Perennials - 1800 varieties - in pots

SPECIALISTS in the newest varieties and old favorites.

HOUSEPLANTS

African Violets • 'We're known for our violets'
10,000 sq. ft. GREENHOUSE filled with Tropicals, Cacti, Bonsai, Pottery, Baskets, Fountains, Statuary, Garden Ornaments and much more.

BELTSVILLE, MD
Garden Center • 937-1100
FTD Florist • 937-4032
Landscape Contracting • 937-4035
11300 Baltimore Ave. (U.S. 1)
2 miles North of Exit 25A Capital Beltway
LARGO, MD
Garden Center • 249-2492
700 Watkins Park Drive
Between Central Ave. & Route 202

Open Daily 8 AM to 7 PM • Sunday 8 AM to 5

"Known for Quality Plants"

PBA Auction

Saturday, May 23, 1992

Location: Dawn Rose Building, Behnke's Nursery

Time: 10:00 a.m.

It is once a year that one has the opportunity to get some real bargains and rare finds. Yes, it's the Annual PBA Auction at Behnke's Nursery. This is an opportunity to get items such as:

Trained bonsai	Starter Stock	Pots
Wire	Tools	Books
Suiseki	Etc.	

The format for this year will consist of an auction only with no consignment sales. In addition, there will be a bidder registration with bidding numbers and cards issued. Be sure to sign up and receive a bidding card. Godfrey Trammell will once again coordinate this event and he is in need of a few volunteers to help organize the auction. Please call (202) 606-4571 and volunteer to help.

Schedule:

8:00 a.m.	Behnke Nursery opens.
9:00-10:00 a.m.	Bidder Registration
	Delivery of items for auction. Each item must be accompanied by a written description for the auctioneer to include if applicable:
	1. Where and when acquired
	2. Common and botanical name
	3. Age
	4. Minimum bid if desired
10:00 a.m.	Auction begins
12:00 Noon	End of Auction

The auction will be held rain or shine. The location is in the Dawn Rose building. Guide signs will be posted. A 15% commission on all sales will go to the PBA Treasury. Once again, PBA is grateful for the generosity of Behnke Nurseries in offering, at no charge, their facilities for this auction.



THE CHINA BONSAI COMPANY
"The Historical Roots of Bonsai are in China"

The China Bonsai Company is a division of China Best, Inc., Seattle, Washington and Canton, China. The purpose of the China Bonsai Company is to represent directly, selected Chinese Bonsai nurseries to the American Bonsai nursery community. The Company, a licensed importer, is committed to expanding the American Bonsai collector's appreciation and understanding of the major styles of China's Bonsai schools and in particular, Guangzhou's Ling Nan School of Bonsai.

PRODUCTS — "We Ship Worldwide"

THE CHINA BONSAI COMPANY'S AMERICAN IMPORT/WHOLESALE/MAIL ORDER PRODUCTS, SEATTLE.

- | | |
|----------------------------------|---------------------------------|
| * China Bonsai plants | * China Bonsai stone landscapes |
| (Aged Bonsai upon special order) | * China Bonsai clay figures |
| * China Bonsai pots | * China Bonsai publications |

ASSOCIATIONS

THE CHINA BONSAI COMPANY'S CHINA ASSOCIATES

- | | |
|--|---|
| * Bonsai nurseries, export to Asia, Europe and America | * China's National Bonsai Masters |
| * The China National Bonsai Association, Beijing | * The Ling Nan Bonsai Center, Guangzhou |

THE CHINA BONSAI COMPANY'S AMERICAN ASSOCIATES

- * The Bonsai Club International (member)
- * The Puget Sound Bonsai Association (member)

THE CHINA BONSAI COMPANY
 14627 18th Ave., S.W.
 Seattle, WA 98166
 Phone: 206-439-0729 Fax: 206-439-0726

1992 CATALOG AVAILABLE \$2.00



**THE AMERICAN BONSAI SOCIETY
 AND SUSQUEHANNA BONSAI CLUB**

- | | |
|------------------|---------------------------------|
| FEATURES: | SHOHIN SEMINAR/WORKSHOP: |
| Susumu Sudo | Dorie Froning |
| Bruce Baker | Jack Billet |
| Vaughn Banting | Larry Ragle |
| David DeGroot | |
| Chase Rosade | |

Exhibits • Critiques • Workshops • Large Vending Bazaar
 Hershey and PA Dutch Tours • PA Dutch Dinner • Raffles • Bonsai Race
 and much more.

Vending and Information: Susquehanna Bonsai Club
 ABS 1992 Annual Symposium
 P.O. Box 792
 Hershey, PA 17033-0792

**We Welcome The Opportunity To
 Show You Our Definition Of Quality**

Growing: Japanese Maples
 Dwarf Conifers
 Pre-Bonsai
 (over 7 acres under production)

New Studio: Classes, Tools, Pots, Lanterns,
 Stands, Supplies, Plants



1451 Pleasant Hill Rd
 Harrisburg, PA 17112

(Sorry, No mail orders)
 Open Daily 9-5, Closed Sunday
 717-545-4555



BONSAI
盆栽

E & A BONSAI HOUSE

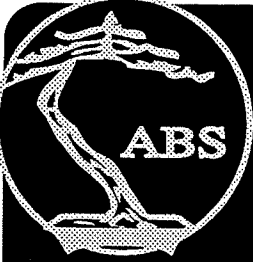
16505 New Hampshire Ave.
Silver Spring, MD 20904
(301) 384-9879

ginza
"THINGS JAPANESE"
BONSAI AND IKEBANA SUPPLIES

POTS • TOOLS • BOOKS
VASES • SUIBAN • BASKETS
IRON AND STONE LANTERNS
BONSAI MINIATURES



ginza
1721 CONNECTICUT AVE., N.W. DC
Between R & S - 2 blocks N of
Dupont Circle Metro (Red Line)
OPEN 7 DAYS-VISAMC
202-331-7991




THE AMERICAN BONSAI SOCIETY

- ✓ Quarterly Journal
- ✓ Four Newsletters
- ✓ Lending Library
- ✓ Slide Program & Video Rentals

Excited about Bonsai? Join Us!

Send name, address, and check,
\$20 individual, \$22 Couple
Checks should be in U.S. dollars
and payable to ABS
Mail to ABS, P.O. Box 358, Keene, NH 03431



BONSAI ASSOC., INC.
YOUR EVERYTHING FOR BONSAI COMPANY

3000 Chestnut Avenue, #106
Baltimore, Maryland 21211
(301) 235-5336

CATALOG \$2.00 REFUNDABLE

BOOKS	TOOLS
PLANTS	INSTRUCTION
POTS	LECTURES, DEMOS
SOIL COMPONENTS	
ANNEALED COPPER WIRE	



WOLF TRAP NURSERY

SINCE 1972

VIENNA, VIRGINIA 22180

Your Bonsai Specialists . . .

- **STARTER BONSAI**—large selection of both indoor and outdoor material
- **TOOLS**—Masakuni, Kiku
- **POTTERY**—Tokoname, Seto, Hotoku and other imports
- **BOOKS**—many titles to choose from
- **CLASSES**—held at the nursery on the last Saturday of each month, by Martha Meehan

(703) 759-4244

9439 LEESBURGH PIKE (RT. 7)
3 1/2 MILES WEST OF TYSONS CORNER

HOURS: 8:30 am–6:00 pm Monday thru Saturday
10:00 am–6:00 pm Sunday

