

ISSN 0160-9521

Newsletter

CALENDAR OF EVENTS

For planning purposes, dates of events of future events that are of interest to all PBA member clubs are listed at the end of this calendar so that meeting dates can be adjusted accordingly.

4, 9, 11, 16 April Tuesdays and Thursdays

U. S. NATIONAL ARBORETUM 10:00 a.m. to 12:00 p.m. at the Bonsai Pavilion (Yoshimura Center). BONSAI CLASS FOR BEGINNERS to be given by Robert Drechsler, Curator of the National Bonsai and Penjing Collection. This four session course is designed to introduce students to the basic techniques of developing and growing bonsai through lectures, films and workshops. The class will include a short history of bonsai, basic principles, culture and styles. Primary techniques of branch pruning, root pruning, wiring and potting will be discussed.

REGISTRATION IS REQUIRED (202) 475-4857. Text and materials included in fee of \$45/FONA members \$40.

9 April Thursday

CHESAPEAKE (301) 266-7336 or (202) 261-8131. 7:00 p.m. at the Annapolis Library. ANNUAL MEETING of the MEMBERSHIP.

PBA NEWSLETTER

Published by the Potomac Bonsai Association, Inc. (PBA), a non-profit organization, in the interests of its affiliate member clubs and societies.

CIRCULATION

Over 400 internationally on a monthly basis.

SUBSCRIPTIONS

PBA membership includes 12 monthly Newsletters covered by part of the annual membership dues. Corresponding membership: \$9.50 for 12 monthly Newsletters. Make checks payable to the Potomac Bonsai Association and mail to Cy Mill, 9229 Arlington Blvd., Apt. 160, Fairfax, VA 22031.

ADVERTISING RATES

Monthly rates: 1/4 page - \$6.00; 1/2 page - \$12.00; full-page - \$19.00
20% rate reduction for advertisements that run for 3 or more months

ADVERTISEMENTS and/or ARTICLES Send to the editor.

EDITOR J. F. Koetsch, 6709 Caneel Ct., Springfield, VA 22152; (703) 569-9378.

PRESIDENT: Bob Sitnick; FIRST VICE PRESIDENT: Russ Kinerson; EDUCATIONAL VICE PRESIDENT: Chris Yeapanis; SECRETARY: Julie Walker; TREASURER: Jerry Antel, Jr.

PUBLIC RELATIONS: Tony Meyer (301) 654-1854.

POTOMAC BONSAI ASSOCIATION, INC.
% U.S. NATIONAL ARBORETUM
3501 NEW YORK AVE. NE
WASHINGTON, D.C. 20002

NON-PROFIT ORG.
U.S. POSTAGE PAID
MERRIFIELD, VA
PERMIT NO. 659

**TIME
CRITICAL
INFO**

10 April Wednesday

U.S. NATIONAL ARBORETUM 6:30 p.m. to 9:00 p.m. at the Vonsai Pavilion (Yoshimura Center). BONSAI REFINEMENT WORKSHOP to be given by Dan Chiplis, Assistant to the Curator, National Bonsai and Penjing Collection. The workshop is designed for individuals who need assistance with a bonsai and have had some experience with growing them. If you need personal attention with repotting or refinement of your plant, this is the workshop for you.

Materials are not provided.

Registration is required (202) 475-4857

*Prerequisite - Beginner's Bonsai Course

13 April Saturday

BOWIE (301) 350-3586. 9:00 a.m. meet at the Bowie Community Center for COLLECTING TRIP. Bring the necessary equipment.

13 April Saturday

BROOKSIDE (301) 365-7621. 10:00 a.m. at Bob Turvene's house. CHOOSING TREES FOR PBA SHOW. Bring your best and help in the decisions.

13 and 14 Saturday and Sunday

NORTHERN VIRGINIA (703) 765-7223. 10:00 a.m. to 5:00 p.m. at Green Spring Horticulture Center. SPRING SHOW and selection of trees for the PBA Spring Show.

18 April Thursday

BROOKSIDE (301) 365-7621. 7:30 p.m. at the North Chevy Chase Recreation Center. DEMONSTRATION OF GROUP PLANTING by Tom Young, Canadian visitor, currently a member of NOVA.

18, 19, 20, 21 Thursday thru Sunday

CHESAPEAKE (301) 266-7336 or (202) 261-8131.

CHESAPEAKE BONSAI SOCIETY SECOND ANNUAL EXHIBITION, Paca Garden, 1 Martin St., Annapolis, MD.

19, 20, 21 April Friday, Saturday, Sunday

MID-ATLANTIC BONSAI FESTIVAL, Marriott Hotel, Saddle Brook, New Jersey. See advertisement in this Newsletter.

20 April Saturday

WASHINGTON (202) 583-2676. 2:00 p.m. at the U.S. National Arboretum. REFINEMENT WORKSHOP. Bob Drechsler, Curator, National Bonsai and Penjing Collection will conduct our refinement workshop. Bring trees, even those you do not consider show-worthy. Of course, bring those

21 April Sunday

BALTIMORE (301) 825-0863. Loch Raven Branch, 1046 Taylor Ave. 1:00 p.m. BEGINNER'S WORKSHOP. 2:00 p.m. meeting starts. ELECTION of OFFICERS to be followed by discussing PREPARATION of TREES for PBA SPRING SHOW.

24, 15, 26, 27 April Thursday thru Sunday

PBA ANNUAL SPRING SHOW at the U.S. National Arboretum. See this Newsletter for details.

26 April Saturday

PBA ANNUAL MEETING. PBA members can participate in discussions concerning old and new business and the election of the '91-'92 PBA Officers. Free buffet dinner to all attendees. Members can bring companions of their choice.

+ + + + +

FUTURE EVENTS

25 May Saturday

PBA ANNUAL AUCTION at Behnke Nurseries. Starting time is 10:00 a.. This will be a banner auction since there will be well-developed bonsai from the collections of Bob Coates and Dennis R. Hamel (both now deceased). The auction will be covered in detail in the next issue of the Newsletter.

5 thru 8 June

AMERICAN BONSAI SOCIETY ABS '91, Park City, Utah. It's the annual ABS bonsai symposium. For more information contact The Bonsai Club of Utah, P.O. Box 58975, Salt Lake City, UT 84158.

24 thru 28 July

BONSAI CLUBS INTERNATIONAL IBC '91, Birmingham, England. It's the annual BCI symposium, - flyers were included with the last Newsletter.

28 and 29 September

PBA ANNUAL SYMPOSIUM, U.S. National Arboretum. Theme is UNUSUAL BONSAI - i.e. driftwood, windswept, clump.

BONSAI CLASSES

One of the problems that has persistently faced newcomers in PBA is the difficulty in obtaining bonsai instruction, especially for the neophytes. The following is a listing of courses that will be available in some areas.

1 April Monday

GREEN SPRING FARM PARK, 4603 Green Spring Road, Alexandria, VA, (703) 642-5258. INTRODUCTION to BONSAI
7:00 to 9:00 p.m. Register by mail. COST: \$5.00 .

2 or 3 April Tuesday or Wednesday

GREEN SPRING PARK (address in 1 April entry above) Same workshop given on either evening, - CREATE a BONSAI. Participants will train a young plant using bonsai techniques. Root-pruning, branch-pruning, wiring and potting will be covered. Prerequisite: Introduction to Bonsai listed above. Cost: \$20.

4, 9 11, 16 April

U.S. NATIONAL ARBORETUM: BONSAI CLASS for BEGINNERS
See Calendar of Events for listing at the same dates.

BEGINNERS' BONSAI CLASSES

Lam's Nature Gardens is sponsoring a series of bonsai classes for beginners. Bill Merritt will conduct the classes, which will be limited to ten (10) participants each. There will be two classes each consisting of four sessions each.

The first class will be given on Wednesday evenings - March 20 and 27 and April 3 and 10, each commencing at 7:00 p.m.

The second class will be offered on Saturday mornings at 10:00 a.m. with sessions on March 23 and 30 and April 6 and 13.

Participants will create a bonsai to include putting the bonsai in a pot.

Classes will be held at Lam's Nature Gardens, 7973 Tucker-

man Lane, Potomac, MD, in the Cabin John Shopping Center. Please telephone Gary Lam for Registration and Fees at (301) 299-2693.

CHESAPEAKE BONSAI SOCIETY EDUCATIONAL WORKSHOPS

The following is a calendar of workshops offered by the Chesapeake Bonsai Society for Spring 1991. All workshops will be conducted under the guidance of Mr. Steve Choi, a third generation bonsai master.

<u>Month/Date</u>	<u>Beginner Level</u>	<u>Intermediate level</u>
19 March 1991		Cascade Training - material: To Be Announced
16 April		Root Connected Bonsai - material: Jap. White Pine
20 April	Branch Wiring- material: Satsuki Azalea	
14 May	Trimming - material: Cork Bark Elm	
21 May		Propagation by Air Layering, material obtained from the field.
June 22, 1991	Juniors' Workshop Series Subject: Introduction to Bonsai Material: Serissa foetida Time & Place: 10:00-11:30 a.m. at Eastwood's Bonsai	

Juniors age 11 and under must be accompanied by an adult.

All regular scheduled workshops will be conducted at either the Annapolis Library or the Providence Center. For further information telephone Mr. Steve Choi at (301) 266-7336 or (202) 262-8131.

PBA ANNUAL SPRING
SHOW
 AT THE ARBORETUM APRIL 26, 27, 28

Stitched in the center of this issue of the Newsletter is a "POP and POST" announcement of the PBA Annual Spring Show to be held at the U.S. National Arboretum on 26, 27 and 28 April 1991. The Arboretum is open to the public from 10:00 a.m. to 5:00 p.m.

Please remove the "POP and POST" announcement and post it where others can see it, - at work or any public place. By so doing, people who might be interested or curious will realize that there is a bonsai organization in this area. The "POP and POST" announcement is the brainchild of the PBA Public Relations Officer, Tony Meyer.

The Spring Show offers the following:

- * Bonsai and suiseki displayed by PBA member clubs.
- * A bazaar with as many as 10 vendors selling:
Plants Tools Pots Books Etc.
- * Demonstrations on how to create a bonsai:
2 demonstrations per day at 11:00 a.m. and 2:00 p.m.
Jim Doyle from Nature's Way Nursery (see their advertisement in this Newsletter) will do a lecture/demonstration at the 2:00 p.m. Saturday afternoon session.
- * An opportunity to view the National Collection of Bonsai and Penjing including the new North American Collection in the recently dedicated John Y. Naka Pavilion.



- * The National Arboretum's azaleas and rhododendrons should be in full-flower.

TELL YOUR FRIENDS and OTHERS and INVITE THEM to ATTEND

Non-PBA members will be asked, upon entering the PBA exhibit area, to voluntarily make a tax-deductible \$2.00 donation to the National Bonsai Foundation.

A QUALITY SHOW

All PBA member clubs should support the show by selecting and grooming bonsai and suiseki to be displayed at the show.

The following guidelines apply:

- * All trees should be in bonsai display pots or on slabs and not in training pots.
- * Bonsai should be exhibited on suitable stands or wood slabs if available, since this will be an indoor display.
- * Wiring should be kept to an absolute minimum and there preferably should be no wiring. Trunks should not be wired. Shiny wire is a no-no!!
- * Trees that are displayed should be mature enough so that the trunks need not be wired.
- * An appropriate accent plant or accessory should accompany the bonsai and also be on a display stand or wood slab that compliments the stand or slab that the bonsai is on. This does not apply if the bonsai is not on a stand or slab.



DISPLAY ITEMS - DELIVERY and RETRIEVAL

Delivery: To avoid the hectic Friday morning rushing about and confusion brought about by exhibitors bringing

trees just before and even after the Friday morning 9:00 a.m. deadline for bringing in as past years and thus resulting in the show not being ready for the 10:00 o'clock opening, this year:

ALL TREES ARE TO BE DELIVERED ON THURSDAY, 26 APRIL BETWEEN 8:00 a.m. and 5:00 p.m.

Note: Exhibitors may have some concern about leaving their prizes indoors at the Arboretum for the full four (4) days of the show. It is suggested that those individuals make arrangements, where feasible, to have a replacement from another PBA member or from their collection.

Accompanying Information: In order to make up attractive cards containing background information for each of the trees, Russ Kinerson has offered to use his Laser printer to letter the cards. This will result in producing cards with not only uniform but also attractive lettering. PBA member clubs are requested to supply Russ Kinerson with the information below no later than April 22nd. See the section later on that pertains to Coordination for his address, telephone number.

BONSAI and ACCENT PLANTS (in the order below):

* Owner's name and telephone number.

THIS WILL NOT BE DISPLAYED TO VISITORS!

It will be used only in the event that the owner need be contacted.

* Botanical name

* Common name

* Age

* Years in training.

* Source of the material, i.e.

Grown from seed

Air-layered

Grafted

Cutting

Nursery stock

Bonsai in training

Collected

SUISEKI:

- * Owner's name and telephone number which WILL BE KEPT PRIVATE
- * Type of stone.
- * When and where found.
- * Wood used for the display stand.

RETRIEVAL: Exhibitors are to pick up their items on display after the close of the show at 5:00 p.m. on Sunday, April 28th. PBA will not be responsible for items not picked up by 6:00 p.m. on the 28th. Unclaimed items will go into the PBA Auction to be held in May at Behnke's Nurseries.

SPACE ALLOCATION for PBA CLUBS

The tables on which the bonsai are to be displayed are each 6-feet long. The following lists the number of tables presently allocated to each PBA club:

<u>Number of Tables</u>	<u>PBA Member Club</u>
2	Baltimore
2	Bowie
4	Brookside
2	Chesapeake
2	Kiyomizu
2	Meihwa Penjing
4	Northern Virginia
2	Washington



Plan your displays accordingly so as to avoid a crowded or worse yet an over-crowded feeling,- follow the Japanese aesthetic of shibui which involves a careful exercise of restraint to the point that there seems to be room for one more item. Hence plan on 3 and at the most 4 bonsai per table with accent plants so that there is maximum impact to the viewers. PBA clubs are encouraged to make a preliminary layout of where the items will be placed.

If there are any questions or concerns relative to the above, please contact Russ Kinerson, work (202) 475-8915 or home (703) 765-7223.

EMPHASIS SHOULD BE ON QUALITY NOT QUANTITY. If a person's tree does not get into the show, there's always next year.

PBA MEMBER-VOLUNTEERS NEEDED

Help is needed from PBA members in order to produce a successful show. The PBA Annual Spring Show is one event that helps build up PBA membership and in turn enhances PBA's ability to program PBA events and increased membership at the club levels can do the same for the clubs.

Assistance is requested in the following:

- * Helping with setting up the show.
- * Helping with dismantling the show.
- * Taking donations at entrance to the show during showtimes.
- * Acting as monitors of each club's display during showtimes.

COORDINATION: All PBA member clubs are asked to cooperate in soliciting members to volunteer for the above activities. It is advised that each PBA club appoint a member to coordinate the selection of items for the club display and all other actions related to the show including the recruiting of members to assist in the above activities.

The appointed club show coordinator should contact

Russ Kinerson
2705 Boswell Ave.
Alexandria, VA 22306

Telephone: Work (202) 475-8915
Home (703) 765-7223

by 22 April, 1991 with the list of items that the club intends to display along with the accompanying information listed on page 8 plus a list of the names of the volunteers and the times and activities they will participate in.

HELPING WITH THE SET-UP: Setting up the display tables and arranging the display area will take place on:

Thursday, April 25th
Time: 8:30 a.m.

Helpers can report anytime after 8:30 a.m. The earlier the helpers arrive, the sooner it will take to complete the operation. It is anticipated that the set-up phase should be completed by 3:00 p.m.

Volunteers arriving before 10:00 a.m. should use the gate off of Bladensburg Road vice the New York Avenue entrance.

HELPING WITH THE DISMANTLING: This will be done on

Sunday, April 28th
Time: Starting at 5:00 p.m. (show's closing time)

If you're coming to retrieve your item/s on display, you might consider staying to spend a little time in assisting with the dismantling effort.

TAKING DONATIONS AT THE DOOR: This involves manning a table at the entrance to the exhibit, passing out to interested parties information on PBA and the member clubs, and discretely asking that adult visitors contribute \$2.00 which will go to the National Bonsai Foundation. The money then can go to improving and sustaining the National Collection which they have the opportunity to visit without charge.

This station at the door will be:

Manned during showtimes: 10:00 a.m. to 5:00 p.m.
On April 26, 27 and 28.
Morning shift: 10:00 a.m. to 1:30 p.m.
Afternoon shift: 1:30 p.m. to 5:30 p.m.

Volunteers for this activity need only man one shift.

ACTING AS DISPLAY MONITORS: Each PBA club should endeavor to have a member at their display tables during the 10:00 a.m. to 5:00 p.m. hours on April 26, 27 and 28. The monitors serve the following functions:

Preventing vandalism and thievery,
Answer questions from the visitors or direct
them to one who can answer them.
Insure that the plants on display are watered
and misted as needed and in accordance with
any directions given by their owners.

NOTE: Persons who will be at the Arboretum over lunchtime may
want to bring their lunches.

+--+--+--+

PBA ANNUAL MEETING

TIME: 5:15 p.m.

DATE: 27 April, 1991

PLACE: U.S. National Arboretum Administration basement
classroom.

BUFFET: FREE EATS - Chinese carryout.

PBA Members can bring the companion of their choice,- and
not necessarily a PBA member.

Why not plan to spend Saturday afternoon at the Arboretum,-
take in Jim Doyle's 2:00 p.m. lecture/demonstration which is
free, see the show and also the National Bonsai and Penjing
Collection, and shop at the vendors' booths. Then attend
the PBA Annual Meeting and enjoy a free, Chinese dinner.

The PBA Annual Meeting is one where members can:

* Vote for the 1991 - 1992 PBA Officers. Nominees
can be proposed from the floor. The candidates
are:

President - Russ Kinerson
First Vice President - Chris Yeapanis
Educational Vice President - Steve Choi
Secretary - Julie Walker
Treasurer - Jerry Antel

Membership - Cy Mill
Public Relations - Tony Meyer
PBA Newsletter Editor - Jules Koetsch

Hope to see you at the PBA Annual Meeting.

+--+--+--+

INDOOR BONSAI WRAP-UP

Those readers who attended Jack Wikle's presentation,
"How to Grow Bonsai Under Lights", on the 23rd of February
at the U.S. National Arboretum missed an outstanding lecture
and demonstration. In retrospect, Jack made a number of
statements that give an experienced bonsaiist food for thought
as well as others that might be controversial among indoor
bonsai growers.

Jack noted that he has a large number of outdoor bonsai
which he handles like any other outdoor bonsai in his Michigan
winters. Why then bother with indoor bonsai? Jack indicated
as reasons for doing indoor bonsai:----- it's a great hobby,
especially in winter; one does not have to contend with the
extremes of nature - plants being exposed to too intense
summer suns, deep and destructive winter freezes; winds;
animal damage; insect blights; etcetera. Jack pointed out
that by doing indoor bonsai on winter evenings you are
engaged in a pursuit that is not illegal, immoral or
fattening.

Jack Wikle in opening his lecture, recited the litany
found in most indoor bonsai articles and which pertains to
the environment for the bonsai to survive indoors. The
litany contains the following suggestions for keeping the
indoor bonsai alive:

Mist the foliage regularly.
Use a humidifier or cool vaporizer.
Place the bonsai over a tray with gravel and water.
Use a fan for air movement to prevent fungus, etc.
Supplement the fluorescent light with incandescent light.
Insure that the bonsai have a rest period by reducing the temperature of their surroundings to just under 50°F.

Jack Wikle does none of the above and has been growing bonsai indoors for over 15 years!

Jack emphasized more than once when queries emanated from the skeptics in the audience concerning his lighting, that he uses only cool-white fluorescent lights!

PLANT SPECIES

Some of the plant species that Jack Wikle has been successful in growing under cool fluorescent lights are:

Procumbens nana Serissa foetida Ficus
Dwarf Greek myrtle Boxwood Cotoneaster.

In general Jack suggested that any plant material that will grow in Southern landscapes can be a candidate for indoor bonsai.

ILLUMINATION

As mentioned above, the illumination consists of two (2) four (4) feet long cool-white fluorescent tubes. One tube is not adequate. One thought that has crossed **this** writer's mind and was raised by a member of the audience and that is: has Jack ever tried augmenting the overhead lighting with tubes on the sides of the plants. Jack said that he had not tried that.

The plants are positioned so that the tops of each are almost touching the tubes. Various means such as inverted

Pop and Post Poster

Please **pop** this centerfold out
and **post** for your friends to see.

Jack Wi
indoors

Jack
the ske
he uses

PLANT
Some
success

Proc
Dwar

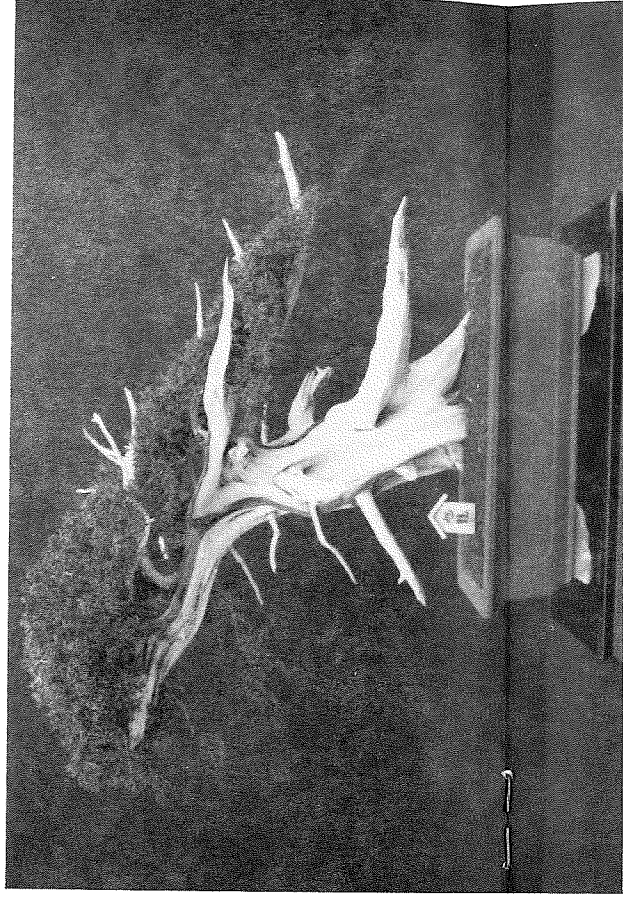
In g
will gr
indoor

ILLUMI
As r
four (4
tube is
writer
and the
lightin
that he
The
almost

POTOMAC BONSAI ASSOCIATION

Spring Bonsai Show

April 26 - 27 - 28
Friday - Saturday - Sunday
10 AM - 5 PM



At the U.S. National Arboretum
3501 New York Avenue, N.E., Washington, DC

- Over 100 bonsai on display • Demonstrations •
- Bonsai and supplies for sale •

Admission free (\$2 donation appreciated)

Annual Bonsai Auction

Saturday, May 25
10:00 - 12:30

Sponsored by *Potomac Bonsai Association* at *Bebnke's Nursery*, Dawn Rose Building, 11300
Baltimore Avenue, Beltsville, MD.

Admission free. Auction is also open to all non-commercial participants who wish to sell
bonsai or bonsai supplies — 9:00 arrival; 15% donation to PBA.

Jack Wi
indoors

Jack
the ske
he uses

PLANT

Some
success

Proc
Dwar

In g
will gr
indoor

ILLUMI

As n
four (2
tube is
writer
and the
lightin
that he

The
almost

Pop and Post Poster

Please **pop** this centerfold out
and **post** for your friends to see.

Potomac Bonsai Association



Fall Symposium '91
US National Arboretum
Sept. 28-29

Marion Larry Roy Steve
Gyllenswan ● Jackel ● Nagatoshi ● Pilacik

Registration Info: PBA Symposium
T Holden/4337 Stream Bed Way/Alexandria VA 22306

flower pots, bricks, small stands or the like can be used under the pots so that different height bonsai can be raised above the table and be close to the tubes.

Plants requiring more light than others should be placed more centrally under the tubes since the light intensity tapers off as one approaches the ends of the tubes. One can follow a system of periodically rotating the plants so that exposure to the higher intensity of the lighting under the middle of the tubes can be shared with all of them.

Jack noted that in surveying literature on the indoor propagation of bonsai that the time period for having the tubes lighted was usually stipulated as between 14 and 18 hours so Jack compromised by averaging the times and uses 16 hours. A timer conveniently turns the tubes on and off.

The tubes are replaced once a year since their light emission intensity decreases over time. Jack advised that the two tubes should not be replaced simultaneously to avoid leaf burn. Replace one tube and allow a week or so to elapse before replacing the second tube.

The 16 hour exposure to the lit tubes is not varied throughout the year to simulate a change in seasons and induce a dormancy period.

The standard, commercially available tow-tube fluorescent fixture that can accommodate two tubes is used by Jack, - no fancy one with a light reflector need be used.

TEMPERATURE

Jack does not take any steps to try to provide a cooler period for the bonsai during the winter so that they go dormant. The basement where he keeps the bonsai has a temperature variation of between 82°F in the summer to 65°F to 66°F in the winter.

SOIL MIXTURE

Jack paraphrased what appeared in Doris Froning's December 1990 issue of "MAME GROWERS of AMERICA". It was his reply to the question raised in the previous issue as to what small bonsai people had been growing for the longest time and the soil mixture they were in. The following is Jack's reply including his "secret soil mix" which

he teased us with by reminding us every so often not to let him forget revealing it to us later in his lecture.

"The media is my 'secret soil mix' which I never reveal unless I'm asked - (you did ask didn't you?):

- 1 part chicken grit (Gran-I-Grit) starter grade
- 2 parts sphagnum peat
- 3 parts calcined clay or Turface (I have used lots of generic cat litter in the past but now purchase Turface, even though it costs more, because it is more consistent in quality. If using kitty litter be absolutely that there are no chemical additives to sterilize the urine or neutralize its odor.)

"My smallest bonsai are:

Cotoneaster microphylla

6 years from a cutting - 8 years in a bonsai pot.
3 inches tall* with a 4" spread.

Pot dimensions: 2½" long by 2" wide by 1" deep.

Juniperus procumbens "Nana"

10 years from a cutting - 7 years in a bonsai pot
2½" tall * with a 4" spread.

Pot dimensions: 2½" long by 2" wide by 1" deep

*From lip of pot."

Jack screens the individual ingredients before mixing them so that the proportions do not change as would be so if the ingredients had been first mixed and then screened. The mix should pass through a 5 spaces to the inch screen but not through a 8 spaces to the inch screen. If one uses the small size Turface and the starter Gran-I-Grit, one need not worry about using the 5 openings to the inch screen to remove larger size particles because those products are very well-graded in size. However, one should sieve the two items to remove fines by using the 8 spaces to the inch screen, window screen or a kitchen sieve.

Two teaspoons of sulfur can be mixed into a one gallon pot of dry soil before using it for acid-loving plants.

CUTTINGS

The soil media that Jack uses for rooting cuttings is:

- 1 part sphagnum peat.
- 1 part vermiculite.

Jack indicated that getting cuttings to root is very easy. Leaves are trimmed off of the cutting except for about 4 to 6 at the end of the cutting. The end of the cutting with a very, very slender stem can be cut-off square with a sharp knife or razor blade. The cutting is inserted in the soil mix and then the pot is immersed in water that is no higher than the lip of the pot. The pot remains in the water until the soil mix is thoroughly soaked. The pot is then removed from the water bath and a plastic baggie is placed over the ensemble to lock the cutting in an air-tight, moist atmosphere. After everyone had taken cuttings left from the demonstration plant, I found two on the table. Using Jack's method, I now have two that have rooted,- tested by gently tugging on the stems to check for resistance to easy removal from the soil.

Subsequent care of the cutting follows that given below for repotting.

POTTING - REPOTTING

Is done on a 2 or 3 year cycle. Wiry roots are removed. Nylon fish-leader is used to tie the plants in the pots. Jack prefers that to using wire and thus avoids the controversy as to what type of wire, copper or aluminum, is preferable as well as giving him a strong yet thin and inauspicious material for the job. Tying down the plant to the pot is essential when the dunking of the pot in water is the way they are to be watered vice from overhead. If the plant is not tied to the pot, the plant will probably lift out of the soil upon being submerged.

In potting a plant into a pot which is shallow and the thick roots cannot be made to lay flat enough in the pot, one can nick the roots so that they can be bent.

Wooden knitting needles work better than thicker diameter chopsticks for working the soil mix around the plant-roots.

As for the cuttings, after the bonsai has been potted,

the pot is immersed in a water bath so that the water just covers the top of the soil. The pot remains in the water until all signs of air bubbles escaping from the soil are no longer visible and the soil mix has fully absorbed all the water it can take.

The bonsai is then sealed in a plastic baggie and in 2 to 3 days it is placed just under the lights. In about one week after the potting, "re-entry" can start.

"Re-entry" is the term Jack has coined for the procedure for removing the plastic bag at intervals,- the essential way to let the plant readjust to the conditions in the room or basement and prevent its demise. Reentry is done as follows: about one week after potting the plant, remove the plastic bag for 1/2 hour and replace it,- the next day for 1-hour,- the next day for 1 1/4 hours and so on until there is no more time left for keeping the bag on the plant.

WATERING and FERTILIZING

Watering and fertilizing are combined under one heading because Jack fertilizes with every watering of the bonsai. His technique makes sense for those plants which are too small to really manage a fertilizer ball on the surface of the soil. Furthermore, the soil mix of Turface, Gran-I-Grits and sphagnum peat has practically zero nutritional value in it for the plant. In fact the writer wonders if it not might be a good idea to do the same for the outdoor plants.

Whenever the plants are to be watered, they are immersed in a water bath and thoroughly soaked. They are then allowed to drain. Next the liquid fertilizer solution is applied. Thus the one caution that should always be observed for using liquid fertilizer,- never apply liquid fertilizer to a plant that has not been watered first.

Jack did not have any preference for a brand of liquid fertilizer,- Peters, fish emulsion, Miracle Grow, etcetera, all are satisfactory. However, the important point is that the solution is a weak solution,- ONE (1) TEASPOON PER 5 GALLONS OF WATER. The liquid fertilizer is applied from the top by means of a small watering can. Jack's solution to getting the right sized stream of water was to epoxy

a small button to the end of the watering can's spout so that the holes in the button regulated the size of the stream.

The tap-water where Jack lives is very hard so he resorts to using water from a dehumidifier or rainwater.

HOW MUCH WATERING?

Jack's philosophy on how to regulate the watering of the bonsai, is to let them dry substantially before watering them. More plants are killed directly or indirectly by overwatering. Jack said that at one of his lecture/demonstrations he had finished explaining when to water, when a man in the audience expressed more succinctly, "As I understand what your saying, you let the soil completely dry out but water it one day before that happens."

Jack has learned to categorize his plants into 3 categories where junipers require the least frequent watering, cotoneaster more frequent watering, and azaleas - the most frequent. How does one check on small plants where probes are too big and difference in the weights of a small plant when wet and almost dry are barely discernable? A finger on the surface of the soil will give some inkling of the moisture content in the soil.

For very small plants, one can try a basting syringe to water them.

GOING AWAY?

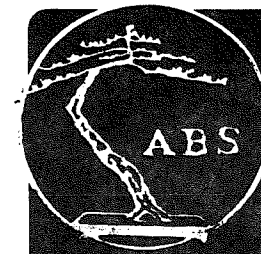
As close to the departure time as possible, thoroughly water the plants and encase the plants completely, - top and bottom, in a plastic bag. They should survive for one week to two weeks.

PEST CONTROL

Jack first dons plastic gloves before handling any insecticides. The insecticides are applied by turning the plants upside down and inserting all of the plant in the solution stopping short of the soil level in the pot. The pot and soil will have to be carefully wrapped to prevent the soil from escaping from the pot.

Aphids:- Liquid Ivory soap, - 2 ounces per gallon of water.
or Malathion.

Fungus gnats- Ignore them.



THE AMERICAN BONSAI SOCIETY

- ☐ Quarterly Journal
- ☐ Four Newsletters
- ☐ Lending Library
- ☐ Slide Program & Video Rentals

Excited about Bonsai? Join Us!

Send name, address and check,
\$18 individual, \$20 couple

Checks should be in US. dollars
and payable to ABS

Mail to ABS, P.O. Box 358, Keene, NH 03431

We Welcome The Opportunity To Show You Our Definition Of Quality

Growing: Japanese Maples
Dwarf Conifers
Pre-Bonsai
(over 7 acres under production)

New Studio: Classes, Tools, Pots, Lanterns,
Stands, Supplies, Plants



1451 Pleasant Hill Rd
Harrisburg, PA 17112

(Sorry, No mail orders)
Open Daily 9-5, Closed Sunday
717-545-4555

Spider mites- These pesky rascals are a big problem once they get a toe-hold on a plant. Anyone who has had any experience with trying to rid themselves of spider-mites knows that at times appears to be never ending. Jack's solution makes sense. First, spider mites lay eggs that hatch in about 10 days. Hence, a one-time treatment with a miticide will kill the living mites but not kill those waiting to be hatched. Hence, the recommended procedure for using a miticide is to apply a treatment every 10 days.

The usual result is that the mites always reappear and one is never completely rid of them. Jack's solution is to rotate between 2 and preferably 3 different miticides. Since it is a known fact that insects develop immunity to a pesticide, the offspring of the first bunch of mites may have developed an immunity to that specific miticide. Thus when they hatch, they can be hit with the second miticide to which they should not be immune. Using 3 different miticides increases the probability of getting them sooner.

Scale insects- For a given quantity of water 1/2 the amount of an oil dormant for that quantity of water is mixed in together with 1/2 the amount of Malathion for that quantity of water.

White flies- Put the plant in an enclosed area with a No-Pest strip.

The best practice is to have no plants touching one another.

STYLING and PRUNING

Jack summed up his approach to styling with the following anecdote about the woodcarver of duck decoys who was asked how he carves a duck from a block of wood. His reply was that he removes everything that doesn't look like a duck. Hence, in styling a tree Jack removes everything that makes the plant not look like a tree.

Jack does a minimum of wiring relying more on directional pruning to shape the branches,- sort of the Penjing approach.

COMING IN APRIL... MID-ATLANTIC BONSAI FESTIVAL

The eighth annual symposium featuring a program of American and International stars with demonstrations, lectures, workshops

- Harry Tomlinson - Master from England, two demonstrations
- Roy Nagatoshi - A popular California bonsai artist, two demonstrations
- Marion Borchers - Tropical plant specialist, demonstration and bonsai critique
- Lynn Perry - Seasoned in horticulture, lecture/demonstration and bonsai critique
- Marion Gyllenswan - Recognized stylist, lecture/demonstration

Saturday night banquet and auction • Expanded sales area

Workshops Will Be Offered By:

- Harry Tomlinson
- Marion Borchers
- Roy Nagatoshi

(Limited to ten registrants each)

Dates: Friday evening, Saturday and Sunday, April 19, 20 and 21, 1991

Place: Marriott Hotel, Saddle Brook, NJ

Cost: Full registration, \$100 including buffet lunch on Saturday; for Friday evening and Saturday, \$70 including lunch; Sunday only, \$40.

Watch for reservation forms. For more information, contact:

Gunnar M. Berg, 73 Van Allen Road, Glen Rock, NJ 07452, 201-652-6844

Mid-Atlantic Bonsai Societies

- Bergen Bonsai Society (NJ)
- Bonsai Society of Lehigh Valley (PA)
- Bonsai Society of Greater New Haven (CT)
- Bonsai Society of Greater New York (NY)
- Brandywine Bonsai Society (PA)
- Great Swamp Bonsai Society (NJ)
- Hartford Bonsai Society (CT)
- Long Island Bonsai Society (NY)
- Pennsylvania Bonsai Society (PA)
- Suffolk Bonsai Society (NY)
- Susquehanna Bonsai Society (PA)
- Wallingford Bonsai Society (PA)
- Yama Ki Bonsai Society (NY & CT)

With all the above now inspiring the writer to once again venture into indoor bonsai,- the last attempt was about 5 years ago. In retrospect, those plants that expired after being moved indoors for two winters from their non-winter existence outdoors on a bench. Perhaps it was the shifting back and forth between outdoors and indoors, or the neglecting to change the fluorescent tubes after one-year of usage. Now armed with Jack Wikle's methodology, the writer is going to gather all those empty small pots that are scattered around the houae, put all the cuttings that I've rooted in them and give it another go.

Jules Koetsch

+++++ _ :++

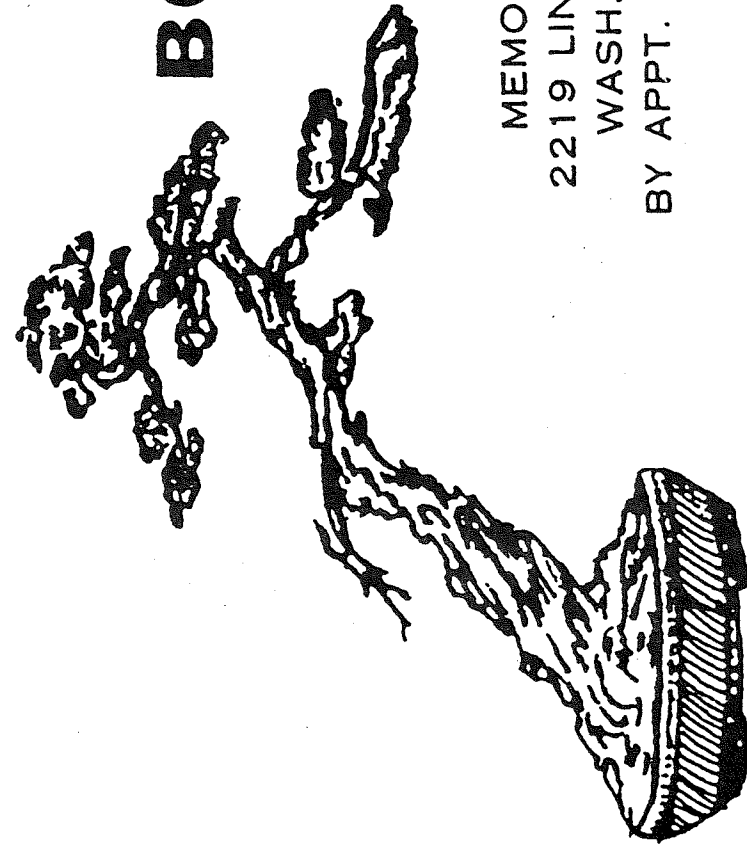
+++++ +++++

THE COMPLETE BOOK OF BONSAI

The last PBA Newsletter contained a letter which Mr. Phung Van Tong received concerning the availability of "THE COMPLETE BOOK OF BONSAI." Since then, Arschel Morell telephoned the editor to announce that Bonsai Associates, Inc., (see their advertisement on page 27) to announce that they they now havethe book in stock.

This very recent book by Harry Tomlinson was reviewed in the October 1990 issue of the PBA Newsletter.

BONSAI



MEMORIAL TREES
2219 LINCOLN RD., NE
WASH., DC 20002
BY APPT. (202) 667-1016
(301) 350-3586



WOLF TRAP NURSERY

VIENNA, VIRGINIA 22180

Your Bonsai Specialists . . .

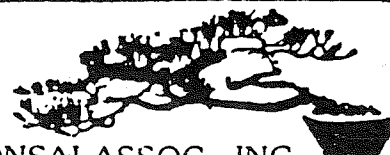
- **STARTER BONSAI**—large selection of both indoor and outdoor material
- **TOOLS**—Masakuni, Kiku
- **POTTERY**—Tokoname, Seto, Hotoku and other imports
- **BOOKS**—many titles to choose from
- **CLASSES**—held at the nursery on the last Saturday of each month,
by Martha Meehan

(703) 759-4244

9439 LEESBURG PIKE (RT. 7)

3½ MILES WEST OF
TYSONS CORNER

HOURS: 8:30 am–6:00 pm Monday thru Saturday
10:00 am–6 pm Sunday



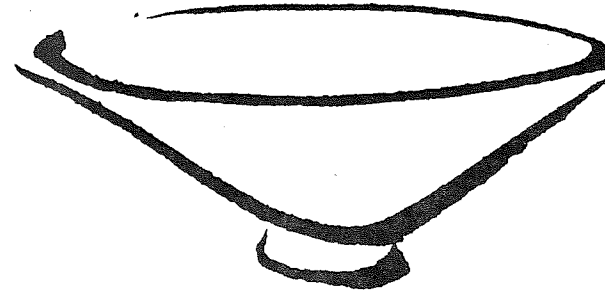
BONSAI ASSOC., INC.
YOUR EVERYTHING FOR BONSAI COMPANY

3000 Chestnut Avenue #106
Baltimore, Maryland 21211
(301) 235-5336

CATALOG \$2.00 REFUNDABLE
BOOKS TOOLS
PLANTS INSTRUCTION
POTS LECTURES, DEMOS
SOIL COMPONENTS
ANNEALED COPPER WIRE

GREENBRIDGE POTTERY & GARDENS

Stoneware Containers
for Food, Flowers, and Plants



5159 Greenbridge Rd
Dayton, MD 21036
301-531-3181



B O N S A I
盆 栽

E & A BONSAI HOUSE

16505 NEW HAMPSHIRE AVE,
SILVER SPRING, MD 20904

(301) 384-9879

ginza
"THINGS JAPANESE"

**BONSAI AND IKEBANA
SUPPLIES**

POTS • TOOLS • BOOKS
VASES • SUIBAN • BASKETS
IRON AND STONE LANTERNS
BONSAI MINIATURES



ginza
1721 CONNECTICUT AVE., N.W. DC
Between R & S — 2 blocks N of
Dupont Circle Metro (Red Line)
OPEN 7 DAYS-VISA/MC
202-331-7991