

POTOMAC BONSAI ASSOCIATION
% U.S. NATIONAL ARBORETUM
3501 NEW YORK AVE. NE
WASHINGTON, D.C. 20002

NON-PROFIT ORG.
U.S. POSTAGE PAID
SILVER SPRING, MD
PERMIT NO. 2359

PBA NEWSLETTER:

Published by the Potomac Bonsai Association, Inc. [PBA], a non-profit organization, in the interests of its affiliate member clubs and societies.

CIRCULATION:

Over 400 internationally on a monthly basis.

SUBSCRIPTIONS:

PBA membership includes 12 monthly Newsletters covered by part of the annual membership dues. Corresponding membership: \$6.50 for 12 monthly Newsletters. Make checks payable to Potomac Bonsai Association and mail to M. Hersh, 102 Devon Ct. Silver Spring, MD 20910.

ADVERTISING RATES:

Monthly rates: 1/4 page - \$5.00; 1/2 page - \$10.00; full page - \$15.00. 20% rate reduction for advertisements that run for 3 or more consecutive months.

ADVERTISEMENTS and/or ARTICLES: send to the editor.

EDITOR:

J. F. Koetsch, 6709 Coneel Ct., Springfield, VA 22152; [703] 589-9372.

SUBSCRIPTION & CIRCULATION: Molly Hersh & Jo Finneyfrock [301] 589-3725, Cy Mill [703] 938-0883

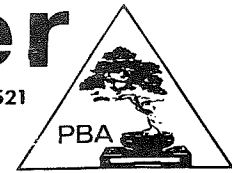
PRESIDENT: FRED MIES; VICE PRESIDENT: Jim Sullivan; Educational Vice President: Bill Spencer; Secretary: Julie Walker; Treasurer: Molly Hersh

POTOMAC
BONSAI
ASSOCIATION

Vol 17 No 11 November 1987

Newsletter

ISSN 0160-9521



CALENDAR OF EVENTS

7 November Saturday

KIYOMIZU (301) 423-8230: WORKSHOP ON INDOOR BONSAI - with speaker. Starts at 2:00 p.m. Telephone for location.

10 NOVEMBER TUESDAY

NATIONAL ARBORETUM, 1:00 p.m.: BONSAI REFINEMENT WORKSHOP. Robert Dreschler, Curator of the National Bonsai Collection, will conduct a Bonsai Refinement Workshop in which he will assist individuals in repotting or refinement of their own bonsai plants, according to seasonal requirements. Participants must bring their own bonsai plant, bonsai tools, wire, container and soil if repotting is planned. The Arboretum will provide no supplies or equipment.

Advance registration is required, and enrollment is limited to five (5) persons. To register, please phone the Education Department at 475-4857. A fee of \$12.00 sent in advance to the Education Department, will be charged. A reduced fee of \$10.00 will be charged to FONA members. All checks should be made out to Friends of the National Arboretum and sent to the Arboretum Education Department, 3501 New York Avenue, N.E., Washington, DC 20002.

Bonsai Refinement Workshops will be held on the second Tuesday of each month. PREREQUISITE: A BEGINNING BONSAI CLASS.

14 November Saturday

NORTHERN VIRGINIA 10:00 a.m. Green Spring Horticulture Center. BLACK PINE will be the subject of Steve Pilarcik's lecture/demonstration. Steve should also have available copies of his new book on Black Pine bonsai which will sell for under \$10. He will conduct an afternoon workshop.

15 November Sunday

BALTIMORE (301) 235-5336: Loch Raven Branch. Baltimore County Library 2:00 to 5:00 p.m. Lecture to be announced.

17 November Tuesday

NATIONAL ARBORETUM 1:30 p.m. RAMBLES IN JAPAN. Gloria Houser, accredited Flower Show Judge, Landscape Critic, and popular garden lecturer, will offer a slide presentation in which she will feature a number of spectacular gardens in Japan. Included in the slide lecture are gardens in Kyoto and Osaka, the Katsura Imperial Gardens, the Shugakuin Imperial Gardens, and Nikko state Park. Mrs. Houser is widely known for her excellent photography and entertaining comments. The program will be held in the Administration Classroom.

21 NOVEMBER SATURDAY

WASHINGTON (202) 583-2676 Please telephone this number to find out if there will be a meeting at the U.S. National Arboretum at 2:00 p.m.

23 November Monday

BROOKSIDE (301) 381-6549. Argyle Community Center. 7:00 p.m. BEGINNERS' CORNER. Regular meeting starts at 7:30 p.m. INDOOR BONSAI MATERIAL WORKSHOP. Arschel Morell will be conducting the workshop using Serissa. This will be a great chance to obtain a nice piece of indoor bonsai material.

28 November Saturday

WOLF TRAP NURSERY (703) 759-4244: 11:00 to 12:00 a.m. LAST HEAVY PRUNING FOR TROPICAL (INDOOR) BONSAI.

5 December Saturday

KIYOMIZU (301) 423-8230: CHRISTMAS POT LUCK DINNER with a video. Telephone for more information.

8 December Tuesday

NATIONAL ARBORETUM 1:00 p.m. BONSAI REFINEMENT WORKSHOP. See November 10th listing above, - same instructions apply.

20 December Sunday

BALUP 65 (301) 235-5336: 5 Woodsyde Place. HOLIDAY COVERED DISH AFFAIR. Contact Helen or Edith for menu contributions. Please put .ENS on your calendar NOW. We always have a good time. 1:00 to 4:00 p.m.

-NOTE-: ANY PBA MEMBER CAN ATTEND
ANY MEETING.

AIR LAYERING TECHNIQUES

Air-layering is a technique whereby roots may be made to grow from a portion of a tree or plant that is above ground. The following two articles, adapted from Japanese books, address air-layering the trunks of trees. However, it is also possible to air-layer branches and turn them into bonsai. The only caution is that the thickness of the part of the tree at the point where it is to be air-layered should be at least about 1 cm or 7/16th of an inch in thickness for optimum success. The two articles indicated the times of the year for air-layering different species and those times, for the most part correspond with those recommended for starting cuttings. (See the February 1981 issue of the PBA Newsletter.)

AIR-LAYERING NEEDLE-LEAFED PLANTS

The following writeup is an adaptation of an article by Makotichi Rinki in the book "Illustrated Techniques for Creating Needle Leafed Bonsai".

The air-layering techniques described herein are applicable to: black pine, white pine, Ezo spruce, shimpaku (Sargent juniper), needle juniper, cryptomeria, cork bark pine, Japanese yew, umbrella yew, red pine, larch, and hemlock.

The intent of air-layering is to correct faults on a tree and obtain a fine bonsai in the future. When air-layering the above species of trees, a higher success rate occurs if the air-layered section is taken such that there are lower branches on the part below the air-layered section.

AIR-LAYERING: TIME PERIOD AND METHOD

March 10th to April 30th is the timespan in which air-layering is best done on the above species of plants except for black pine where May 10th to 31st is the preferred time period.

Of the three methods for air-layering shown in parallel in the accompanying diagrams, the top method yields a higher success rate than the Wire Loop Method. The Preferred Method involves cutting into the bark and through the cambium layer to reach the sapwood in 3 or 4 places. The bark is then peeled upward and muck is pushed under each of the 3 or 4 resulting tabs. The Alternate Method consists of peeling away a ring of bark and putting muck on the bared section.

The Preferred Method is considered to be the best for white and black pines.

The Wire Loop Method is applied, most likely, to hemlock and old trees of Ezo spruce, cork bark pine and shimpaku.

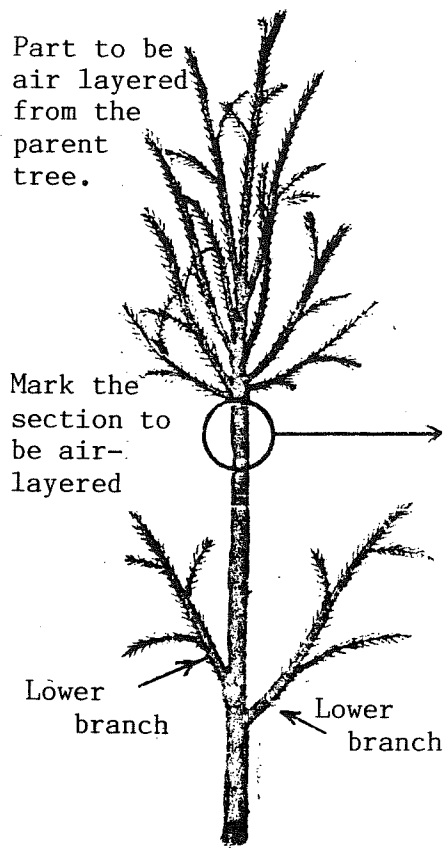
The Second Method is applicable to Cryptomeria, red pine, Japanese yew, hinoki cypress, blue moss cypress (sawara), larch, umbrella yew, and the like, immature trees of black pine, white pine, needle juniper, and shimpaku.

MANAGEMENT

Management or care of the air-layered plant requires that the sphagnum moss be not allowed to dry out. When one can see a large number of thick roots accompanied by hair roots through the vinyl, the air-layered segment can be separated from the host tree.

AIR - LAYERING TECHNIQUES

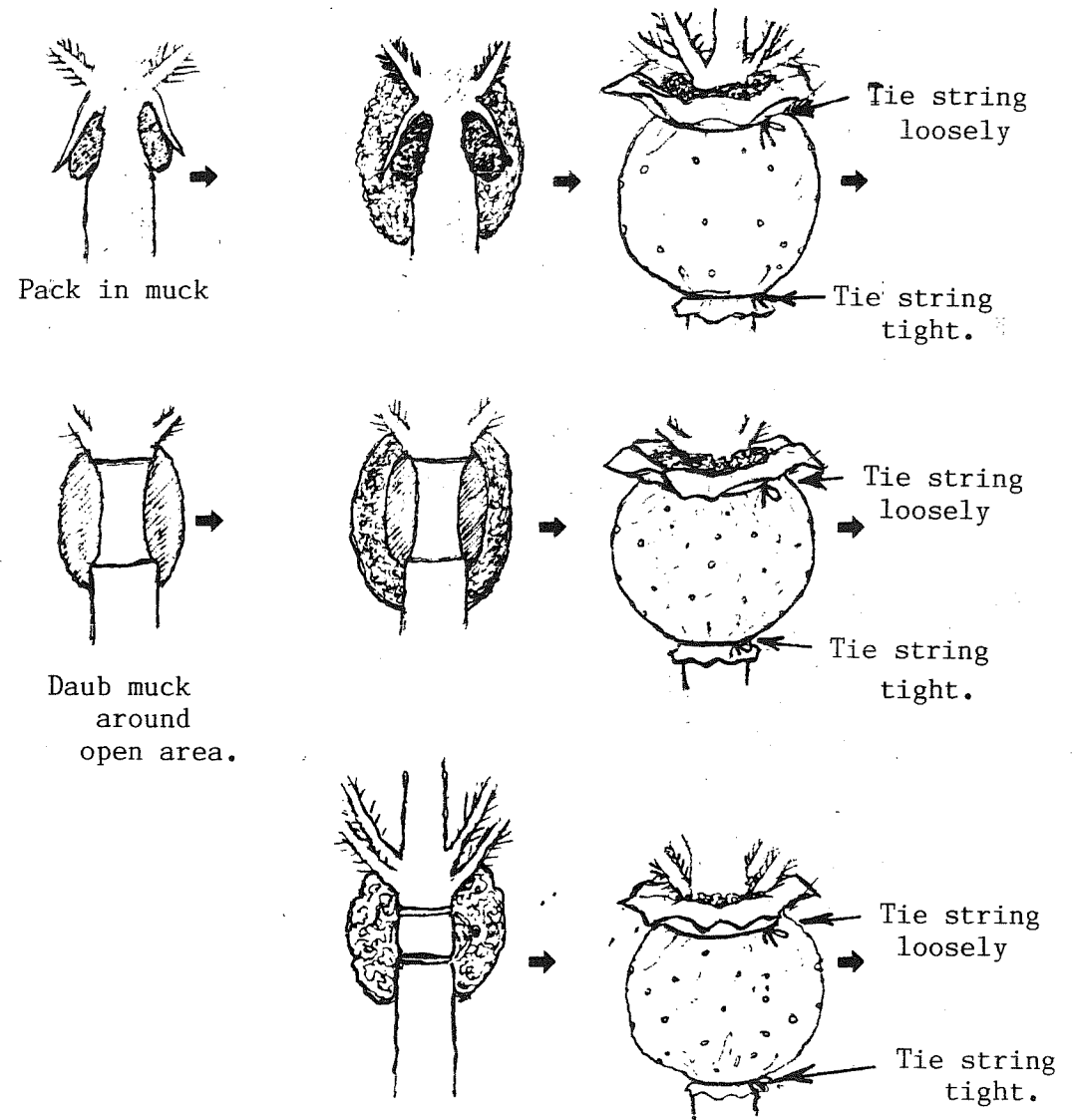
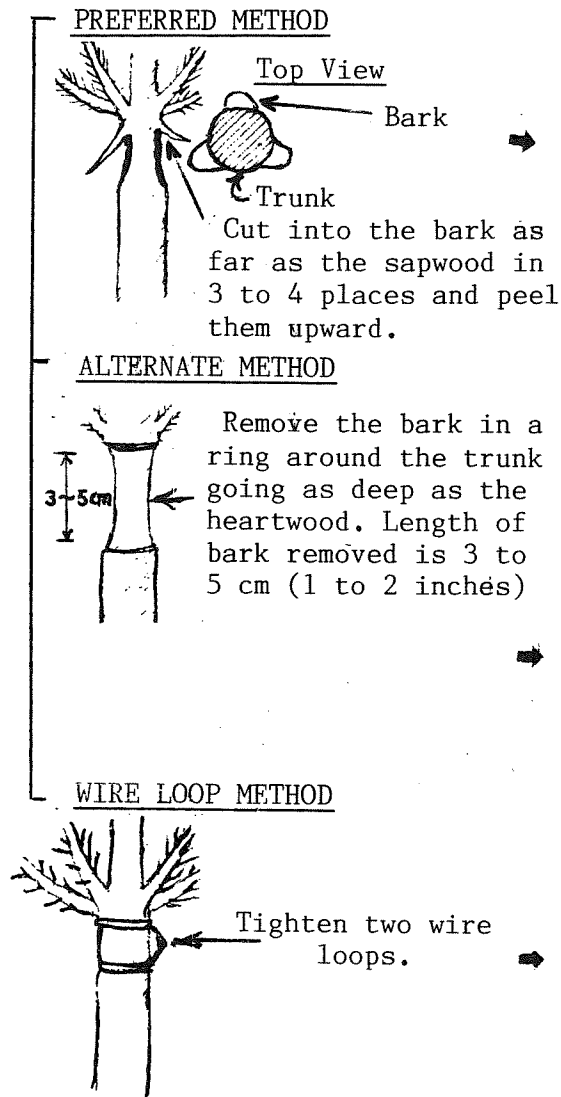
In parallel sequence



Mark the section to be air-layered. In so doing consider the section of the tree to be left below the desired section. It is advisable to have branches on the section below the part to be air-layered.

The success rate for the air-layered section surviving is higher if the lower section that is left behind has branches.

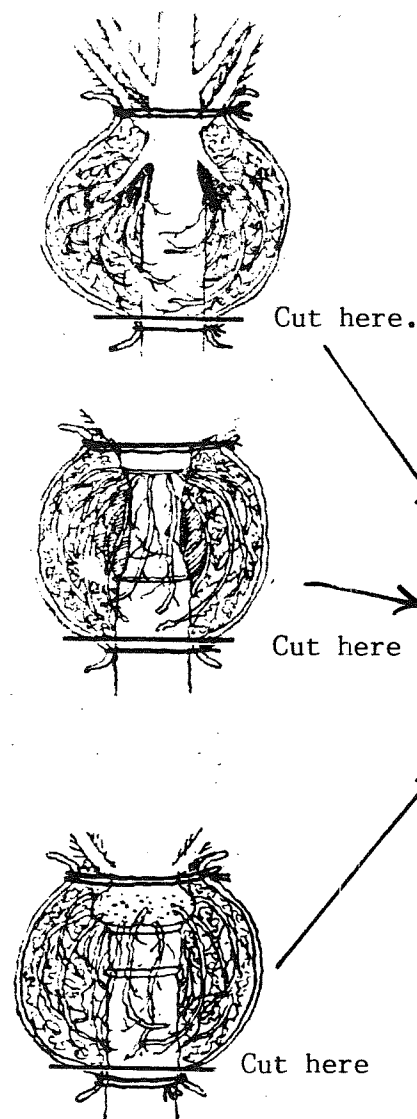
March 10th to April 30th



In the above 3 sketches, sphagnum moss is wrapped around the air-layering section.

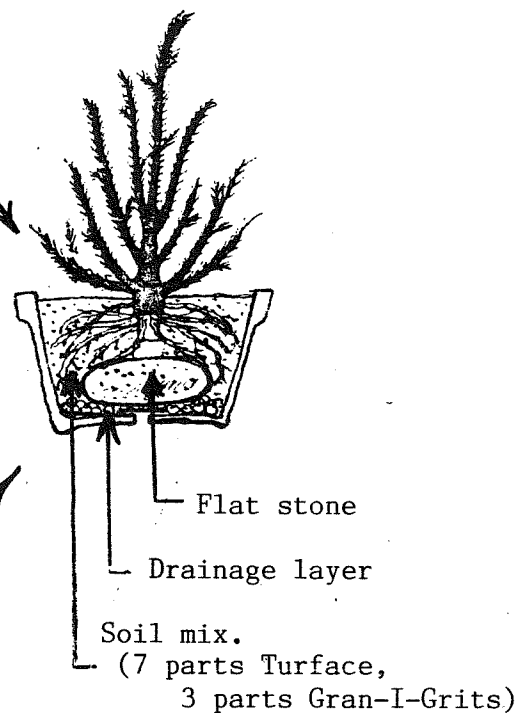
In the above 3 sketches, vinyl with holes is wrapped around the moss.

SEPARATION CUT



POTTING

POT PREPARATION
(Unglazed, shallow pot)



Do not remove the sphagnum moss.
As the roots increase and become
more dense in the pot, the sphagnum
moss will disappear.

When enough fine roots
are evident, immediately
cut and separate the
air-layered section and place it in a pot.

AIR-LAYERING DECIDUOUS TREES

The technique for air-layering deciduous trees differs in some respects from those for needle-leaved trees. The following has been adapted from the article on the subject which was written in Japanese by Shoudan Kato and appeared in the book "Illustrated Techniques for Creating Deciduous Bonsai".

Deciduous plants which can be air-layered include Japanese maple, Keyaki (gray bark elm or saw-leaved zalkovia), trident maple, soro (Japanese hornbeam), Stewartia, beech, Ginkgo, Chinese hackberry, and others.

Air-layering is a quick and easy way to obtain from a tree that is not promising, a more desirably shaped tree for bonsai. First of all, in selecting a plant for air-layering one should pick one that is healthy (full of energy), 5 to 6 years old or more and has at least a 1 cm or 7/16 inch thick trunk or branch at the point where the air-layered part is to be removed.

AIR-LAYERING: TIME PERIOD AND METHOD

The optimum time to start the air-layering process on deciduous trees is any day from June 1st through June 10th. The first step is to select a suitable place for the base of the trunk and then below that point peel away a 3 cm (1 1/8 inch) wide strip of bark down to the sapwood. Then whittle or scrap away a 2 mm (3/32 inch) thickness of the heartwood. This is to insure that there is less tendency for bark to grow back over the bared 3 mm wide ring. Having swept the ringed area clean of any bark and cambium layer, with sphagnum moss that has been thoroughly soaked in water, surround the ring for a length of 10 cm (4 inches) top to bottom. This sphagnum moss is placed in a vinyl, see-through covering formed in the shape of a bag. Manage to keep the sphagnum moss from

drying out and in about 30 days roots will emerge.

CUTTING-OFF TIME

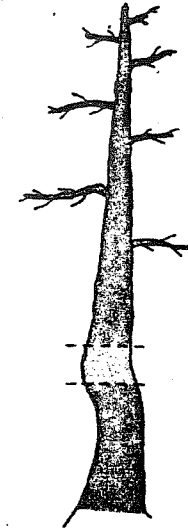
Roots will emerge in 30 days after the start of the air-layering process and in 40 days roots will be visible through the vinyl encircling the moss. When it appears that a sufficient amount of roots have developed, cut the air-layered section from the parent tree. Cut the tree at the point shown in the next to the last two drawings. If not enough roots have emerged in the vinyl bag, do not cut off the air-layered portion but continue to water the moss until enough roots form and then do the cutting.

In potting the air-layered section, do not remove any of the sphagnum moss but place the entire root ball combination in an unglazed pot and secure the plant in place using hemp string so that it will not fall over. Daily watering should follow the potting of the plant and in about one month roots will have extended throughout the pot.

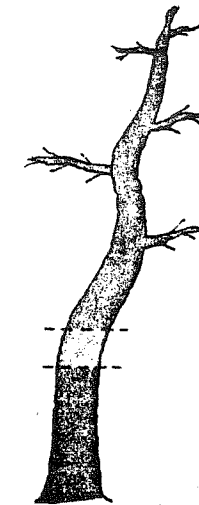
Postscript: The above articles may appear to be redundant in retrospect since the June 1987 issue of the PBA Newsletter contained an article on layering and shouhin bonsai. It is still interesting to compare the various techniques and note that there are more ways than one to "skin a cat" so to speak. Perhaps some of the readers may like to send in to the PBA Newsletter their comments and past experiences so that other readers can benefit from them.

SUITABLE TREE SHAPES FOR AIR-LAYERING

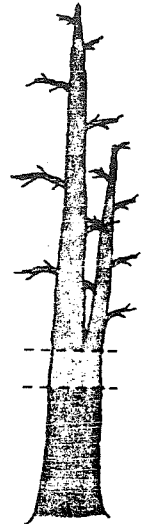
The place to air-layer is detailed below.



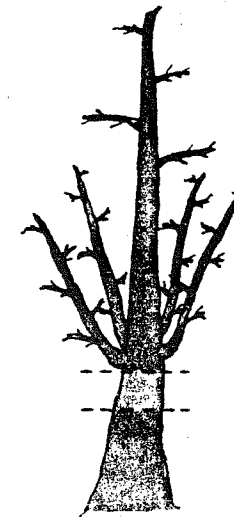
FORMAL UPRIGHT
CHOKKAN



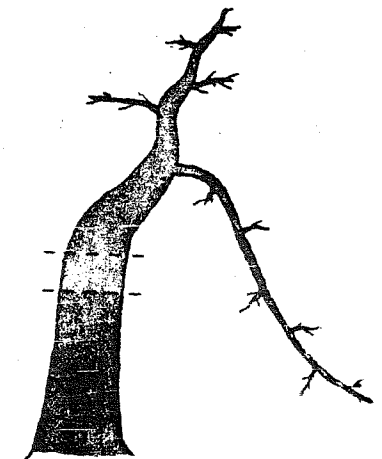
INFORMAL UPRIGHT
MYOGI



TWIN TRUNK
SOUKAN



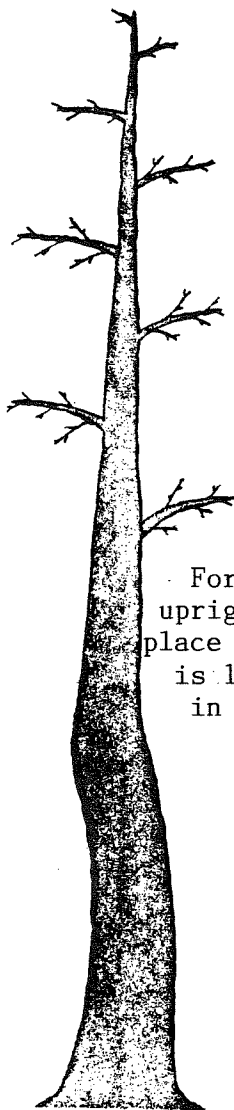
SPROUT STYLE
KABUDACHI



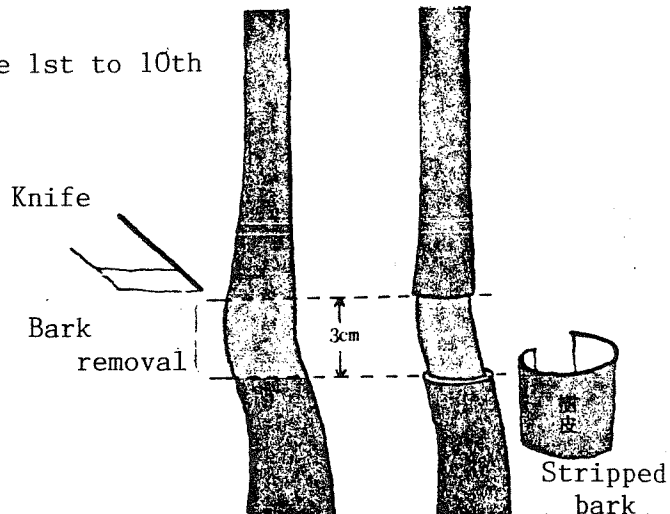
CASCADE
KENGAI

AIR LAYERING TECHNIQUE

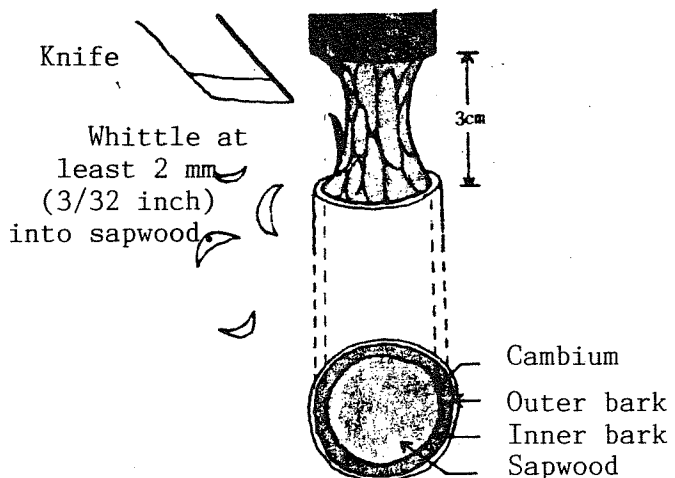
June 1st to 10th



For this formal upright select a place where the trunk is 10cm (7/16 inch) in diameter.

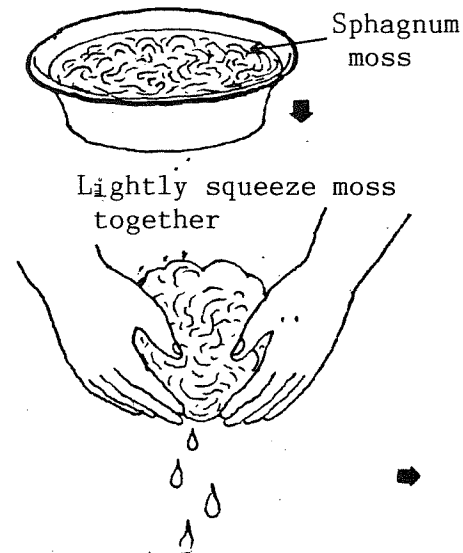


To construct the area where roots will appear, cut into the sapwood and peel off 3 cm (1-1/8 inch) of bark.

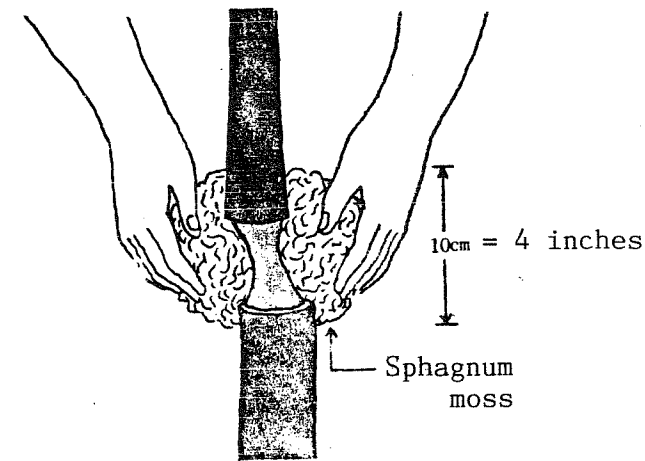


Whittle at least 2 mm (3/32 inch) into sapwood.

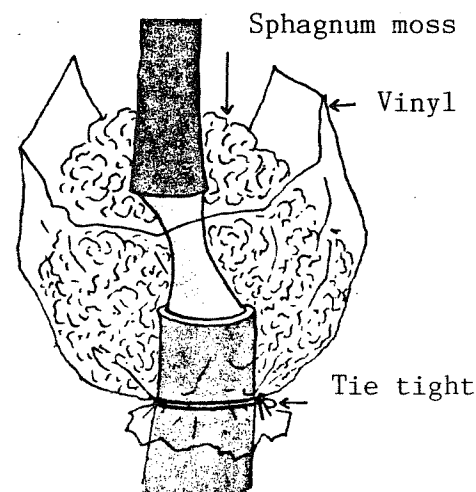
Whittle 2 mm (3/32 inch) from the sapwood after the bark has been peeled off.



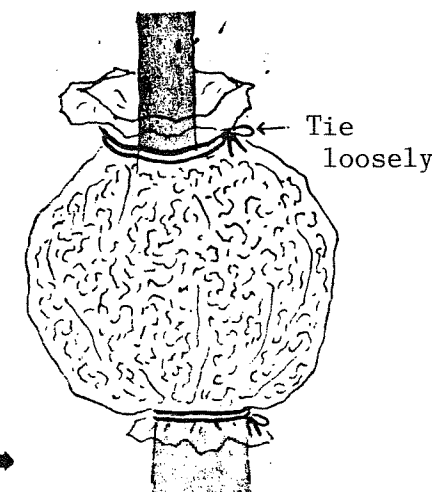
Sequentially, first soak the sphagnum moss in water and then press it together to wring out some of the water.



Before applying the sphagnum moss cut into tree so that the diameter of the cut part is necked down to about one third of the diameter of the tree.



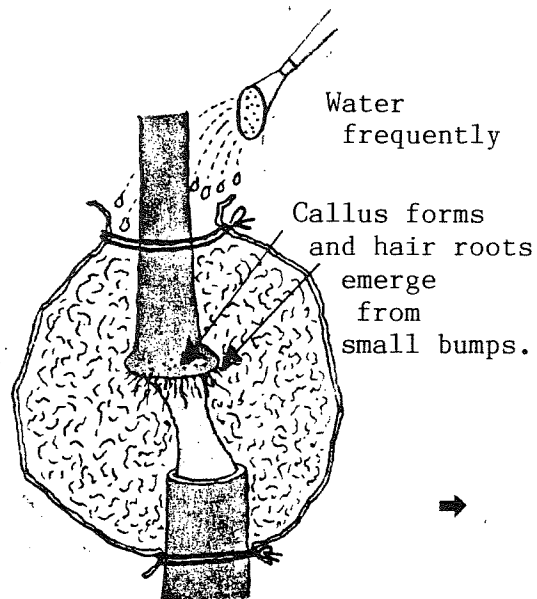
With string, tie the vinyl tight around the trunk to form a pocket and pack in the wet sphagnum moss.



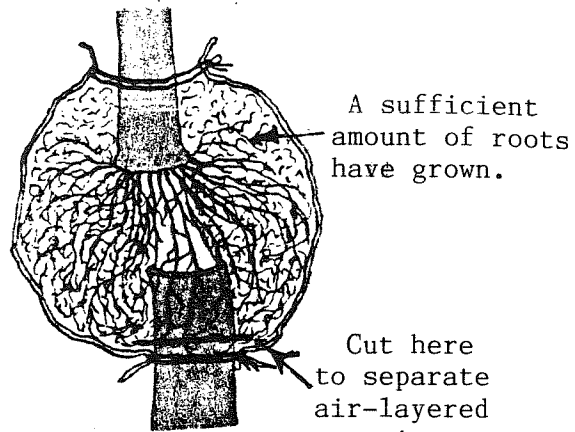
Tie the top loosely so that water can get in when watering or when it rains.

REMOVAL FROM HOST PLANT

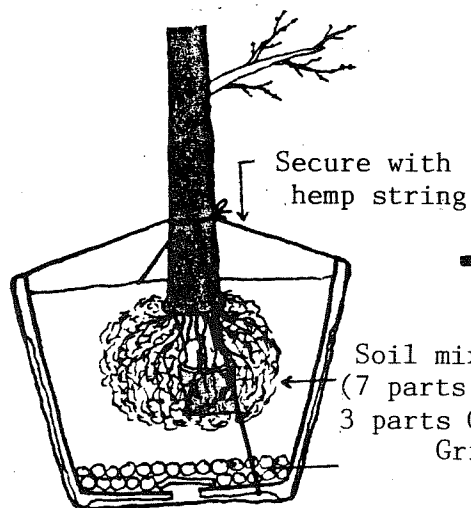
July 20th to 31st



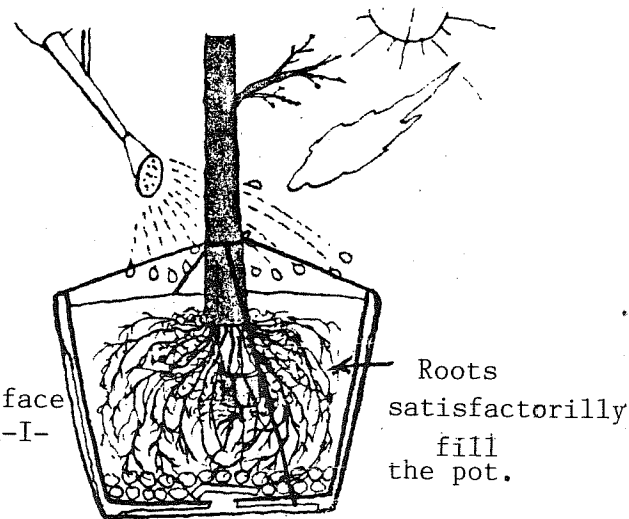
Keep the sphagnum moss moist and roots will start to appear in 20 to 30 days.



Remove the air-layered part from the host tree when the roots fill the moss.



Do not remove the sphagnum moss from around the roots when transferring to the pot.



Provide one-half a day of shade for about 1-month until more roots have developed.

NATIONAL BONSAI FOUNDATION

ACHIEVEMENTS

During IBC'87, Dr. Marc Cathey, Director of the U.S. National Arboretum, had occasion to recount achievements of the National Bonsai Foundation since its beginning in September 1982. He felt the accomplishments, even with a very restricted source of volunteer funds, are truly outstanding.

- o **Organization:** Incorporation of the National Bonsai Foundation with 501(c)(3) tax exemption.
- o **Objectives:** Development of a set of objectives which support a National Bonsai Museum with a bonsai program including comparative bonsai collections, exhibits, education, research, and international exchanges.
- o **Master Plan:** Prepared a Master Plan for a complex of gardens and pavilions, with teaching, display and storage areas for a comprehensive international bonsai program. This complex has been included in the Master plan for the National Arboretum.
- o **American Pavilion:** Designed a pavilion to accommodate the display and storage of a collection of North American bonsai. Working drawings and specifications for this design will be the basis for a construction contract. Named the pavilion for John Naka.
- o **Cost Estimates:** Estimated costs for constructing and maintaining the complex to guide fund raising and to evaluate building bids.
- o **Participation:** Establishment of a collection of exceptional bonsai created in North America -- including John Naka's "Goshin".
- o **Chinese Collection:** Facilitated acceptance by the U.S. Government of 31 Chinese penjing from Mr. Yee-sun Wu of Hong Kong. These trees will be released from quarantine and put on public display with a dedication in the Fall of 1988.

- o Regulations: Initiated liaison with the Agricultural Research Service, U.S. Department of Agriculture, to develop protocols for financing and managing construction of the expanded National Bonsai Museum.
- o Recognition: Staged an international gala to recognize objectives of the Museum within the bonsai community, including 17 Masters of bonsai from Japan.
- o Site: Dedicated the site for future construction of the National Bonsai Museum.
- o Community: Expanded the Board, realigned leadership and involved more of the bonsai community in pursuing the dream.
- o Professionalism: Received funding from a private foundation to hire a philanthropic consultant and Executive Director to organize the many achievements into a consolidated and coordinated plan of action.
- o Donations: Accepted distinguished plants for the National collection or for auctioning to help fund continuing development of the National Bonsai Museum.
- o Funds: Inaugurated the "Committee of Thousands" to raise \$5-million by 1988 to finance the National Bonsai Museum.

Dr. Cathey noted that, as significant as these milestones are, they are still a long way from our objectives. For this endeavor to **soar** and become, not just a place, but a multi-dimensional National Bonsai Museum of research, education, and display, we must find:

Dedicated people
Dedicated national organizations
Agreed on agenda
Contributions of time, effort and funds

Dr. Cathey observed that individuals give freely if they can see their agenda in the project and if they realize that their gift will mean success for the creation and maintenance of a **NATIONAL BONSAI MUSEUM.**

Bill Merritt

The PBA Board of Directors at the November 2, 1987, meeting elected to contribute on behalf of PBA members, \$2,500, to The National Bonsai Foundation. Hopefully others will see their way clear to donate money to help finance this landmark effort. Nowhere else in the world will there be a bonsai complex such as the one to be completed at the U.S. National Arboretum housing not only bonsai displays but teaching and research facilities devoted to the art of bonsai.

On the next page is a sheet for those who can contribute \$1,000. to speed along the attainment of the goal to build the American Bonsai Pavilion. However, CONTRIBUTIONS IN ANY AMOUNT WILL BE GRATEFULLY RECEIVED.

Bill Graham of the Brookside Club clipped the accompanying cartoon from The Rocky Mountain News of October 87.

Thanks a million Bill for the good laugh. I can see that Tarzan would have trouble swinging from one bonsai tree to another.

If any readers come across cartoons relative to bonsai, please send them in so that we all can have a good laugh.

CALDWELL

John Caldwell



**THE
NATIONAL
BONSAI
FOUNDATION**



DEDICATED TO CREATING A MUSEUM OF THE WORLD'S TREES THROUGH THE ART OF BONSAI AT THE U.S. NATIONAL ARBORETUM

THE BOARD OF DIRECTORS

P.O. Box 32377, Washington, D.C. 20007

HONORARY MEMBER

John Y. Naka

OFFICERS

Marion Gyllenswan
Nanuet, NY
Chairman

Frederic L. Ballard
Philadelphia, PA
President

Janet Larnen
Bethesda, MD
Executive Vice President

Randy T. Clark
Minneapolis, MN
Vice President

Felix B. Laughlin
Washington, DC
Secretary

Ruth Lamanna
Arlington, VA
Treasurer

MEMBERS

Marybel Balendonck
Fullerton, CA

Vaughn L. Banting
Metairie, LA

Harold M. Harvey
Orlando, FL

William K. Hashimoto
Concord, CA

Bonnie Martin
Memphis, TN

H. William Merritt
Arlington, VA

John L. Ragle
Laguna Beach, CA

Daniel M. Robinson
Bremerton, WA

F. Chase Rosade
New Hope, PA

Jean C. Smith
Ft. Walton Beach, FL

Gerald P. Stowell
Stockton, NJ

ADVISORS

John L. Creech
Hendersonville, NC

Robert F. Lederer
Washington, DC

Tohiko Saburumaru
E. Palo Alto, CA

Yuji Yoshimura
Bardcliff Manor, NY

Henry M. Cathey
Director, U.S. National Arboretum

Sylvester March
Horticulturist, U.S. National Arboretum

Robert F. Drechsler
Curator, National Bonsai Collection

American Bonsai Society

Bonsai Clubs International

Bonsai Associations of Michigan

Bonsai Societies of Florida

Golden State Bonsai Federation

Hawaii Bonsai Association

Lone Star Bonsai Association

Potomac Bonsai Association

Puget Sound Bonsai Association

Mary Ann E. Orlando
Executive Director

COMMITTEE OF THOUSANDS

TO BUILD AND ENDOW A NATIONAL BONSAI MUSEUM IN THE NATION'S CAPITOL

I/WE WISH TO JOIN OTHER AMERICANS IN ESTABLISHING A NATIONAL BONSAI MUSEUM AT THE U. S. NATIONAL ARBORETUM IN WASHINGTON, D.C. TO CELEBRATE THE ART OF LIVING SCULPTURE, EDUCATION, PRESERVATION, SCIENTIFIC RESEARCH AND CULTURAL EXCHANGE.

Attached is a check in the amount of \$_____ thousand dollars.

(or)

I/We pledge the amount of \$_____ thousand dollars to be paid in 2, 3 or 4 installments on the dates indicated:

9/1/87 1/1/88 4/1/88 7/1/88

I/WE UNDERSTAND THAT AS A MEMBER OF THE "COMMITTEE OF THOUSANDS" MY/OUR NAME WILL BE INSCRIBED PERMANENTLY IN THE MUSEUM. THE NAME SHOULD APPEAR AS FOLLOWS:

(Please Print)

(Example: John R. Doe (or) John R. and Mary E. Doe)

(or)

I /WE WOULD PREFER TO HONOR/MEMORIALIZE THE FOLLOWING INDIVIDUAL:

(Please Print)

(Example: John R. Doe (or) Mary E. Doe)

PLEASE MAKE CHECK PAYABLE TO: THE NATIONAL BONSAI FOUNDATION, INC.

Print Name: _____

Address: _____

ZIP _____

Telephone: () _____ Date: _____

Signature: _____

A Non-Profit Tax Exempt Organization

September 17, 1987

Mr. J. F. Koetsch, Editor
PBA Newsletter
6709 Caneel Ct.
Springfield, MD 22152

Dear Jules:

On page 22 of July 1987 PBA Newsletter under the heading "1987 PBA Auction" I found the following acknowledgement:

PBA thanks Akey Hung for being in charge of the auction and also all those who helped.

The fact of the matter is, I was TOTALLY LOST when I arrived at the Behnke's. I want to thank Chuck Bird, Ann Gemmell, Glenn Greenwell, Ray Koppe, Dick Meszler, Fred Mies, Mike Ramino, Bob Sitnick, Bill Spencer, Jim Sullivan, Godfrey Traemmel and many other PBA members whose names I do not know, for their help.

Sincerely,

Akey C. F. Hung



FOR IMMEDIATE RELEASE

October 9, 1987

FROM: Mid-Atlantic Bonsai Societies

(For more information, contact Emanuel Dannett, 914-723-8874)

COMING IN APRIL - MID-ATLANTIC BONSAI FESTIVAL

The fifth annual symposium of the Mid-Atlantic Bonsai Societies will be staged on Saturday, April 23rd and Sunday, April 24th, 1988 at the George Washington Motor Lodge, Willow Grove, Pa. Sponsoring this event are the following bonsai societies which comprise the Mid-Atlantic group:

Bergen Bonsai Society (NJ)	Hartford Bonsai Society (CT)
Bonsai Society of Lehigh Valley (PA)	Long Island Bonsai Society (NY)
Bonsai Society of Greater New Haven (CT)	Pennsylvania Bonsai Society (PA)
Bonsai Society of Greater New York (NY)	Susquehanna Bonsai Society (PA)
Brandywine Bonsai Society (PA)	Wallingford Bonsai Society (PA)
Great Swamp Bonsai Society (NJ)	Yama Ki Bonsai Society (NY & CT)

Lectures and demonstrations will be presented by John Naka, Los Angeles, CA, Chase Rosade, New Hope, PA and a new Japanese master, Hiroshi Yamaji, Tokyo, Japan. Jeff Jabco, Penn State Agricultural Agent, will lecture on insects and diseases. Workshops, directed by John Naka and Hiroshi Yamaji, will be available on Sunday afternoon, April 24th.

Full registration for the two-day seminar, including a buffet lunch, is \$85 per person, plus workshop and lodging. For Saturday only registration, the fee is \$60 per person and, for Sunday only, \$40.

Registration forms for the symposium, workshops and hotel accommodations will be available soon. In charge of reservations is Gunnar M. Berg, 73 Van Allen Road, Glen Rock, NJ 07452, 201-652-6844.

#



SINCE 1972

WOLF TRAP NURSERY

VIENNA, VIRGINIA 22180

Your Bonsai Specialists . . .

- **STARTER BONSAI**—large selection of both indoor and outdoor material
- **TOOLS**—Masakuni, Kiku
- **POTTERY**—Tokoname, Seto, Hotoku and other imports
- **BOOKS**—many titles to choose from
- **FREE CLASSES**—held at the nursery on the last Saturday of each month, Martha Meehan, Instructor

(703) 759-4244

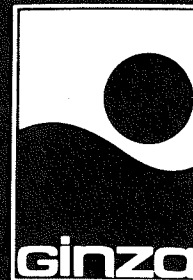
9439 LEESBURG PIKE (RT. 7)

3 1/2 MILES WEST OF
TYSONS CORNER

HOURS: 8:30 am-6:00 pm Monday thru Saturday
10:00 am-6 pm Sunday



BONSAI AND IKEBANA SUPPLIES



"THINGS JAPANESE" 1721 Connecticut Ave., N.W. 331-7991



B O N S A I
盆 栽

E & A B O N S A I H O U S E
16505 NEW HAMPSHIRE AVE.
SILVER SPRING, MD 20904

(301) 384-9879


BONSAI ASSOC., INC.
YOUR EVERYTHING FOR BONSAI COMPANY
3000 Chestnut Avenue #106
Baltimore, Maryland 21211
(301) 235-5336

CATALOG \$2.00 Refundable
BOOKS TOOLS
PLANTS INSTRUCTION
POTS LECTURES, DEMOS
SOIL COMPONENTS
ANNEALED COPPER WIRE