

NON-PROFIT ORG.
U.S. POSTAGE PAID
SILVER SPRING, MD
PERMIT NO. 2359

POTOMAC BONSAI ASSOCIATION
% U.S. NATIONAL ARBORETUM
3501 NEW YORK AVE. NE
WASHINGTON, D.C. 20002

PBA NEWSLETTER: Published by the Potomac Bonsai Association, Inc. (PBA), a non-profit organization, in the interests of its affiliate member clubs and societies.

CIRCULATION: Over 300 internationally on a monthly basis.

SUBSCRIPTIONS: PBA membership includes 12 monthly Newsletters covered by part of the annual membership dues. Corresponding membership: \$ 6.50 for 12 monthly PBA Newsletters. Make checks payable to: Potomac Bonsai Association and mail to M. Hersh, 102 Devon Ct., Silver Spring, MD 20910.

ADVERTISING RATES: Monthly rates: 1/4 page - \$ 5.00; 1/2 page - \$ 10.00; full page - \$ 15.00 .
20% rate reduction for advertisements that run for 3 or more consecutive months.

ADVERTISEMENTS and/or ARTICLES: Send to J. F. Koetsch, 6709 Caneel Ct., Springfield, VA 22152, (703) 569-9378.

PRESIDENT: Richard Meszler (301) 833-9559; **FIRST VICE PRESIDENT:** Fred Mies;

EDUCATIONAL VICE PRESIDENT: Mike Ramina; **SECRETARY:** Jullia Walker; **TREASURER:** Molly Hersh

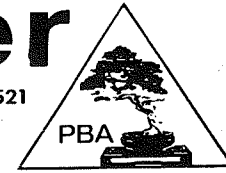
EDITOR: Jules F. Koetsch (703) 569-9378

SUBSCRIPTION & CIRCULATION: Molly Hersh and Jo Finneyfrock (301) 589-3725, Cy Mill

POTOMAC
BONSAI
ASSOCIATION
Newsletter

VOL 17 NO 1 JANUARY 1987

ISSN 0160-9521



CALENDAR OF EVENTS

A HAPPY, HEALTHY, PROSPEROUS NEW YEAR

FOR YOU, YOUR FAMILY, AND YOUR BONSAIC.

- 10 January **NORTHERN VIRGINIA:** (703) 984-2044. Green Spring Horticulture Center at 10:00 a.m. Mr. Norman Bernhardt who was mentioned in the May and December 1986 PBA Newsletters will speak on fertilizers, and their availability. If you desire bulk quantities, it is suggested that you contact Norman prior to the meeting. His number is (301) 270-4111.
- 17 January **WASHINGTON:** (202) 583-2676. National Arboretum at 2:00 to 4:30 p.m. LEARNING TO SKETCH -- Part II A continuation of lessons on how to sketch which began at the Nov meeting. Add tracing paper to the supplies listed in the Nov 1986 Newsletter as items you must have for Part II of this series. Also bring a live tree, preferable one you intend styling in the Spring. Guest Instructor: Arlette Jassel.
- 22 January **BROOKSIDE** (301) 774-9028. Argyle Community Center, Sligo Spring Road, Silver Spring, MD. 7:00 p.m. BEGINNERS CORNER. 7:30 p.m. - The subject of BONSAI STANDS will be explored. Paul Wildisans, a talented and experienced wood worker, and Fred Mies who took a course in woodworking to extend his already bulging bag of bonsai tricks, will be in charge of the program. Barbara Bogash and Arschel Morell from Baltimore will with us to sell pots, tools, wire and other supplies. A good opportunity to buy what you need and covet.
- 1 February & 4 February: National Arboretum. ALL ABOUT COLLECTING PLANTS: BLACK HISTORY FEATURE. Telephone (202) 475-4857 for time and place.
- 21 February **WASHINGTON:** (202) 583-2676. National Arboretum at 2:00 p.m. GROWING MUM BONSAI" This month's program promises to meet a need for instant gratification,- if not instant, at least within a few months. Only special plant

(Continued on page 26)

This is the first copy of the PBA Newsletter which has been generated in part by means of a Radio Shack TRS-80 Model 4 Computer System using the SUPERSCRIPSIT word processing software. This keystone event has moved the publishing of the PBA Newsletter into the modern age. PBA owes a deep debt of gratitude to Cy Mill who so generously donated the equipment and instructions on how to use it and who has offered to serve as consultant when help or instructions are needed. The editor is most thankful to have the word processor capability so that he can eliminate typos and hopefully turn out cleaner and more grammatically coherent copy especially with the Japanese translations. It's working great, thanks a million Cy.

Somehow or other this first issue of the PBA Newsletter in 1987 turned out to be a compendium of advertisements.

In view of the fact that bonsai instruction has also stepped into the modern age with video tapes replacing the old 35mm slide/cassette player instruction media, it seems appropriate to review what is available. Using video tapes as an instructional media appears to have excellent possibilities in that they can be used over and over again to instruct incoming club members, to refresh the memories of the older hands, and also be shown at bonsai shows and the like to attract new members and educate the public.

Considering the above, it might be wise to consider having some of these tapes available at possibly the PBA level for loan to the member clubs. This however presents a quandry as to which tape or tapes would be the ones to have. Unfortunately there is no way one can preview a tape before purchasing it. The only alternative to viewing someone else's tape is to try and select from the advertisements. Advertisements for the following tapes are contained in this Newsletter, - there may be more but I haven't learned of their existence. Anyway, what's stopping a group with a video camera from making their own? You may ask, "How would it be shown in the usual club meeting place where there, most likely, is no VCR and TV set?" The answer to that is, "VCR's can be rented or borrowed and someone can bring a portable TV."

Then again there may be one or two of the readers who has some money left over after the Holiday spending spree and before paying income taxes to want to invest in one or more of them.

Page 3: **BONSAI Art & Horticultural Vol 1 Basic Techniques** by William N. Valvanis. The remainder of the brochure (not shown) indicates that the contents of the tape include *Bonsai Styles & Species *Demonstraion * Pruning-Wiring-Potting *Development & Trimming.

Pages 4 & 5: **MASTERS BONSAI TECHNIQUES** Beginners Video
There are four individual volumes or tapes one each by Marion Gyllenswan, John Y. Naka, F. Chase Rosade, William N. Valvanis

Page 6 **THE BONSAI WORKSHOP** Supervision Japan Bonsai Association.

Page 7: **THE WORLD OF MASHIKO KIMURA**
The artistry of the world-wide famous bonsai magician.

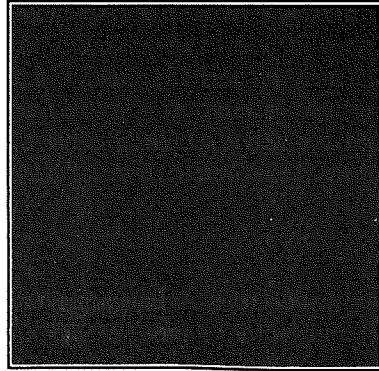
BONSAI
Art & Horticulture
Vol. 1 Basic Techniques

Order Form

\$59.95
Add \$3.00 For Shipping & Handling

Format: VHS _____ BETA _____ PAL _____

Name _____
Address _____
City _____ State _____ Zip _____
Country _____ Telephone _____

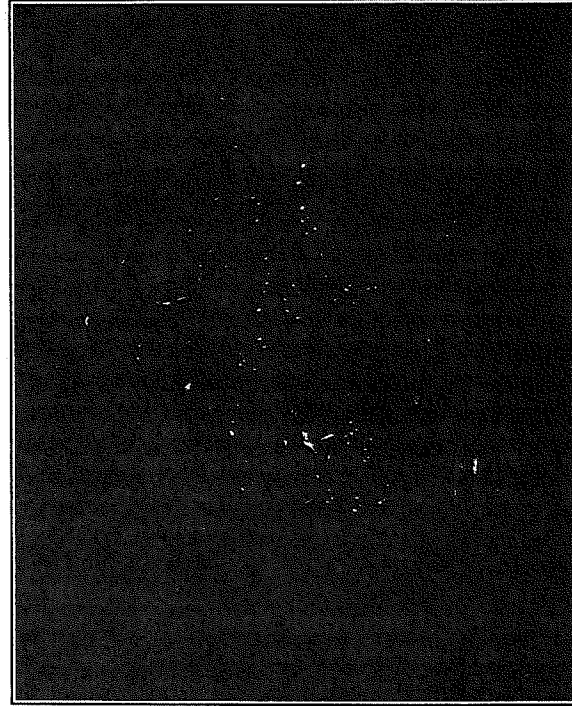


Deciduous Bonsai-
Japanese maple, *Acer palmatum*

Producer
TOKYO EIHO SHA
3-5-5-505 Nakaoki
Kawaguchi-Shi
Saitama-Ken, Japan 332

World Wide Distributor
INTERNATIONAL BONSAI
412 Pinnacle Road
Rochester, NY 14623 U.S.A.
(716) 334-2595

Beginners
Bonsai Video Series



Fruiting Bonsai- Crabapple, *Malus sp.*

BONSAI
Art & Horticulture

Vol. 1 Basic Techniques

**MASTERS
BONSAI
TECHNIQUES**

Order Form

Each Volume \$59.95

Add \$3.00 Per Volume For Shipping & Handling

Vol. 1 _____ Vol. 2 _____ Vol. 3 _____ Vol. 4 _____

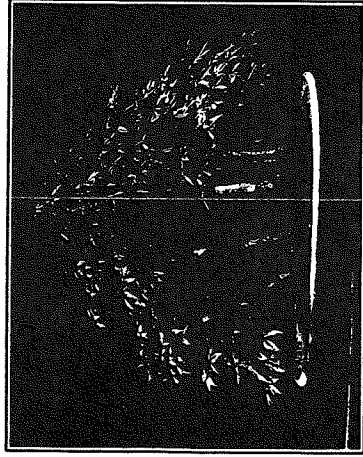
Format: VHS _____ BETA _____ PAL _____

Name _____

Address _____

City _____ State _____ Zip _____

Country _____ Telephone _____



Japanese maple, *Acer palmatum*

Producer

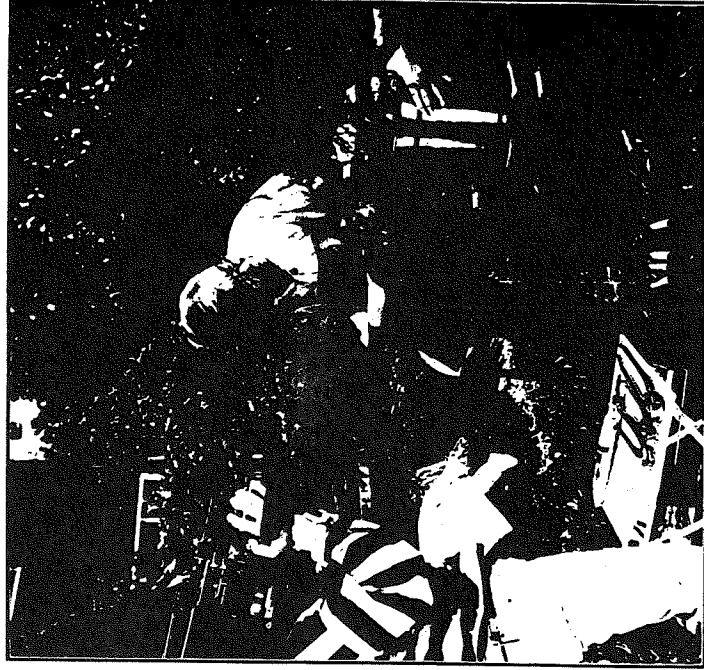
TOKYO EIHO SHA
3-5-505 Nakaoki
Kawaguchi-Shi

Saitama-Ken, Japan 332

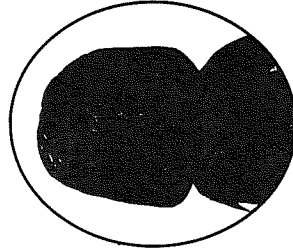
World Wide Distributor
INTERNATIONAL BONSAI

412 Pinnacle Road
Rochester, NY 14623 U.S.A.
(716) 334-2595

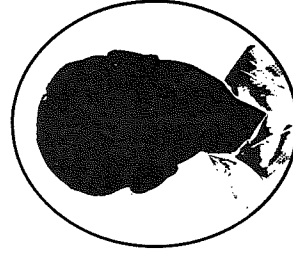
**New
Bonsai Video Series**



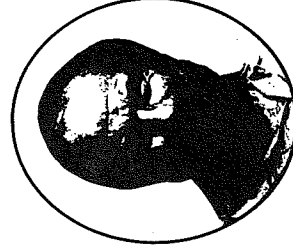
**MASTERS
BONSAI
TECHNIQUES**



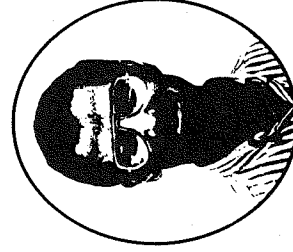
Marion Gyllenswan
President, National Bonsai Foundation
Nanuet, New York



John Y. Naka
President, California Bonsai Society
Los Angeles, California



F. Chase Rosade
Rosade Bonsai Studio
New Hope, Pennsylvania



William N. Valavanis
International Bonsai Arboretum
Rochester, New York

Volume 1

SHAPING TECHNIQUES

F. Chase Rosade
Selecting nursery stock
Pruning trunk & branches
Trimming & root grafting

Volume 2

CARVING DEAD WOOD

John Y. Naka
Creating jin
Carving trunk & branches
Refining dead wood

Volume 3

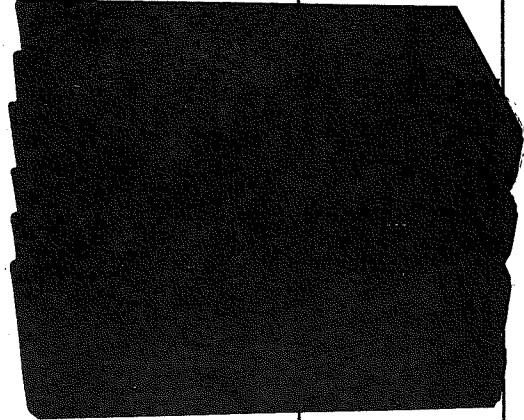
ROCK PLANTING BONSAI

Marion Gyllenswan
Flat rock style
Upright rock style
Boat stone style

Volume 4

GROUP PLANTING BONSAI

William N. Valavanis
Preparing materials
Comifer group planting
Deciduous group planting



\$59.95 Each
World Wide Shipping & Handling
\$3.00 per volume

Each Volume
Approx. 40 Minutes

Available in VHS & BETA (U.S.)
PAL (Europe & Australia)
Please Specify When Ordering

THE BONSAI WORKSHOP

SUPERVISION
JAPAN BONSAI
ASSOCIATION

Everything you need to know about the cultivation and care of bonsai on VIDEO.



The cultivation of bonsai-miniature trees and landscapes-is now practised worldwide. The tradition has spread from Japan and found many devotees among those who admire the unique beauty of this ancient art form.

The Bonsai Workshop series brings to you on VIDEO all the techniques involved in the cultivation and care of various types of bonsai.

A wonderful teaching aid, in English, for bonsai societies and enthusiasts everywhere, this series was made in the home of bonsai, Japan, and adapted for foreign audiences by eminent Japanese bonsai specialists.

The series is available on VIDEO.

The Price: VHS or BETA (one complete set) ¥60,000
PAL or SECOM (one complete set) ¥80,000

THE BONSAI WORKSHOP SERIES

- | | |
|--------------------------------------|-------------------------------|
| No.1. The Basic Principles of Bonsai | No.5. Re-potting and Watering |
| No.2. Cultivation of Bonsai No.1 | No.6. Group Planting |
| No.3. Cultivation of Bonsai No.2 | No.7. Rock-grown Bonsai |
| No.4. Methods of Forming Bonsai | |

Produced by KISHIDA PRODUCTIONS CO., LTD. Tokyo, Japan

Address: 3-23-14 Takaban Meguro-ku Tokyo Japan Phone: 03 (712) 1407 152

THE WORLD OF MASAHIKO-KIMURA

*An elegant brochure, "THE WORLD OF MASHIKO-KIMURA" was distributed at the Bonsai Design Symposium sponsored by Bill Valavanis in Rochester, NY, last September. However, the brochure was in Japanese as is the first issues of the 3 volume video tapes. Bill Valavanis indicated that an English version should be forthcoming. For those who have heard about the sensational impact of Mashiko-Kimura upon the Japanese bonsai community to the point that he earned the nickname "Magician", may be interested in knowing what a translation into English of the brochure might look like. In passing it may be of interest to know that Mashiko-Kimura has been very much in demand in Japan by bonsai owners to restyle their bonsai. In one Japanese bonsai show most of the trees on exhibit had been groomed by Mashiko-Kimura. Mention was made at the above Bonsai Design Symposium that his fee for restyling or grooming a bonsai was around \$2000.00 according to some and more like \$10,000.00 according to others,- you can take your pick but I favor the latter. It probably ranges around those figures depending on the amount of work that must be done.

THE WORLD OF MASHIKO-KIMURA

Page 1: The tapes conform to the video standards for sound recording and photography. The final bonsai video edition will inspire you through the clarity and forcefulness of the photography.

BONSAI VIDEO

The essence of modern bonsai techniques.

THE WORLD OF MASHIKO-KIMURA

Complete Set of 3 Tapes

(Each tape is 45 minutes)

Production: NHK Promotion Service

Planning and Sale: Kindai Shuppan Inc.

Page 2: The world can observe the creator of beauty.

(THE WORLD OF MASHIKO-KIMURA) MEET THE PUBLICATION

Tree Village Mashiko. A small publishing company of a monthly publication (Kindai Bonsai) presented for the first time in the May 1981 issue, the sophisticated, excellent artistry of the bonsai sensation Mashiko-Kimura. Surely the plastic surgery of the magician (Kimura) along with the shock impact of his debut have given birth to his being classified as a superhero and to his right to fame.

Thereafter, this art reformation had opened to the public an unexplored world,- a whirlpool of wonder, excitement and fascination accompanied the nationwide acceptance along with a training of the mind to sense bonsai in this new way. The original ideas started appearing in mature productions of bonsai. Progress in the adaptation of the transfiguration process to heretofore unused raw materials appeared bright and clear and inspired a great number of people.

1982 - October "The Impact of the Challenge of the Unexplored Artform Starts to Modify Work Efforts"; 1984 - October "Acceptance of the Nouveau Artform of the 21st Century",- are subtitles to those times. The Tree Village Mashiko's World "THE CENTER OF MODERN DAY BONSAI" PARTS I,II of the volumes allow one to spend one's time living in that world. Be a follower of the distinguished author not only because of his nationwide fame but also for a better understanding of his artform. Bringing about worldwide attention has resulted in attaining high appraisal from international bonsai artistes.

Pages 3 and 4: VIDEO BIRTH OF THIS BONSAI WORLD FIRST!!

FIVE-NEEDLE PINE BLACK PINE SHIMPAKU

Splendid Plastic Surgery With 3 Favorite Trees Adaptations of a Secret Art

Bonsai Artist

"KIMURA'S WORLD" many exciting and miraculous skills are shown. See the dramatic birth of spellbinding bonsai.

The plastic surgery techniques of the magician fill a void by continuing on from where one's skills have stopped and leave behind the present day bonsai techniques for those of the 21st Century.

These exciting 2 hours and 15 minutes of video tapes provide a permanent source of information.

Japan, having been proud to share the traditional art with the world, is now proud to share this innovative artform.

Characteristics of the Video Tapes

1. This is the first time in the bonsai world that a video series covers the beginner to the experienced person but the wide range of the series' contents are too numerous to mention.

2. Predecessors have chosen to present definite exercises in the traditional art forms. Now be in the vanguard in the development of new art techniques.

3. The "Plastic Surgery of the Magician" which has already attracted the attention of bonsai lovers all over the world, has given him the status of a superstar. This is first grasped and reflected in the manifestation of the bonsai and the skills involved at Tree Village Mashiko.

4. The comprehension of the plastic surgery techniques is made more clearly possible by the natural progression on the tapes in contrast to attempting to do it on magazine pages.

5. NHK Promotional Service put together an excellent staff which after taking and reviewing a 12 minute pilot tape on bonsai imagery, successfully recorded in this new media.

6. The realization of the clear color imagery came about due to the use of broadcasting photography standards.

7. Each volume besides being useful is something that you will derive pleasure from viewing later on, their theme will not grow old, and in a manner of speaking you will be rewarded by the inspiration and beauty that they provide.

Page 6: Date of Issue November 1, 1986

In the beginning the plan is not to sell these through the publisher or record shops. Check with your nearest bonsai garden. Offers from small businesses wishing to sell the tapes are welcome.

The cassettes come in an attractive, sealed case and are wrapped in gold foil cloth.

The cassettes are available in VHS or BETA.

The special fixed price for the 3 volume set is 58,000 Yen.

On time: 4,000 Yen down and 10 installments of 6,000 Yen each.

Shipping cost is 4,000 Yen.

Upon receipt of the 4,000 Yen downpayment, the entire set will be sent at once.

NOW, CAN THE MATTER OF SEEING BONSAI ART
IN-BEING IMPROVE YOU?

PRINCIPAL CONTENTS OF ALL VOLUMES

(Editor's note: The texts for the 3 video tapes printed in the original Japanese are presented on the facing pages. Since these sections which were extracted from the advertisement, contain the most detailed explanations of what each of the 3 tapes contain, the Japanese is presented for those who can read the Japanese and thereby do a better translation than that given below.)

Volume I FIVE NEEDLE PINE

COMPLETION OF PARTIALLY FINISHED BONSAI

The beginner in bonsai sometimes uses difficult to understand or inexpensive textbooks,- the experienced person has acquired, by other means, the advanced stage techniques. This video is presented to the public so that they come to enjoy applying wire and become skilled in it.

When wire is called upon to do drastic shaping (of the bonsai), the inexperienced person is gambling with the outcome of the bonsai,- yet, the fact is that everyone should gain experience and that in itself is a matter of serious concern. This cassette and the next one contain information on how to wire pines so that the trees are evidence of miraculous conversions into "splendid bonsai".

By viewing these video tapes, one will understand the significant operations necessary to make bonsai of quality, and the results of your drastic styling/pruning techniques will show rapid improvement.

*Branch bending techniques are covered. Also the selection of wire,- how to locate and how tight to press it to be effective. Definite procedures to amend or alter the wiring are covered.

*Included are basic fundamentals concerning techniques for removing the unnecessary branches and also improvement by partly rotating a branch and filling a void with a branch.

*What is the opposition to removing a branch? Resolving the techniques to be used depends on the placement of other branches along the trunk with one option being to shift branch position.

*Is there a reason for not removing the "gate" branch?

*How to remove wire is explained in the last part of the volume.

第一巻・五葉松

針金かけのすべて

初心者にはわかりやすいテキストとして、経験者にはより高度なテクニックの習得へ。盆栽作りが楽しくなる針金かけの技術を公開する。

針金による整形は、盆栽を趣味とする愛好家にとつて、誰もが経験することであり、最大の関心事でもある。この五葉松では二本の異なる素材を用いて、針金だけで「こんなに素晴らしい盆栽ができるのか？」と、驚異と共感を抱かせるような樹姿に変えてみせる。このビデオを見た日から、針金の必要性と、その目的、意味を理解して作業ができ、あなたの整形技術は大いに進歩を遂げるであろう。



- 枝引きの技法について。針金を絞る効果的な位置を選ぶ。それが更なる段階的修正を可能とする。
- 基本的な不要枝も、半回転の応用法で空間を埋める有効枝に変わる。
- 仲間外れの枝ができたらどう対応するか？他の枝や幹を頼らず、一本の枝を動かし決める法。
- どうしても切れない門枝を見せないコツは？
- 枝を下げる時は？針金を巻いて下げるな、下げて巻け。

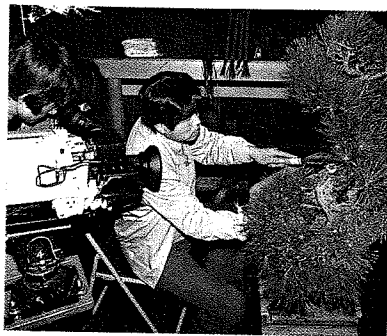
第二卷・黒松

名樹をつくるコツ

まさにこれがプロの感覚と嘆息の洩れる改作、茫然とした素材から引き出されていく美点、名樹へと変貌する過程を詳細に紹介していく。改作構想の段階から新たな正面を捉えるための、鋭意な作者の審美眼は注目に値する。

従来四面角度からの分析も、単に水平的な検討にとどまらず、垂直的な観点からの評価も加え、必然的な正面を浮かびあがらせるのみならず、それを超えた美点を表現しようとする。すでに、この時点で植付け角度も定められ、作者の練磨された美的感覚の世界を垣間みせる。

こうした樹格向上のプロセスは、鮮明な映像で見られる者を納得させ、それは、あなたが自らの愛樹を見直し、名樹への限りない可能性と夢を広げることができるであろう。



Volume II BLACK PINE

THE "ROPES" " (KNACK) FOR MAKING TREES OF DISTINCTION

Acquiring this knack or knowing the ropes for making fine bonsai definitely causes one to escape from the sensitive feelings and grief associated with the extensive risks in trying to extract the good points from raw material. This detailed presentation shows how to proceed in the transfiguration to trees of distinction. After adapting the ideas and steps captured in this fresh/new approach, - the new approach, which sincerely follows the aesthetic senses of the author, will give you valued powers of observation.

Heretofore examination (of the tree) simply stopped with analyzing (the tree) from all sides and from a point on-level with the tree, - the angle of view remained confined to one associated with finding the vertical angle for the tree and the necessity to find the front. But there is merit by going beyond that by a glimpse at the world wherein the author exercises specific aesthetic intuition.

In order not to agonize over the progress (or lack thereof) concerning your trees, you must first concede to being able to visualize a clear image of what the tree will eventually look like. Look again at your favorite tree and a fact will become evident that the dream for a distinguished tree has only a remote possibility of becoming a reality.

*For an old tree, filling out the tree with branches is not always a necessary or important limitation. However, if the decision to prune is delayed because of convenience, the path to (developing) a distinguished tree is closed.

*Deciding on a new front? Particulars on how to proceed are based on the author's individuality in expression and composition.

*Even if there is an idea of what branch to remove, it is a good point that the idea should be in keeping with maintaining the tree's shape.

*Convert the plant to have a professional look! If it were not possible to visually go back to the beginning, how can one accomplish the equivalent?

■古枝、太枝、必ずしも重要とは限らない。切除への決断が遅れたために、名樹への道が閉ざされていた。

■新正面はどう決定するか？作者の個性表出と総合的な判断に至る経緯。

■枝はどのようにも動かせると想定し、可能な限りの美点を強調する樹姿を構想せよ。

■これがプロの植え替えだ！見えなかつた根のトラブルにどう対応するのか？

Volume III SHIMPAKU (Juniperous sargentii)

THE CHALLENGE IN SUCCESSFULLY CREATING MIRACULOUS ADAPTATIONS.

More than once in this volume, raw materials are employed which have trunks within certain size-ranges. It is known fact that garden plants, garden shrubbery do not in themselves have any merit to become distinguished bonsai which will put you in awe (unless you do certain things to them). The answer to a sensible limit to the height of shimpaku is demonstrated based on an innovative technique to indicate the amputation point on an unexplored trunk (a trunk which in part has shari). And after the destiny of the tree has been so determined, the limits that can be reached in the art of roughening the wood are shown.

There is the aggravating choice as to the percentage of the trunk to be split. Capture with unhindered clarity, spots of pronounced severity that excitedly impart certain feelings, and in so doing, come upon the grandeur of the drama of diligently following the birth of a bonsai. The resurrection of shimpaku as a result of surgical operations, the resulting shapes to be seen reflecting the aesthetic senses if the author, and the point where magnificent bonsai start appearing are specifically found in the world of "KIMURA" and the essentials of his art. Of all these three exciting volumes, this volume on shimpaku is the climatic ending. Hence, with the capability for limitless reruns of the video tapes, you will have eternal references.

*The secrets for shrinking a tree to a smaller size after amputating the shari trunk are preserved and presented to the public.

*The lifeline - what is the proportion between the two parts (live and dead), and what is the length of the interval between the tip of the tree and the root?

*The lifeline and the two parts,- how much of the thick heartwood/sapwood can be shaved off in respect to the millimeter thick cambium/bark layers is shown. The use of an electrically driven blade is first presented to the public!

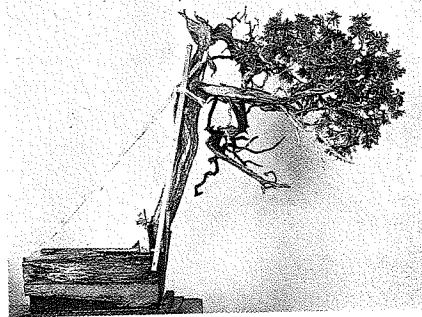
*Is that tree for real? Surely do not the difficult, beautiful transfigurations of the tree shapes and forms evoke words of wonderment?

第三卷・真柏

驚異の大改作に挑む

これまでに一度も手が加えられていない巨幹の素材を使用。植木、庭木としての価値もなく、ましてや盆栽の名を冠されることもない。常識的な樹高限度をはるかに越える真柏に対し、幹(舍利部)の切断という前人未踏の革新的な技術により、樹命を左右するまでの限界におよぶ荒技を見せる。

チェンソーが唸る、幹が割り裂かれる。臨場感を伝える激しい現場音を伴った鮮明な映像が、改作変貌の過程を克明に追い盆栽誕生への壮大なドラマを展開していく。施術後の驚くべき真柏の蘇生、その後に見る姿こそ、作者の美的感覚を反映した、華麗なまでの盆栽創出、まさに世界の "KIMURA" が披露する真髓の技であり、全三巻の感動がこの真柏のクライマックスで極まるのである。そして、限りない余韻が、あなたに永遠のリフレインを誘うことであろう。



- 舍利幹切断から樹高縮小の秘技を全公開する。
- 生命線が割り裂かれて二分される、長い距離を経た先端の根は？
- 二本の生命線はミリ単位の厚さまで削られる。電動刃先の初公開！
- ほんとにこの樹が？まさに驚異の言葉なくして形容し難い見事な変貌の姿とは？

KINDAI SHUPPAN COMPANY, leading the contemporary bonsai world, send you a hot message through a new medium..... that is;

The epoch-making Bonsai Video
“THE WORLD OF MASAHIKO KIMURA”

— The Artistry of the world-wide famous bonsai magician —

MASAHIKO KIMURA; his marvelous techniques and talent have been featured in our monthly magazine CONTEMPORARY BONSAI (Kindai Bonsai) and the special issues. He is well-known as “the magician” and his magic brings us to the unprecedented bonsai world. Kimura attracts and excites the world bonsai fanciers by his magic. Now he is highly estimated in the world as a bonsai artist. He keeps researching new methods and skills and showing us his excellent sense of beauty.

To make you experience his outstanding magic, we produce this bonsai video with clear and impressive pictures. This video, separated 3 volumes, interests both beginners and professional growers, featuring three of most popular species, black pine, five-needle pine, and shimpaku juniper. It enables you to see his successive motions and understand the techniques easily.

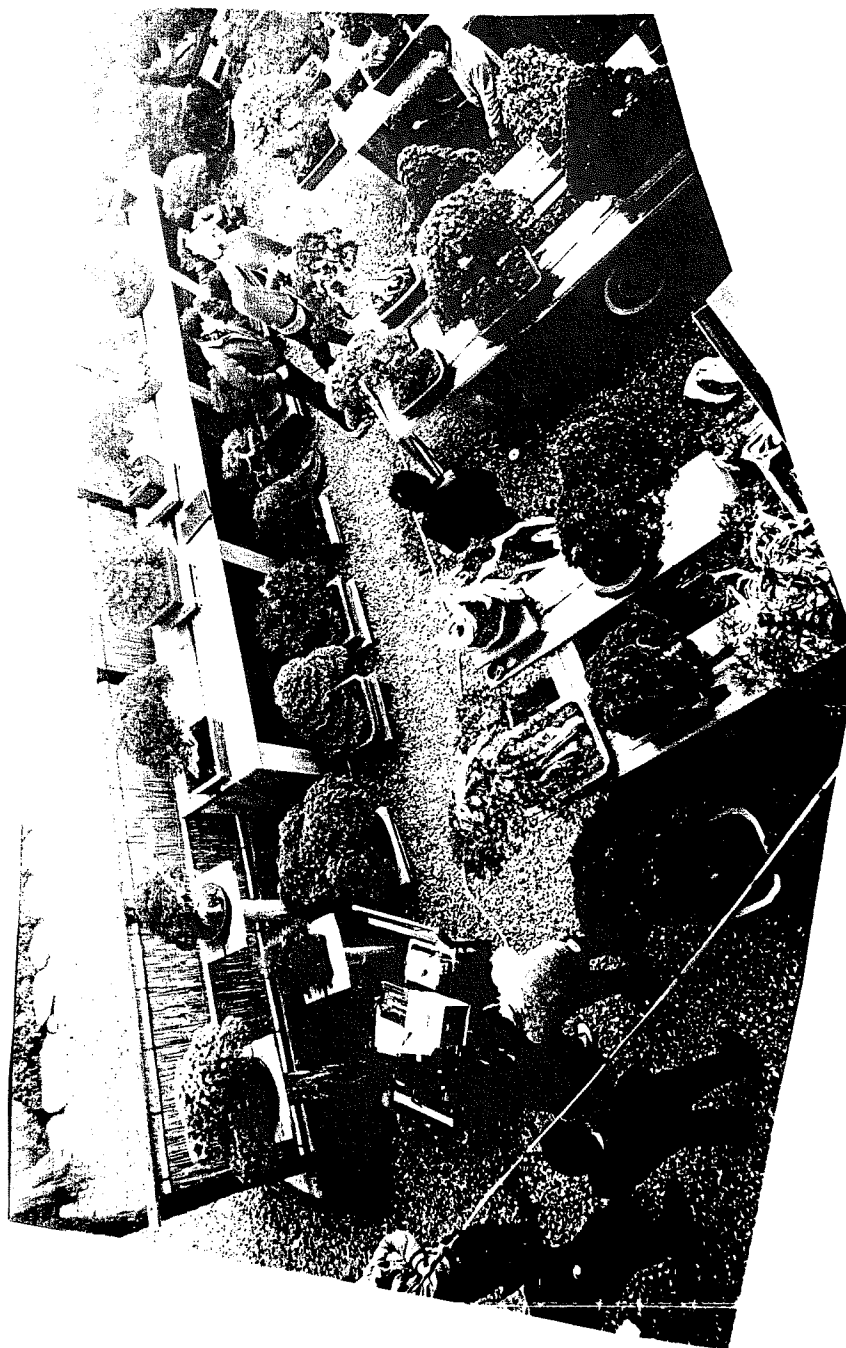
Travel to Kimura’s unforgettable, sublime world. We hope you spend your time in enjoying this bonsai video.

Bonsai Video
“THE WORLD OF MASAHIKO KIMURA”

Three volumes, (45 minutes each) in Japanese,
Production: NHK Promote Service
Plan and Publication: Kindai Shuppan Inc.
¥65,000 (sea mail postpaid)

Please order now:
Kindai Shuppan Inc.
107 Higashi Hiei-cho Nishi 9-jo Minami-ku
Kyoto, 601 JAPAN

U.S. agent
William N. Valavanis
412 Pinnacle Road Rochester, New York 14623
Tel. (716) 334-2595



TREE VILLAGE MASHIKO

ANNOUNCING

A WINTER BONSAI RETREAT

"The Florida conference on literati and cascade"

You are invited to attend an advanced bonsai weekend in Florida in February. Designed to appeal to those who wish in-depth study of a single facet of the art, it will also provide the opportunity to explore the exciting and beautiful natural byways of west central Florida, to take tours of several bonsai nurseries and collections and of course to enjoy the splendid beaches and other vacation opportunities of Central Florida.

Participants will have the opportunity of studying bonsai by immersion and of workshop activities of a level heretofore unavailable. Basic knowledge of bonsai is understood. The Conference will study the literati and cascade styles (and their interesting and close relationship exclusively). An elite group of vendors will be present, offering unique buying opportunities not normally available. There will be a high level exhibit of bonsai. Finally, after the Conference, participants will be mailed the Conference Proceedings, including the text of all programs.

THE TOPICS

An explanation, in depth, stylistically, environmentally and genetically of the cascade style with slides and illustrations.

A definition, similarly, of the literati style

The relationships between the literati and cascade styles

Apical dominance - how to use it and how to subdue it

Some compositional considerations of cascade and literati

The use of driftwood in cascade and literati

Whether or not to develop a vegetative apex - primary, secondary

The literati grove - a specialized branch of the art

A demonstration of literati styling

A demonstration of cascade styling

The art of formal display of literati and cascade

The unspoken element of the art

Advanced branchwork: primary and detail, and how to achieve those dramatic steeply descending branches

The history and philosophy behind the literati style

Choosing a pot for literati and cascade style bonsai

A round table tree analysis session of the exhibition trees by all of the speakers at the Conference.

THE SPEAKERS

John Y. Naka • Marion Gyllenswan • E. Felton Jones

Ted Guyger • Marian Borchers • Cliff Pottberg

Then, on Sunday afternoon, serious workshops, featuring *Juniperus squamata prostrata*, trained specifically for the Conference over a period of years. The workshop is free to all Conference attendees; the reasonable materials fee will vary depending upon the size of material you wish to work with: Small (\$7.50), literati or cascade; Intermediate (\$25.00), literati or cascade; Masterpiece (\$125.00)

Your materials fee reserves your choice of material in the order in which payment for each workshop is received. There will also be a workshop for those who wish to and can bring in their own finished bonsai for a tree analysis session.

The conference will be held at the Admiral Benbow Inn in Tampa. The room rate is extremely reasonable; \$45/single; \$49/double.

THE DATES ARE FEBRUARY 27 - MARCH 1, 1987

For further information, contact Cliff Pottberg or Mike Kling at The Ranch Nursery, (813) 856-3378, or Marc or Marian Borchers at The Bonsai Garden, (813) 988-5844.

The registration is \$175, with a 20% discount until January 1. You may reserve a place with a \$50 deposit.

____ Yes, here is my deposit of \$50; please reserve my place.

____ Please send me more information about "The Florida Conference on Literati & Cascade".

Name _____ Telephone _____

Address _____

City _____ State _____ Zip _____

Send to: Florida Bonsai Retreat, P.O. Box 5204, Hudson, Florida 33567

For reservations, contact the Admiral Benbow Inn, 1200 N. Westshore Blvd., Tampa, Florida 33607; Telephone (813) 879-1750

(Continued from the previous page)

There is a new bonsai conference to attend. Done differently than other study opportunities in bonsai, it is called the "Winter Bonsai Retreat" and will be held in Tampa, Florida, the weekend of February 27 through March 1, 1987. Sponsored by Cliff Pottberg, a founding member of the Potomac Bonsai Association before he moved to Florida, it is designed to offer significantly deeper learning experiences in bonsai than are normally available.

The intent of the Conference is to completely cover a specific segment of the art in as much depth as possible. The programs will build on each other throughout the weekend, surpassing mere technique to study the art of the art, and beyond. This first year, the title is "The Florida Conference on Literati and Cascade."

Here is a complete listing of the programs and the speakers, and the order in which they are scheduled:

Friday, February 27

A definition, in depth, stylistically, environmentally and historically of the cascade styles with slides and illustrations. Presented by Marian Borchers.

A definition, similarly, of the literati styles. Presented by E. Felton Jones.

The relationships between the literati and cascade styles, genetically, environmentally and compositionally. Presented by Cliff Pottberg.

Apical dominance; how to use it and how to subdue it. Presented by Pierre Kaufke.

The major compositional considerations of cascade and literati. Presented by Cliff Pottberg

The use of driftwood - jin, shari and uro - in cascade and literati styles. Presented by Marion Gyllenswan.

Whether or not to develop a vegetative apex - primary and secondary. Presented by Marian Borchers.

The literati grove - a specialized branch of the art. Presented by John Y. Naka.

Choosing a pot for literati and cascade style bonsai. Presented by Ted Guyger (the after-dinner speaker).

Saturday, February 28

A demonstration of literati styling. Presented by Cliff Pottberg.

A demonstration of cascade styling. Presented by Marian Borchers.

The art of formal display of cascade and literati. Presented by E. Felton Jones.

The unspoken element of the art. Presented by Cliff Pottberg.

Advanced branchwork: primary and detail, and how to achieve those dramatic steeply descending branches. Presented by Marion Gyllenswan.

The history and philosophy behind the literati style. Presented by John Y. Naka.

Choosing a pot for literati and cascade style bonsai. Presented by Ted Guyger after dinner on Saturday evening.

Sunday, March 1

Sunday will start with a tree analysis session in the morning featuring all of the conference's speakers in a round table discussion. They will analyze all the excellent bonsai on exhibit at the conference.

Then, on Sunday afternoon, serious workshops, done differently than most. The workshop is free to all conference attendees; the materials fee will vary depending upon the size of material (*Juniperus squamata prostrata*) you wish to work with:

small (\$7.50) literati - first session led by E. Felton Jones

" " cascade - first session led by Ted Guyger

Intermediate (\$25) literati - first session led by Marlon Gyllenswan

" " cascade - first session led by Marian Borchers

masterpiece (\$125) literati - one session, led by John Y. Naka

There will also be a workshop featuring already styled bonsai in the literati or cascade style for those who wish help with their own bonsai and can bring their own trees. Led by Cliff Pottberg

Each workshop will be limited to 10 people. The choice of piece for each workshop is on a priority paid basis. In other words, paying your materials fee reserves your choice of material in the order in which payment for each workshop is received.

In the workshops, there will be no requirement to work on the material; rather, participants are encouraged not to, unless they feel the need. Memory markers for which branch to cut, where to place front, etcetera, will, of course, be provided, as well as a sketch of each tree by the artist leader. Not working on the plant material provides each participant with the opportunity to watch and listen to each tree's discussion, and, for that matter, to join in.

All materials have had prior pruning and training toward bonsai design, and, whether allowed to cascade freely or staked upright, they have been trained specifically for this conference.

Additional sessions will be held if demand requires, and as material is available. There will be only one session of the masterpiece literati workshop, however.

In addition to the regular programs and workshops, informal after-hours discussions will be led by several of the conference leaders and other teachers and will feature a round table format in which all participants are welcome to voice their opinions, ask questions, bring up problems; in short, everything pertaining to an old fashioned serious bull session on literati and cascade bonsai.

After you register, a package of well-explained, self-guided tour routes will be sent to you, outlining additional bonsai opportunities for you to enjoy before or after the conference. You will have detailed for you routes of some of the marvelous byways of west central Florida with many beautiful models for bonsai. There will also be directions to famous bonsai collections including the one at Epcot Center, bonsai nurseries, arboreta and botanic gardens of Florida. For example, starting your trip one week early will allow you to visit the famous Hatsume Festival of Morikami Park in DelRay Beach. There will even be listings of tourist attractions and shopping opportunities for spouses in Tampa and St. Petersburg.

The Conference will be held in the superior meeting facilities and accommodations of the Admiral Benbow Inn on Westshore Boulevard in

Tampa. Only a block from Interstate 275 and near the Tampa International Airport, direct limousine service is available.

Following the Conference, attendees will be sent the Proceedings of the Conference. Included will be:

- The text of all Conference presentations
- Photographs of the bonsai on exhibit
- Slides and illustrations used in the programs
- Photographs of the programs
- A roster of participants
- Speakers' bibliographies

There will be a sales exhibit area. The vendors have been chosen carefully to provide you with unique buying opportunities not normally available. They will include:
Bonsai Garden - Borchers' Nursery: large pots for specimen bonsai, masterpiece Trident Maple and Podocarpus and other large bonsai material.

Bonsai Associates: unique pots, an extensive list of publications.
Fugetsu-en Bonsai: collected materials, bonsai supplies.

George Gray: antique and unique mame bonsai pots, oriental bonsai stands and oriental art and antiques.

Ted Guyger: mame and shohin bonsai pots by one of America's top non-commercial bonsai potters.

Mike's Bonsai: large, well-trained and collected specimens, and more finished bonsai.

MJS stands: magnificent American bonsai stands, comparing well to the best Japanese, by Matt Sadowski.

The registration cost of the Conference is \$175, with a 20% discount until January 1. This includes all the following costs: admission to all workshops, programs, Saturday night buffet, sales exhibition, bonsai exhibition and after-hours discussions. Spouses may attend the Saturday night buffet for only \$15.

Registration is limited. For that reason, we can only offer a full refund in the event of cancellation until February 1. After that time there will be a \$50 nonrefundable cancellation fee.

If you wish further information, please call The Ranch Nursery, (813)856-3378, or The Bonsai Garden, (813)988-5844.

SHELVES —NEW— for **SASH WINDOWS**

DAYLIGHT FOR YOUR INDOOR BONSAI!
SHELF SPACE FOR ANYTHING!



INSTALLS AND REMOVES
WITHOUT TOOLS INSTANTLY!
NO HOLES - NO SCREWS!
TOP SASH OPENS & CLOSES
WITH SHELF IN PLACE.

- Strong Anodized Aluminum Hangers
- Do-It-Yourself Assembly
- Uses Window Width Boards (1 x 6, 1 x 8 or 1 x 10)

Unavailable Anywhere Else
UNIQUE - EXCLUSIVE - US-MADE
Patent Pending

For Info Send \$2.50 (Credit to Order)
Or send check for
HANGER KIT incl. INSTRUCTIONS
Please specify upper or lower (sill) shelf
Sill-type fits almost all horizontal sash windows

KIT \$13.95 each + P&H \$2.50 (No P&H on two or more KITS)
30-day money-back guarantee. You must be satisfied

ACT CO., Dept. BN7/1 13921 ESWORTHY ROAD
GERMANTOWN, MD. 10874

COMING IN APRIL MID-ATLANTIC BONSAI SOCIETIES

The fourth annual symposium of the Mid-Atlantic Bonsai Societies features a cast of major artists, speakers and workshops. Lectures and demonstration are scheduled by each of the following:

- Yuji Yoshimura
- Toshio Saburomaru
- Vaugh Banting
- JIM Barrett
- Plus workshops by Yoshimura and Barrett

Lectures on bonsai will be presented by:

- Lynn Perry
- Steve Pilacik

Dates: April 25th and 26th, 1987

Place: Ramada Inn, North Haven, CT

Cost:
Full registration: \$75. plus lodging.
Saturday only: \$55; Sunday only: \$35.

Watch for reservation forms.

For more information write:

Mid-Atlantic Bonsai Symposium
Box 1060
Secaucus, NJ 07094

Bergen (NJ) Bonsai Society

Long Island Bonsai Society

Bonsai Society of Greater NY

New Haven Bonsai Society

Great Swamp (NJ) Bonsai Society

Pennsylvania Bonsai Society

Hartford Bonsai Society

Yama Ki Bonsai Society (NY & CT)

PUBLIC BONSAI AUCTION of the MURIEL R. LEEDS BONSAI COLLECTION

for the benefit of

The National Bonsai Foundation

10:00 A.M.

Saturday, March 14, 1987

U.S.NATIONAL ARBORETUM

3501 NEW YORK AVENUE, N.E.
WASHINGTON, D.C. 20002

The following two pages describe the forthcoming Public Bonsai Auction of the Muriel R. Leeds Bonsai Collection for the benefit of the National Bonsai Foundation. Some of the readers already know about the Muriel R. Leeds Collection either by personal contact or through the book: Yoshimura School of Bonsai COMMEMORATIVE ALBUM Marking 25 Years of Bonsai Instruction, The Muriel R. Leeds Collection by Yuji Yoshimura. A limited edition of 500 was sold in 1976. It goes without saying that if you're into bonsai you have read and hopefully own a copy of the book THE ART OF MINIATURE TREES AND LANDSCAPES by Yuji Yoshimura and Giovanna M. Halford, and you know of the bonsai master Yuji Yoshimura's skill as a bonsai artist. This skill is reflected in The Muriel Leeds Collection and it is without doubt that the trees to be auctioned-off are among the finest bonsai in this country. r

Public Bonsai Auction of the Muriel R. Leeds Bonsai Collection

for the benefit of
The National Bonsai Foundation

10:00 A.M.
Saturday, March 14, 1987

U.S. NATIONAL ARBORETUM
3501 NEW YORK AVENUE, N.E.
WASHINGTON, D.C. 20002

The National Bonsai Foundation is proud to announce the public auction of the Muriel R. Leeds Bonsai Collection, Saturday, March 14, 1987 beginning at 10 a.m. Proceeds from this auction will be used to help in the funding of a pavilion for American Bonsai on the grounds of the U.S. National Arboretum.

The Artist Mrs. Leeds, of Southport, Connecticut, is a graduate of the Yale School of Fine Arts and

Cypress; Trident Maple; Pitch Pine; Dragon's Eye Pine; Nishiki Cork Bark Pine and Kingsville Boxwood. Plantings represent a variety of bonsai styles. Containers present a interesting variety. Many are antique or semi-antique.

In addition to bonsai in the Leeds Collection, the auction will also include a special selection of pre-bonsai stock. Many in bonsai containers, and all shaped and trained.

a well known artist and painter who has exhibited her work in galleries nationwide. In 1964, Mrs. Leeds became involved in the art of bonsai and has since created a remarkable collection of world class bonsai representing a variety of styles and materials.

Her very generous gift of these bonsai for auction by the National Bonsai Foundation represents a unique opportunity for bonsai enthusiasts. Never before have trees of this caliber been offered for sale in such numbers. Auction of the Muriel R. Leeds Bonsai Collection is a landmark event and will be the largest and most valuable bonsai auction ever held outside of Japan.

Several of the most outstanding trees in the collection will be kept at the Arboretum for future display in the proposed American Bonsai Pavilion. The Muriel R. Leeds Collection represents one of the oldest and most outstanding private bonsai collections in the United States and includes more than fifty old and very high quality trees, many in superb containers.

The Trees Bonsai to be auctioned include fifty-plus plants in training as bonsai from 25 to 50 years. Plant varieties include Mugo Pine; Japanese Black Pine; Shimpaku Juniper; Five Needle White Pine; Dwarf Hinoki



The Auction Catalog Persons interested in bidding may do so by attending on the day of the auction or by submitting a written bid by mail. An auction catalog is currently being prepared and will be available shortly after January 1, 1987. The catalog will include photographs and descriptions of the auction material as well as the necessary bid forms. Catalogs are available at a cost of \$2 each, by writing: National Bonsai Foundation, 3501 New York Avenue, N.E.,

Washington, DC 20002. Please send check or money order payable to The National Bonsai Foundation.

Auction Preview A special Auction Preview of the Muriel R. Leeds Bonsai Collection will be held at the U.S. National Arboretum, on Friday, March 13, 1987 from 6:30 p.m. to 9:00 p.m. Auctioneers for the sale of the Leeds Collection will include: Keith Scott, Chase Rosade, Dr. David Andrews and Randy T. Clark.

Hotels The Days Inn, moderately priced and newly refurbished, is 3 blocks from the Arboretum. Reservations can be made by calling 1-800-325-525.

Loews L'Infant Plaza is relatively reasonable and close to the Mall. Call 1-800-223-0888.

(Continued from page 1)

material (cultivars) is suitable for "mum" bonsai. Catalogues will be available for taking a group order that is planned for Spring delivery. Be present to place your order. Guest: Charles R. Hendry.

26 February **BROOKSIDE:** (301) 774-9028. Argyle Argyle Community Center, Sligo Spring Road, Silver Spring, MD. 7:00 p.m. **BEGINNERS CORNER.** 7:30 p.m. - Program on "**REFINEMENT**". Janet Lanman will give a program on refinement. Janet, also one of our members who has had many years experience in Bonsai and a lovely collection of trees to prove it, is also a volunteer with the National Arboretum. She has worked for 10 years with the National Collection. This program will help you visualize your trees years from now and show you how to insure that they are healthy and beautiful.

From the Washington Club.

The November Newsletter announcing the program for the month began with "If you ever wished that you could sketch your tree and consider different styling possibilities before you cut your first branch, then the November meeting...is for you." Had I not been present at the November meeting, I would have had a hard time believing that one's artistic talent in sketching could improve so rapidly. Some members already had the ability to sketch, but most of us considered ourselves kindergarteners when it came to drawing. It was with the absolute beginners that the dramatic results occurred. Those of us who have never developed beyond the ability to draw a stick man suddenly realized that we could sketch the trunks of trees that were used as models. Budding Pecassos or Wyeths we are not, but better tree stylists we are intent on becoming. Our next lesson will be on how to style from a sketch before cutting the first branch. Can't think of a better way to have an idea of how the tree will look. Just think, if the "cut" branch does not produce the desired result, it can always be put back.

GREAT NEWS

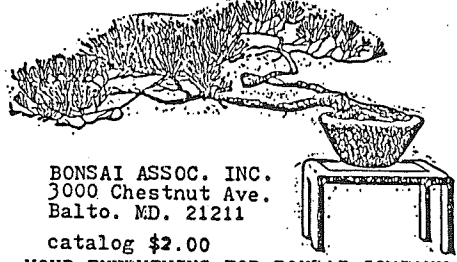
Bill and Norma Merritt's daughter and son-in-law are recovering from severe injuries which they received in AMTRAK'S worst crash in history on Sunday, 4 February, at Chase, Maryland. We all wish them a speedy and complete recovery.

BONSAI
AND
IKEBANA SUPPLIES




"THINGS JAPANESE" 1721 Connecticut Ave., N.W. 331-7991

ICHI-NO-EDA STUDIO



BONSAI ASSOC. INC.
3000 Chestnut Ave.
Balto. MD. 21211
catalog \$2.00
YOUR EVERYTHING FOR BONSAI COMPANY.
(301)235-5336

B O N S A I
B 盆 栽 I



E & A BONSAI HOUSE
16505 NEW HAMPSHIRE AVE.
SILVER SPRING, MD 20904
(301) 384-9879