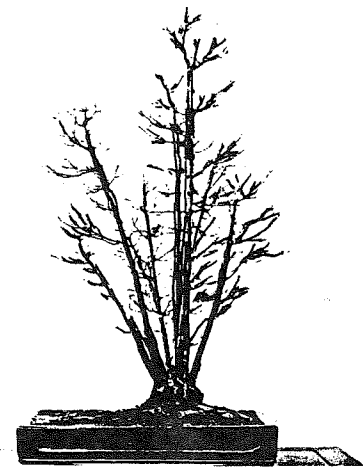


POTOMAC
BONSAI
ASSOCIATION
Newsletter

ISSN 0160-9521



KAEDE (TRIDENT MAPLE) Part III
by Takenma Takenai
Translated by Jules Koetsch



PRINCIPLES OF REMODELING A BADLY SHAPED TREE
Kaede has a high amount of energy or vitality compared with other maple species and is impressive in its robust, masculine appearance both in its upper structure and the appearance of its roots. Hence, the latter details can be used to maximum advantage when kaede is used as a bonsai. But even in bonsai, bad control of the developing plant leads to the risk that lower branches die, branch segments become too long, and it assumes an unnatural shape which tempts one to put it aside as bonsai material.

Instead of discarding the kaede whose shape from top to bottom is no longer satisfactory, it is possible to remodel the existing tree, as will be shown, to utilize the thick, spreading roots and the upper portion of the tree. The accompanying illustration depicts, as an example, a tree shape which can be remodeled. The upper portion can be converted into a double trunk bonsai. Also, the lower trunk with the beautiful thick, spreading roots, can be converted into a very desirable multi-trunk tree.

NON-PROFIT ORG
U.S. POSTAGE PAID
SILVER SPRING, MD
PERMIT NO. 2369

POTOMAC BONSAI ASSOCIATION
c/o National Arboretum
24th & R Sts, NE
Washington, D.C. 20002

PBA Newsletter: Published by the Potomac Bonsai Association, Inc., a non-profit organization, in the interests of its affiliate member clubs and societies. Circulation: over 300 internationally on a monthly basis. Corresponding membership: - \$ 6.00 for 12 monthly PBA Newsletters. PBA membership includes 12 monthly PBA Newsletters, - covered by part of annual membership dues.

For corresponding membership: contact M. Hersh, 102 Devon Ct., Silver Spring, MD 20910, - make check payable to Potomac Bonsai Association

President: Arschel Morell (301) 669-1487
Editors: Julius F. Koetsch (703) 569-9378
Mary Holmes (301) 721-1309
Consulting Editor: Julie Y. Haga (301) 972 3431
Tree of the Month Editor: Dave Dambowic (703) 323-8749
Snips and Slips Editor: Mary Holmes (301) 721-1309

Subscription & Circulations: Molly Hersh & Josephine FinneyFrock

Send articles (in longhand, typewritten, in Japanese, cassette recording, etc.) to J. F. Koetsch, 6709 Caneel Ct., Springfield, VA 22152, (703) 569-9378

Calendar Editor: Jackie Dorsett (301) 263-3995
Associate Editor: Ed Castillo (202) 543-7290
Photography Director: Dave Morse (301) 794-8127
Science Director: Ray Buck (301) 345-4919
Typing Services: Vicki Ballantyne (301) 647-3224
Josephine FinneyFrock (301) 589-3725

PROCEDURE FOR REMODELING UPPER PORTION

Air-Layering the Double Trunk of the misshapen kaede bonsai comes after the managing of the fertilizer and watering from April through May with the tree leafing out luxuriously in May. The previous actions are necessary to prepare the tree for the air-layering.

The air-layering procedure begins during June 10th through 20th. Do not remove the bark as is done with other species and cut the upper bark in long slivers or leaf-pattern to be pried away from the lignum or woody tissue as shown prior to packing the space with sphagnum moss. Instead, using a very sharp, small knife, remove the bark down to the woody tissue completely encircling the trunk for a distance of 3 cm. (1 1/4 inches) as shown in the illustration. Cut the upper edge in a zigzag "lightning" pattern.



In the portion where the bark and cambium have been removed, knead some red clay against the lightning-cut edge. Then place sphagnum moss, which has been previously soaked in water, a distance of 10 cm. (4 inches) along the trunk and tie a plastic bag around the moss to keep it in place. Tie the lower part tightly but leave the upper string loose so that the moss can be checked for moisture and also breathe.

Do not fertilize during this period of time, but avoid letting the moss dry during June 10th to July 20th so that the roots fill the bag as much as possible. Before cutting the air-layered portion free from the trunk, prepare the material for potting.

The cutting of the tree after July 20th is along the line shown on the diagram. Fix the pot with large red clay pellets as a drainage base. Then plant the tree in a fired clay pot using a soil mix of 7 parts red clay, and 3 parts paulownia woods' sand. Leave the sphagnum moss on the roots, do not remove it from the root ball, --plant it as it comes out of the bag. When the air-layered section has been potted, water the soil in the pot until the water flows freely from the hole in the bottom of the pot.

The above procedure yields a shape which is the start or basis for a twin trunk bonsai. Thereafter, please follow the procedures for good management of maples.

PROCEDURE FOR REMODELING THE LOWER PORTION

The lower portion of the tree must be taken care of when the air-layered portion is removed.

Directions for Cutting the Parent-Tree Stock or lower portion with the thick, spreading roots follow. The cut can be made at any height that is to your liking as shown in the diagram but it is suggested that the cut be made low, close to the roots.

Directions for Growing Sprouts from the parent tree. As soon as the above cut has been made, keep the cut section moist by placing a water-soaked, bunched up cotton cloth under a rock as shown in the illustration. The moist cotton cloth will prevent cracking of the stump and the rock will keep the cloth from blowing away.

Do not fertilize at this time but keep the roots adequately watered and keep the cotton cloth moist and covering an area out to the bark/cambium layer. Around August 10th to 20th, sprouts will appear as shown in the illustration. In order to get sprouts to appear, the main points are to water the roots and keep the cloth moist.

Sprouts - Decision on the Number to Pluck. During August 10th to 20th, when the sprouts appear, is the time when the decision must be made as to which sprouts to remove.

The number of sprouts removed is a function of the trunk diameter. For a parent-tree stock of 3 cm. (1 1/4 inches) in diameter, leave 3 sprouts; for 5 to 7 cm. (2 to 2 3/4 inches) leave 5 sprouts; and for 10 cm. (4 inches), leave 7 sprouts. In order not to wound the sprouts which are to remain, use tweezers to remove the unwanted sprouts.

In deciding which sprouts to pluck, one should consider the thickness and relative spacing of the sprout, and only start removing sprouts after the selection has been made.

The remainder of the article will treat 3 sprouts although the procedures are the same for any number of sprouts remaining.

Results of Management. The sprouts will grow excessively long before the end of the year. Keep the cloth in place and moist. Be sure the roots are adequately watered. By doing the latter up until November, the space between the trunks in the lower portion will gradually narrow and the cloth can be removed at that time.

SECOND YEAR PROCEDURES

Spring Pruning. Pruning can be done between February 20th and March 10th to form the basic bonsai tree shape. The small branches are pruned to provide the desired symmetry as shown in the illustration.

Pruning and Leaf Clipping. After the above pruning, do not do any more pruning in the Spring. During the Spring, the tree should be fertilized and this will cause the branches to lengthen and fatten.

June into July is the period when pruning and leaf clipping is to be done. Cut the branches alternately as shown in the illustration and remove the small branches.

Leaves that remain on the branches should be clipped. The plant now has a close cropped appearance.

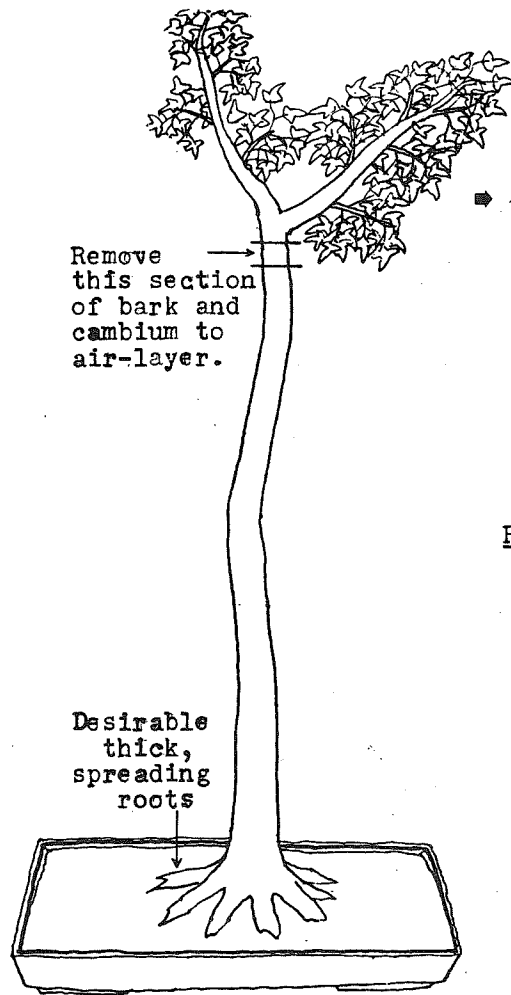
RESULTS OF THE EFFORT

The bonsai in the 3rd and 4th year will grow more perfectly in shape, the trunks will fill in at the stump, and the branch structures will take on good tree shapes.

Therefore, in 4 to 5 years, nevertheless, the Spring pruning, and the June-July leaf clipping will slow the growth of the tree and a bonsai of perfection will be yours. Of course, this is possible if from March 10th to October 20th fertilizer is applied once every month and enough water is supplied otherwise the plant will not grow properly.

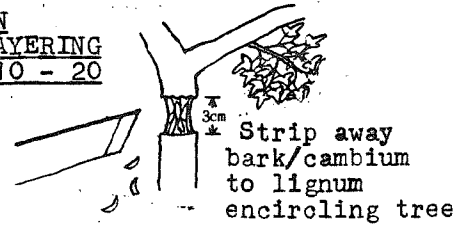
This translation is the last of three articles by the Japanese author Takenma Takenai, which appeared in Seibundo Shinka Sha, 1974. My apologies to the author if I have misspelled the English translation of his name.

FIRST YEAR



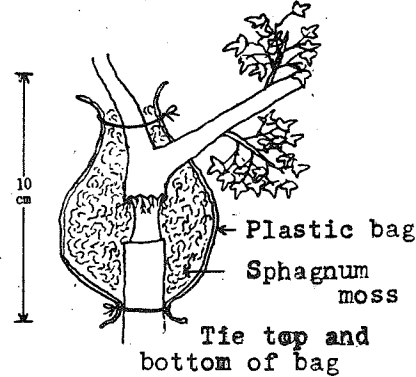
Remove this section of bark and cambium to air-layer.

BEGIN AIR-LAYERING
JUNE 10 - 20



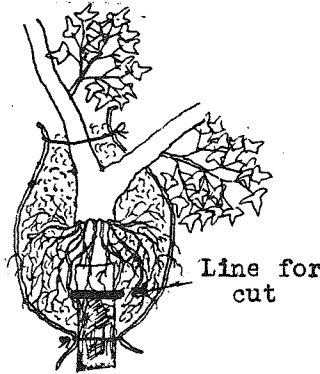
Strip away bark/cambium to lignum encircling tree

ROOTS EMERGE
JULY 1 - 10



Desirable thick, spreading roots

SEVER TRUNK
JULY 20 - 31

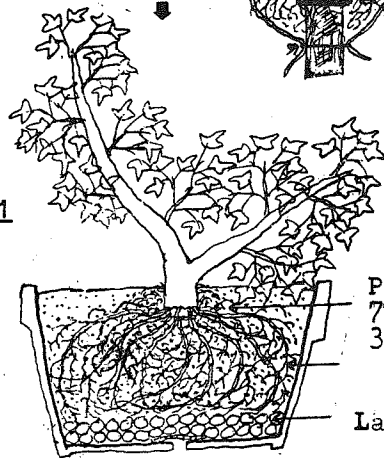


Line for cut

Badly shaped tree due to neglected pruning and leaf-clipping and a subject for remodeling. Make top portion into twin trunk by air-layering.

POTTING
JULY 20 - 31

Do not fertilize during the first month after transplanting. Thereafter, one or two years repot in a bonsai pot. Follow the procedures for fertilizing and watering.

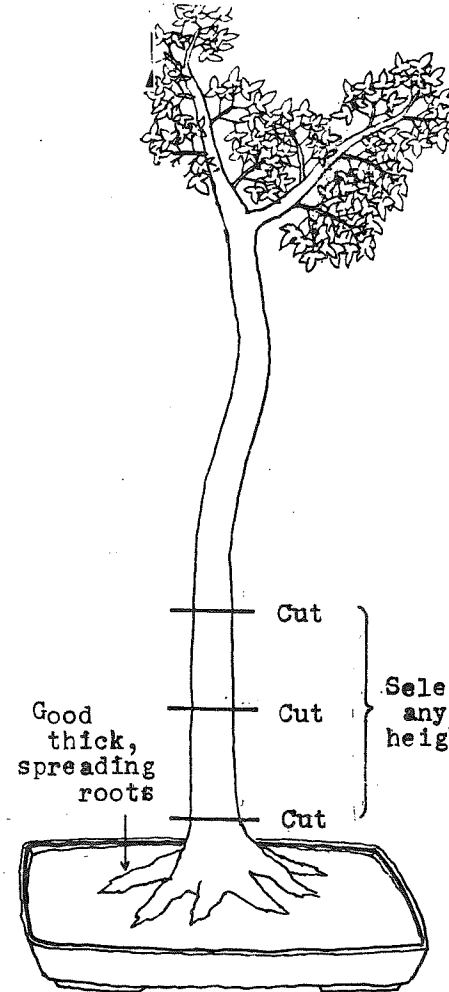


Potting soil:
7-parts red clay
3-parts paulownia woods' sand

Large red clay pellets

FIRST YEAR

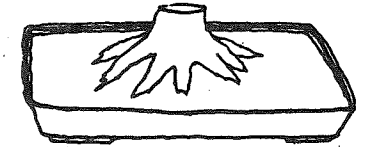
PARENT-TREE STOCK (CUT JULY 20 - 31)
PLACING CLOTH AND ROCK



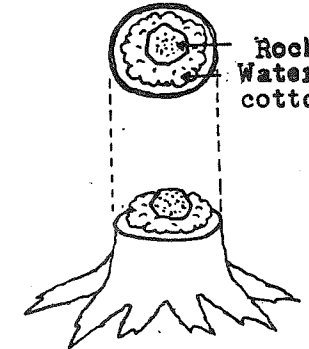
Good thick, spreading roots

Select any height

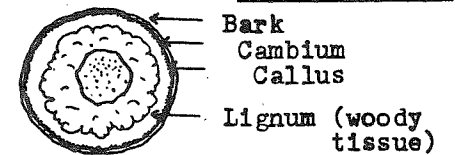
Top portion has been removed



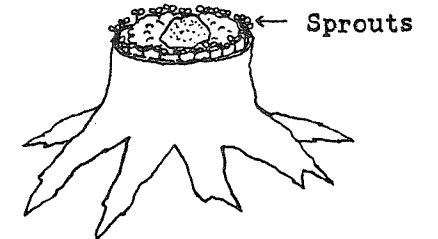
Rock
Water-soaked cotton cloth



CAMBIUM CALLUS FORMS
AUGUST 10 - 20



SPROUTS APPEAR AUGUST 10 - 20



Sprouts

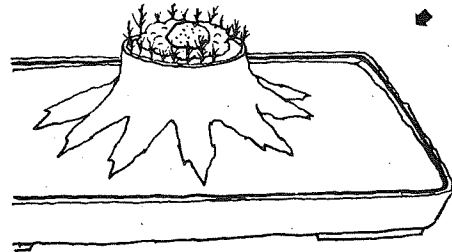
Upper portion of tree was removed to be a double-trunk tree. The lower portion is worth keeping alive to take advantage of the good root system. The height to make the parent-tree stock is a matter of choice.

SPROUTS AROUND AUGUST 17th

FIRST YEAR

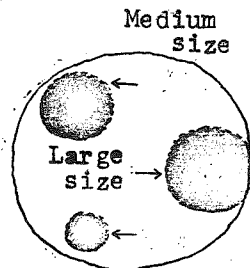
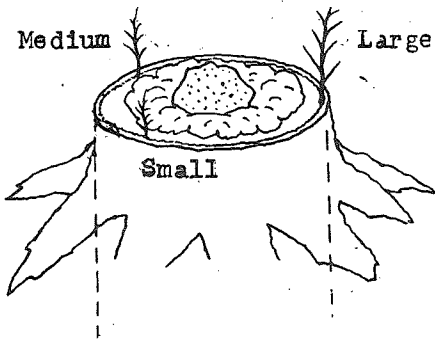
CALCULATING SPROUTS WHICH REMAIN

Diameter of trunk	}	1 1/4 inches - 3 sprouts
		2 inches - 5 sprouts
		2 to 3 inches - 5 sprouts
		4 inches - 7 sprouts

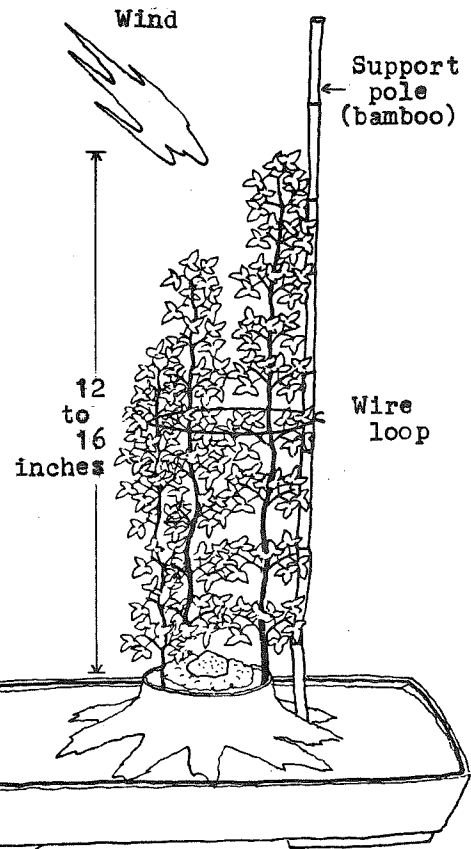


Select fat sprouts to remain and open up the spacing between selected sprouts by removing the unwanted sprouts with tweezers.

RESULTS OF SPROUT PLUCKING



Small size

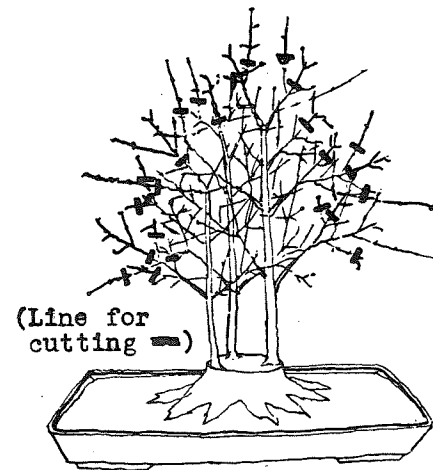


GROWTH AND SUPPORT POLE SEPTEMBER 1 - 10

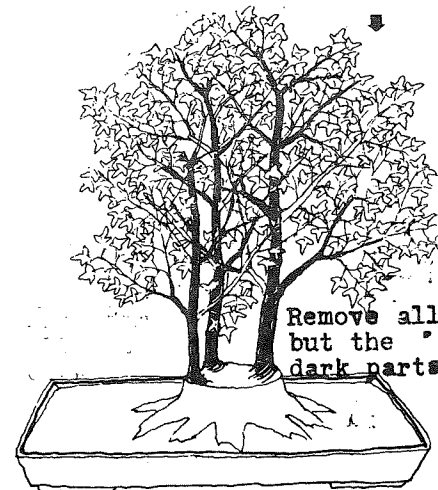
Support pole is to prevent wind damage.

PRUNING MARCH 10 - 20

SECOND YEAR

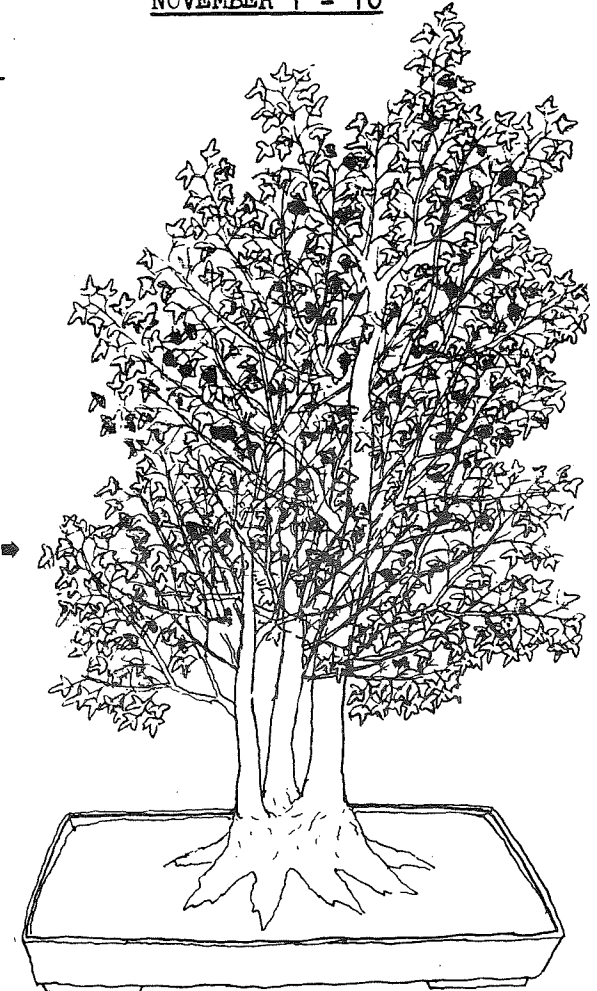


LEAF-CLIPPING PRUNING JUNE 10 - 20



Prune so that branches have only 2 to 3 segments. Prune, alternate branches. Clip remaining leaves

CRIMSON LEAVES NOVEMBER 1 - 10



The space between the three main trunks has narrowed so that the once upright single trunk is now three trunks.

KAEDE REMODELING OF BAD SHAPE
SCHEDULE OF EVENTS

Month/ Date	Year	
	1st	2nd & 3rd
March 10-20		Prune. Fertilize once every month. Water adequately.
April 1-10		Place outdoors on bonsai shelf.
June-July		Leaf clip. Prune.
July 20-31	Sever trunk, transplant air-layered segment into pot. Place cloth and rock on stump. Water roots.	
August 10-20	Sprouts appear.	
September 1-10	Place support pole.	
October 20-31		Stop fertilizing.
December 1-10		Protect from snow and sleet.

1981 PBA SYMPOSIUM UPDATE

All of the major advance planning has now been done for the Seventh Annual PBA Symposium, which will be held at the new Bethesda Marriott Hotel on October 24 and 25. The program will begin at 8:30 a.m. on Saturday, and continue through Sunday afternoon.

Focusing this year on MAPLES (with emphasis on the trident maple), the Symposium will be "action-packed" with numerous and varied events. In addition to the lecture/demonstration program, raffles, bazaar, banquet and exhibit, there will be two stimulating workshops (one on Saturday and the other on Sunday, so you can participate in both if you wish), and a unique collecting trip. Please send your registration form (enclosed with this issue) in early so that you do not miss an event of your choice.

SATURDAY

On Saturday morning, JACK EDEN will lead off with a lecture primarily dealing with the best choices of insecticides and fertilizers for bonsai. Jack has a talk show on gardening on WTOP from 8 a.m. to 11 a.m. every Sunday morning. Prior to the Symposium, we would not be surprised if Jack devoted some time on his radio program to the subject of bonsai.

Next, BILL VALAVANIS will hold his highly educational "Maple Seminar". Bill's lecture will center around a slide presentation dealing with the horticulture, propagation and bonsai training technique of maples. His program last year on pines was a great success, and PBA is delighted to welcome him back this year.

After lunch, CHASE ROSADE will put on a slide demonstration on the "root-over-rock" technique. For his presentation, Chase will bring a maple he has had in training at his bonsai nursery in New Hope, Pennsylvania, and it will be raffled off after he has made it into a beautiful rock-clinging bonsai.

Following the mid-afternoon break, BEN OKI will give a demonstration on how to make a group planting of maples. We are honored to have Ben come all the way from California to show us his techniques. His group planting will also be raffled off following his presentation.

John Naka's New Book

Do not confuse this with the recent book "Bonsai Techniques for Satsuki" which John coauthored with Messrs Ota and Rokkaku. From what John has mentioned to me, his new book "Bonsai Techniques II" will cover many advanced topics in depth. It is to be released the early part of September 1981. It contains advanced information on pots, stands, complimentary plants, how to and what to display, as well as, advanced techniques for your bonsai.

You can obtain the first edition by making checks payable to BONSAI INSTITUTE OF CALIFORNIA, P.O. Box 78211, Los Angeles, CA 90016. The price per copy is \$ 30.00 plus \$ 3.00 for shipping and handling. If you desire a hard-back copy, write to the above address for details.

After Ben's demonstration, there will be the BEN OKI WORKSHOP using trident maples. We have already obtained the large maples to be used in this workshop, and we are grateful to the PBA members who are taking care of them until the Symposium. This styling workshop will be limited to 15 participants, who should sign up in advance using the registration form. A limited number of additional persons can join the fun as "viewers" for a fee of \$3.00 (sign up and pay the fee at 8:30 a.m. at the registration table).

From 6:30 p.m. to 8:00 p.m., there will be the usual CASH BAR, which will be a great time to get together and compare notes over cocktails.

A spectacular BANQUET will be held beginning at 8:00 on Saturday night. Given inflation, we are delighted to report that the price of the banquet has been held down to \$19 per person. The banquet will be great fun, and we hope you will join us for it.

SUNDAY

On Sunday morning, NICK LENZ will present a slide lecture and demonstration dealing primarily with the rapid development of the trunks and surface roots of maples. In his words: "Most of this information is not in print in this country and some of it is quite experimental. It is both fundamental and advanced." Nick's presentation will involve two or three mini-demonstrations, and is a program that should not be missed.

In mid-morning, DR. DAVID ANDREWS will present a lecture and demonstration on David's "Surprise", after which his finished product will be raffled off to a lucky winner.

After lunch there will be the following two choices:

There will be the CHASE ROSADE WORKSHOP on the root-over-rock technique, using trident maples that Chase is specially preparing for this workshop. Chase has asked that each participant bring his or her own favorite rock. This workshop will involve 15 participants (use the registration form), and a limited number of viewers (sign up and pay \$3 at 8:30 a.m. on Saturday at the registration table).

Alternatively, there will be a COLLECTING TRIP led by DAVID ANDREWS, who as many of you know has collected bonsai material in many parts of the United States. This will be an unusual opportunity to learn the skill of collecting in the wild from a true expert and thus to be able to tap the "ultimate" source of material. (Use the registration form.)

BAZAAR

We have arranged for an expanded area to accommodate this very important feature of our Symposium. The bazaar will open for business each morning at 8:30. ANDY DRAPER will offer his handsome bonsai stands; BILL MERRITT will have his unique bonsai spray nozzle and Kingsville Boxwood; KEITH SCOTT, CHASE ROSADE, BILL VALAVANIS, PHIL TACKTIL, and M.P.T. will bring their excellent supply of trees, containers, tools, and books; NICK LENZ and SHARON MUTH will sell their fabulous pots; and BIG will hold a "close-out" sale of all sorts of bonsai items. Be assured that is not a complete list of what these vendors will make available at the bazaar.

MAPLE EXHIBIT

Once again we will have a large display area -- this year exhibiting all styles of maples. We are now assembling the trees for this show, and those interested in having a tree displayed should contact Arschel Morell, (301) 669-1487.

Bonsai Societies of Florida 1981 Annual Convention, 1 - 4 October 1981

The B.S.F. '81 Annual Convention will be held in the Holiday Inn, 7200 Plantation Rd., Pensacola, FL 32504 (904) 474-0101. The convention will have the following well-known bonsai artists giving lectures, demonstrations and workshops: Melba Tucker, Br. Paul Bourne, Dr. Y. W. Bennett, Vaughn Banting and Donna Banting. For more information contact: BSF '81, c/o Thekla W. Morris, 579 Man O War Circle, Cantonment, FL 32533.

BSF always puts on a great convention, - sooo go if you can to the country where the bald cypress and buttonwood abound.

Mary Holmes - Elected to ABS Board of Directors.

Slightly belated congratulations are definitely in order to Mary Holmes for her recent election to a three year term on the American Bonsai Society Board of Directors. We all know that she was an excellent choice and that she will serve well in that capacity.

SNIPS and Slips

IGNORANCE IS BLISS(?)

How many times have you done something to one of your trees, had it flourish, then found out later that what you did is exactly what you shouldn't have done? My latest was to prune back a newly acquired bald cypress, pull down a couple of branches, and repot (without root pruning) the thing in mid-July. A few days later I was talking with Mary Madison, the Buttonwood Queen from Miami who also has some pretty good bald cypress to her credit, and found out that this particular species is especially touchy this time of year. Fortunately, I was able to report that, since my untimely attack upon it, the tree was sprouting new buds and looking disgustingly healthy. Beginner's luck? A fluke? Had I known better I wouldn't have touched it. Maybe the tree knew that my efforts were honorable, if ignorant. Did it sense my misguided ministrations stemmed from affection and to have left it alone would be tantamount to indifference? Plants, like people, are sensitive to all kinds of intangible things science hasn't yet begun to understand. Who knows?

THE ARTIST'S TOUCH

We've had all sorts of advise on different types of tree wound dressings, and here's another one with an interesting twist. Use acrylic paint. It's available in any art supply store in convenient, recappable tubes. Acrylic paint is water soluble when wet, but dries to a hard, impermeable surface. It is non-toxic to plants, and colors can be blended to match any color of tree bark to effectively hide the scar. Come on, you palette pushers, give it a try.

SATSUKI SECRETS

John Naka styled a lovely Satsuki azalea at Atlanta this year and gave the audience a few tips on developing satsukis. Unlike most trees, the satsuki will put strenght in the lower branches at the expense of the upper ones. Thus the tree should be developed from the top down, rather than vice versa. Get the top shaped and grown first, keeping low branches small or non-existent. Once the top is developed, then let the lower branches fill out. If the top starts to get weak, prune back the lower branches.

WOULDN'T IT BE NICE ???

Wouldn't it be nice if we could find some spot on earth where we could grow all the various species of bonsai trees we ever wanted? One of my favorite fantasies is to be somewhere where I'd have a buttonwood living next to a larch, living next to a California juniper - all thriving and all requiring no special environment that I had to provide. I'd work on them whenever I wanted and be able to enjoy them all year long on their bonsai benches. The deciduous tress would, of course, do their dormancy bit, complete with fall color, while the buttonwood remained most happy. Maybe that's what heaven's all about.

--- Mary Holmes

THE SAGA OF AN UNSUCCESSFUL STRUGGLE

I said I wouldn't do it.
I swore there was no way.
My money's in my pocket
And there it's gonna stay.

I made a contract with myself,
Now several years ago,
To keep the collection down to size.
(How come I'm eating crow?)

To get new ones, old ones must go,
And sale time brings a crisis.
I try to resist, but the truth of it is
It's one of my favorite vices.

I've gotten choosey on the digs,
Sometime take nothing at all.
It takes a special collecting spot
Ere rules begin to fall.

But this was not the wilderness
Where I heard the siren call.
'Twas at a national meeting
Within the vendors' hall.

I didn't need another tree,
I'd enough in my collection,
I must excercise some self-control -
So goes my recollection.

But the price was right, the tree a jewel,
And I'd been wanting one of this kind.
So I brought the darned thing home with me
And left my cash behind.

I console myself I'm pickier,
Each tree must be a sensation,
But it still boils down to the fact that I
Can resist anything but temptation.

Mary Holmes

CLUB CALENDAR

August 8 10:00 AM at the Gulf Branch Nature Center. Bill Merritt will present the results of a study on pest control. For the first time, Mr. Merritt will delve into the aspects of a just-completed study. The results of the study provide bonsaiists with a protective, seasonal pest control program. This enables one to prevent discovering when it's already too late, that some pest or disease has just terminated a bonsai.

Also bring trees for styling pointers and critique. Soooo **BRING A TREE !!!!!**

NORTHERN VIRGINIA BONSAI SOCIETY (703) 569-9378

August 16 Charter tree meeting - as in the past, the club will GIVE to all members in attendance a seedling. This year it will be a Gardenia Radicans for development into a bonsai. The catch is that each member who attended a previous charter tree meeting must bring the previous seedling(s) to the meeting for discussion and critique. All trees will be photographed, and the pictures will be maintained in the club library for future reference. Any member who does not wish to participate in the discussion of his or her tree, must pay \$ 2.00 for the plant material. Meeting will be at 3:15 PM at Cylburn Mansion.

BALTIMORE (301) 922-9310

August 20 7:30 PM :- "Viewing Stones, the Japanese Art of Suiseki" by Vincent T. Covello. Our speaker is coauthoring a book of this title with Yuji Yoshimura, which is to appear this Fall. Mr. Covello will offer us a sneak-preview of the subject - he will discuss the artistic criticism of suiseki, their collection, and their use in bonsai. Slides will be presented. The speaker suggests that you bring your favorite viewing stones for display and discussion. Raffle. Main building of the Audubon Society, 8940 Jones Mill Road, Chevy Chase.

BROOKSIDE (301) 299-6194

August 23 2:00 PM Clearwater Nature Center. This will be a photo session. Members are to bring trees for photographing and their own cameras if so desired. Pointers will be given on how to photograph bonsai properly. Suitable backdrops will be provided. Photos are useful to study year to year development of a tree and also helpful in identifying a stolen tree. The photos can form the nucleus of a club library of members' trees.

KIYOMIZU (301) 423-8230

The Annapolis and Washington Clubs are not holding any meetings in August.

If you plan to attend a meeting other than your parent club's meeting, it is recommended to telephone the number listed above to confirm the arrangements. Because of any of a number of reasons the schedule above can be changed. To be further on the safe side you can telephone as early as possible to let the club know that you expect to attend and then request that you be advised of any schedule changes.

SHOEN BONSAI AND JAPANESE GARDEN

Bonsai pots
tools
trees
raffia

terra green
granite grit



Mon - Sat
10:00 - 4:00
Closed Sunday
Other hours by
appointment

Small Japanese gardens installed
Japanese garden items

TAMAHI (rape seed cake fertilizer for bonsai)
made of 80% rape seed residue, 20% fish bone meal
available for evergreen, deciduous, fruiting, and flowering trees

FUTORU (thickens trunks in a short period of time)

TORIKI BOND (effective air layering, guaranteed to form roots radially)

Tentatively

AUGUST 16: Free demonstration on the usage of
FUTORU and TORIKI BOND for purchasers.
Please call.

301-762-0878

601 E. Gude Dr., Rockville, Md. 20850

JIU-SAN BONSAI

THE COMPLETE BONSAI SHOP

One of the East's largest selections of bonsai containers, tools, books—including those printed in Japan (BONSAI MASTERPIECES). Rare plants, indoor-outdoor bonsai & saikei, flower stones, pre-bonsai, soils, figurines, wire, stands.

NO MAIL ORDER

Our new location — Open 7 days/week

1243 Melville Rd., Farmingdale, N.Y. 11735

Tel. (516) 293-9246

松園盆栽