

<b>ABC</b>	<b>Annapolis</b>
(R) = Regular meetings, held at the Main Library, West St., Annapolis (downtown), the second Friday of every month at 7:30 p.m. Sites of other meetings specified below.	
Jun 16	Rock Collecting Trip with BBC - see BBC schedule at right
July	To be announced

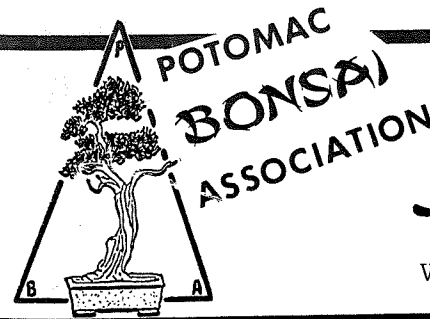
<b>NOVABONSOC</b>	<b>Northern Virginia</b>
(R) = Regular meetings, held at the Gulf Branch Nature Center, 3608 Military Rd., Arlington, Va., (Note change of time and day of meetings, which will be on the second Saturday of each month at 10 a.m.)	
Jun 2	Bonsai Workshop conducted by Chase Rosade; bring own tree, materials; National Arboretum, 10 a. m.; \$12.50 per person; takes place of regular second Saturday meeting. date
July 13	(R) General Bonsai Workshop; bring any tree with any problem, or starter material, or any other work you want advice on

<b>BBC</b>	<b>Baltimore</b>
(R) = Regular meetings, held at Cylburn Park Mansion, Cylburn Park, Baltimore, at 3 p. m.	
Jun 16	(R) Rock Collecting; meet at Dave Brown's office - Beltway (I-695) to Md Route 3, south to Md Route 100, go to Md Route 2 (Governor Ritchie Hwy), south 1/4 mile past Jumper's Hole Rd to 8174 Gov Ritchie Hwy (on the right)
July	No meeting this month because of National Convention '74 in Pasadena, Calif.
Aug 18	(R) Program on Highlights of National Convention '74, with slides of show trees and other points of interest



<ul style="list-style-type: none"> <li>• Imported Bonsai Pots</li> <li>• Imported Chrysanthemum Stones</li> </ul>	June 9	Noon - 5 p.m.
<p><i>don't forget...</i></p> <p><b>PBA Auction!</b></p>	<ul style="list-style-type: none"> <li>• Pre-Bonsai Stock Materials</li> <li>• Miscellaneous Items</li> <li>• In-Training Bonsai</li> </ul>	<p>CAPPER'S NURSERY 8517 Leesburg Pike McLean, Virginia</p>

	<p><i>Potomac Bonsai Association</i> c/o National Arboretum 24th &amp; R Streets, NE Washington, D.C. 20018</p>
TO:	
/FIRST CLASS/	



# Newsletter

Vol. 4, No. 6

June 1974



SPECIAL SHOW ISSUE



POTOMAC BONSAI ASSOCIATION

# Newsletter

Published solely in the interests of the POTOMAC BONSAI ASSOCIATION, a non-profit organization, and its affiliate member clubs and societies, under the authority of its Board of Directors.

POTOMAC BONSAI ASSOCIATION

c/o National Arboretum  
24th & R Streets, NE  
Washington, D.C. 20018

### Officers for 1974-75

John Hreha.....President  
John Hinds.....First Vice-President  
Richard Meszler.....Ed. Vice President  
Joyce Pelletier.....Secretary  
Molly Hersh.....Treasurer

Member, American Bonsai Society  
Member, Bonsai Clubs International  
\* \* \*

Address Newsletter submissions to  
6394 Eighth Circle  
Alexandria, Virginia 22312  
or call

JAMES R. NEWTON, Editor  
(703) 256-3623

CLIFTON POTTBERG, Education Editor  
(301) 366-8844

**ALL REGULAR FEATURES  
RETURN NEXT MONTH**



many large and small materials for bonsai  
Baldcypress  
Quinces  
Azaleas  
Shimpaku and other Japanese trees

## Croton Hill Farms, Inc.

call 301-472-2664 for an appointment with Cliff Pottberg

and: classes in bonsai: \$7.50/hr  
\$35/person - 6 hr. lesson  
individual classes tailored to your needs and desires  
\$15/additional person up to 5  
form a group and select your area of greatest interest

June 1974 Vol. 4, No. 6

## Potomac Bonsai Association

ANNAPOLIS BONSAI CLUB  
BALTIMORE BONSAI CLUB  
BROOKSIDE GARDENS BONSAI  
NORTHERN VIRGINIA BONSAI SOCIETY

### the cover

The Laceleaf Maple (*Acer palmatum dissectum*) which swept the popular voting at last year's PBA Show repeated the feat again. It was undisputed First Choice of visitors to the National Arboretum on both April 27 and 28. It is a NOVABONSO tree.

Other popular choices are shown elsewhere in this issue. All trees displayed are winners, however, having been picked by individual clubs as the best of their members' efforts. (Photo by Suniewick)

### ADVERTIZING RATES

1 column inch (before reduction)..... \$ 1.75  
1/8 page..... \$ 2.25  
1/4 page..... \$ 4.50  
1/2 page..... \$ 7.75  
Full page..... \$15.00

Classified 7¢ per word, 10-word minimum

10% discount for repeats of identical copy in 3 or more Newsletter issues. No charge for display lay-out. Photo screening extra; rates based on individual job requirements.

For further information, write Newsletter editorial office, address shown on page 2, or call Editor, 703-256-3623

### SPECIAL STOCK PLANT SALE

- BLUE MOSS CYPRESS/ 12 - 18" high, huge trunks, exposed roots...../7.50 ea
- BLUE MOSS CYPRESS/ 7-10" high../3.50 ea
- BLUE (Faith Bush) CYPRESS/ 12-18" high, excellent buy...../5.50 ea
- DWARF GOLDEN CYPRESS/ 7 - 10" high, a beautiful tree...../3.75 ea
- CASCADE JUNIPER (Wiltoni) in 2 gal. container...../5.25 ea
- KOUSA DOGWOOD/ 2 years old, in 5 x 8" flat...../1.75 ea
- JAPANESE MAPLE/ 2 years old, in 5 x 8" flat...../1.75 ea
- JAPANESE BLACK PINE/ 4 - 6 years old...../2.50 ea
- SATSUKI AZALEA/ from 2 - 10 years old...../1.50 to 25.00 ea

Available soon ---

KINGSVILLE BOXWOOD and HINOKI CYPRESS  
2 gal size...../3.75 ea

Part of above listing to be auctioned by PBA, June 9

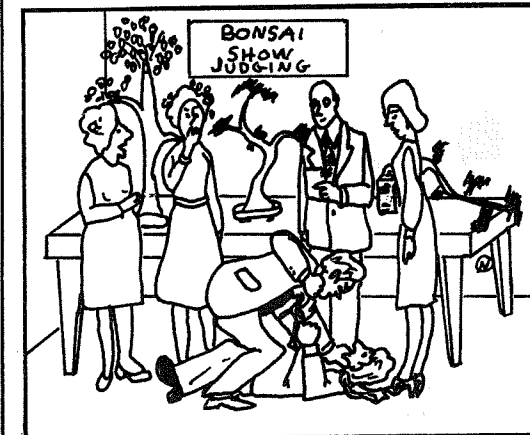
Send me your WANT LIST for availability and price. We try to provide quality at modest prices

ARTHUR R. COCHEL

12005 Blaketon Street  
Upper Marlboro, Maryland 20870  
301-249-5687



JAPANESE MAPLE GROVE (*Acer palmatum*) from NOVABONSO. (Photo by Suniewick)



"Well, that's one way of picking the best tree."



## LOTUS IMPORT & EXPORT

- jewelry
- jade
- silk
- chinaware
- antiques
- gift items
- other orientalia

PARKINGTON SHOPPING CENTER  
4210 WILSON BOULEVARD  
ARLINGTON, VIRGINIA 22203 USA

(703) 525-6171

**BONSAI POTS • TRAYS • STANDS**

10% discount to  
PBA and affiliated club members



(Photos by Suniewick)

BBC  
Japanese White Pine  
(Pinus parviflora glauca)

NOVABONSOC

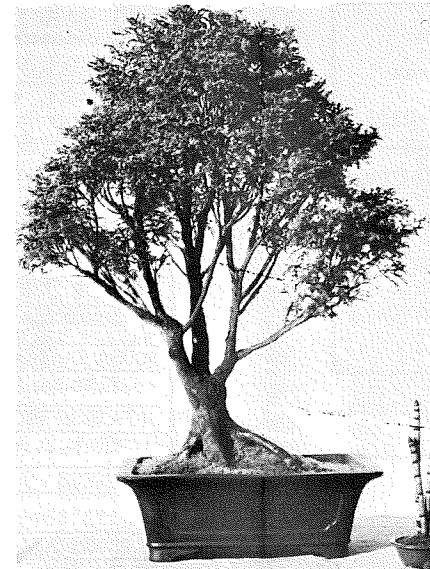
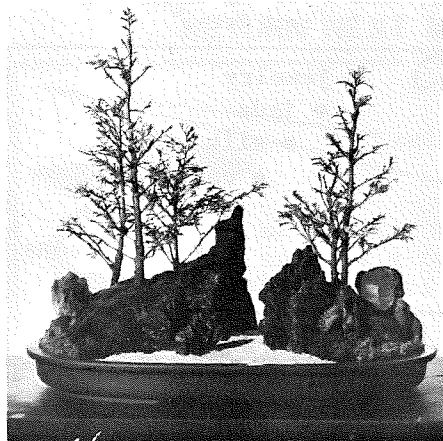


Nikko Cypress Saikei  
(Chamaecyparis obtusa)

BGB

Azalea  
(Rhododendron sp.)

NOVABONSOC



NOVABONSOC  
False Cypress  
(Pisifera squarosa)



NOVABONSOC  
Weeping Beech  
(Fagus pendula)



BGB  
European Hornbeam  
(Carpinus betulus)

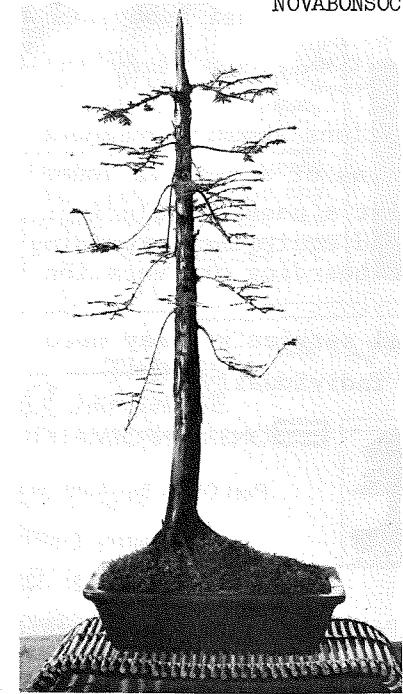
Colorado Blue Spruce  
(Picea albies clanbrasilliana)

BGB



Baldcypress  
(Taxodium distichum)

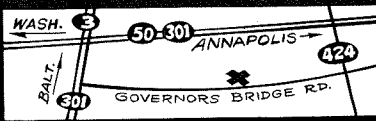
NOVABONSOC



Hinoki Cypress  
(Chamaecyparis obtusa)

NOVABONSOC





8 a.m. - 6 p.m.  
seven days a week  
Phone (301) 798-0231

Dwarf Rhododendrons Japanese Maples, all sizes and varieties  
Dwarf Pomegranate Cotoneasters Secondary Planting Materials  
Dwarf Conifers Azaleas 13 varieties of Junipers  
We now have seedling Bristlecone Pine, Small Pots & Bonsai Dishes  
Japanese Black Pine for greening on - for Bonsai

—Paid your dues? Check with your Treasurer—

announcing something

# —BIG—

establishment of

## BONSAI INFORMATION GUILD, INCORPORATED

marks a new concept in service to bonsai hobbyists and the public

owner-operators James R. Newton President James C. Hreha Treasurer are ready to

- research answers to your questions about any aspect of bonsai
- present lecture-demonstrations of any style bonsai planting
  - supply individual bonsaiist's needs, including: ordering stock materials, tools, pots, and equipment; providing in-training bonsai; and arranging for boarding or "vacation babysitting" your bonsai
  - provide any other bonsai service you may need

fees arranged individually

listed in Yellow Pages under "Nurserymen"

"Your need is our service."



BONSAI INFORMATION GUILD, INC.

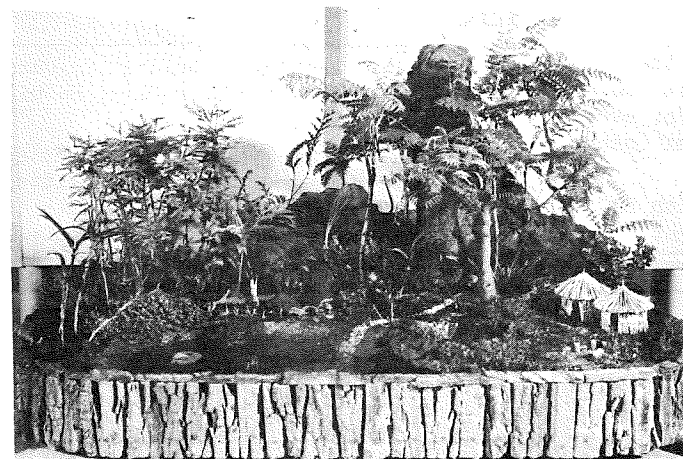
Post Office Box 6140 Shirlington Station

Arlington, Virginia 22206

703-256-3384

Industrial Member, Potomac Bonsai Association

... think **BIG**



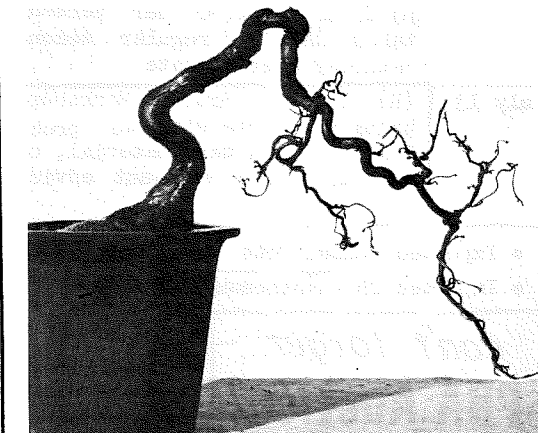
JUNGLE SCENE from BGB, rated high in visitor poll; Suiseki (above right) from NOVABONSOC; Sir Harry Lauder Walking Stick (*Corylus avellana contorta*) from BBC. (Photos by Suniewick)

### BGB

Brookside Gardens Bonsai

(R) = Regular meetings, held at Brookside Nature Center, 1500 Glenallan Ave., Wheaton, Md., on the third Friday of each month, 7:30 p.m.

- Jun 2 Bonsai Workshop conducted by Chase Rosade; bring own tree, Materials; National Arboretum, 10 a.m.; \$12.50 per person
- Jun 21 (R) Tree Workshop; bring trees rejected for PBA Show, or any other tree you want advice on
- July 19 (R) Same type Workshop as for June



## Ginza THINGS JAPANESE

TANE S. YOSHIDA

will be pleased to serve

PBA members at her shop

• bonsai books

• bonsai stands

• bonsai pots

### • oriental gifts •

- Japanese dolls
- kimonos
- new zori sox
- lacquer
- lacquer ware
- brushes
- happi coats
- jewelry
- parasols
- fans
- chinaware
- zori
- tabi

1006 20th Street, NW (near K Street)  
Washington, D.C. 20036  
telephone 202-331-7991