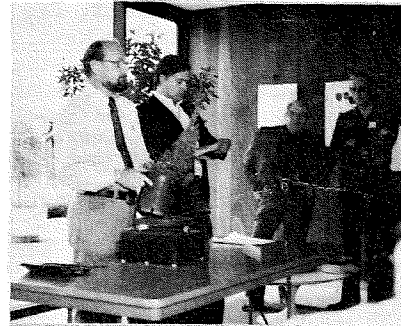


"I know bonsai is an oriental art, but isn't Nipperson overdoing it a bit?"



DEMONSTRATION BEGINS as Pete Abresch, newly elected Director, talks about tree he will style for visitors to the Second Annual PBA Bonsai Show. This Chinese Juniper (*Juniperus chinensis* 'robusta green') was one of four used for demonstration during the two-day Show. PBA's new President, Cliff Pottberg, stands ready to help Pete in his first public demonstration. (More Show pictures in next month's Newsletter) (Photo by Newton)



BBC MEMBERS' TREES are discussed by the group's Educational VP Cliff Pottberg for the benefit of visitors to the Johns Hopkins Art Festival, held April 13-15 on the University Campus. Styling demonstration produced tree for TV auction. BBC trees are shown frequently in the Baltimore area as part of BBC's continuing member recruitment efforts. (Photo by Meszler)

Classified

CAN'T REMEMBER who I loaned my copy of *Man Lung Garden Artistic Pot Plants* by Wu Yee-sun. Would appreciate a call from the individual. Thanks. De Warren, 301-589-5353.

Got ideas, hints, suggestions about our activities? Don't keep them to yourself. Call the Newsletter editor!

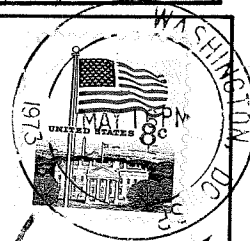


Potomac Bonsai Association

c/o Brookside Botanical Gardens
1500 Glenallen Avenue
Wheaton, Maryland 20902

FIRST CLASS

TO: MRS. JACK WELLS
1810 37th Street, NW
Washington, D.C. 20009



serving • Northern Virginia • Maryland • District of Columbia •

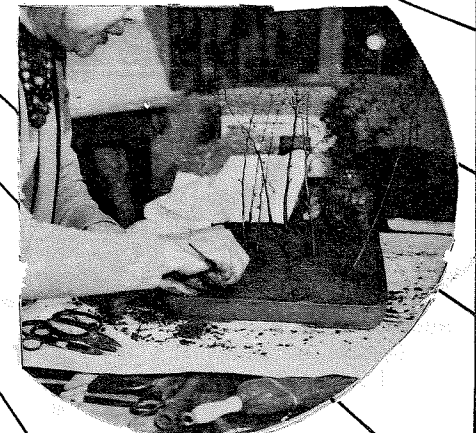
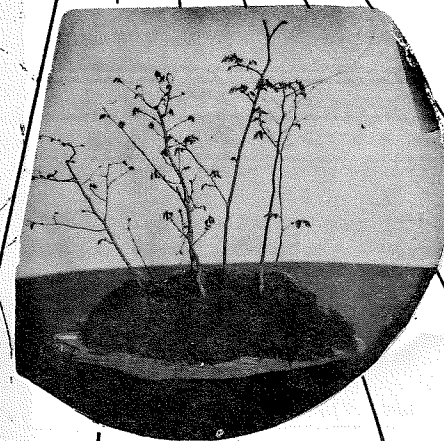
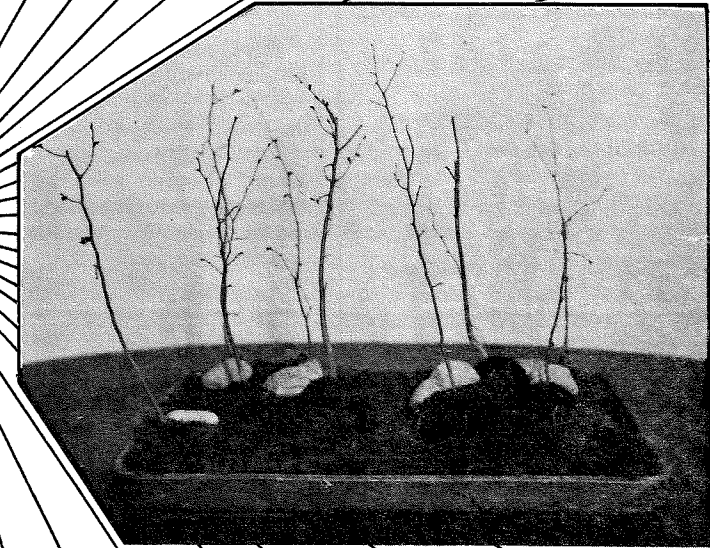
PBA Newsletter

including news of the

- ANNAPOLIS BONSAI CLUB
- BALTIMORE BONSAI CLUB
- NORTHERN VIRGINIA BONSAI SOCIETY

Vol 3 POTOMAC BONSAI ASSOCIATION No 5

May 1973



POTOMAC BONSAI ASSOCIATION



Newsletter

Vol 3 No 5 May 1973

Published solely in the interests of the POTOMAC BONSAI ASSOCIATION, a non-profit organization, and its affiliated clubs and societies, under authority of its Board of Directors

Officers for 1972-73

President.....James R. Newton
 First Vice-President.....Leo Marcus
 Educational Vice-President....C. Pottberg
 Secretary.....Leo J. Meyer
 Treasurer.....Molly Hersh

* * *

PBA meets regularly the third Friday of each month at

BROOKSIDE BOTANICAL GARDENS
 1500 Glenallan Avenue
 Wheaton, Maryland 20902

* * *

Member, American Bonsai Society
 Member, Bonsai Clubs International

* * *

Submissions may be addressed to
 6394 Eighth Circle
 Alexandria, Virginia 22312

or call

JAMES R. NEWTON, Editor
 (703) 256-3623

CLIFTON POTTBURG, Education Editor
 (301) 366-8844

the cover

Saiki created by Mrs. Haruko Kawasoye at the Northern Virginis Bonsai Society meeting on April 11 stands finished, except for some moss, in upper photo. At lower right, Haruko explains techniques as she works. Photo at lower left shows similar planting on rock she created 10 years ago. Both creations are of Japanese Graybark Elm (*Zelkova serrata*). She is Founding Member of PBA, and operates Bonsai-Saiki Institute at her home in Severna Park, Md.

(Photos by Newton)



What greater glory

Can Man aspire to

Than to stand tall as a tree?

- Newton

Dues Due NOW!

Dues are due as of April 30. Members not renewing by May 30 must, reluctantly, be dropped from the rolls. Please, we don't want to lose you.

Any donations over and above the amount of dues will be gratefully accepted and earmarked to defray expenses of publishing the PBA Newsletter.

PBA dues are \$10 per year, plus \$2 for each additional member from the same household. Affiliate club members pay their dues to their own club in the amount set by the organization.

ADVERTIZING RATES

1 column inch (before reduction)..... \$ 1.
 1/8 page..... \$ 1.75
 1/4 page..... \$ 3.50
 1/2 page..... \$ 6.75
 Full page..... \$13.50

(Photo screening extra; write for rates)

Classified - per word (minimum 10 words)..... \$.07

* * *

10% discount for repeats of identical copy in three or more Newsletter issues

* * *

No charge for display lay-out, or will accept camera-ready display copy

* * *

TORY MOORE
 Advertising Director

BBC

Baltimore
 Bonsai Club

May 20 Rock Planting Workshop for planting those rocks collected on May 5 or 12 trips; some small trees, plants available; Cyburn Park, 3 p.m.

May 27 Workshop for the Monster (see story, page 8, April Newsletter)

Jun 17 Cascade Workshop led by Cliff Pottberg; problem tree session (bring your own); Cyburn Park, 3 p.m.

Jul Bonsai Congress '73, Atlanta, Ga.
 19-22 Regular meeting slipped to Aug. 5

SAIKEI...

(Continued from page 3)

cepted and used to defray expenses. A \$15 fee will be charged for participation in the workshop on Saturday. Observers fee will be \$1.50.

Dottie will do a 5- or 7-tree planting, using trees purchased through Croton Hill Farms. Several species are under consideration, including Juniper, Boxwood, Maple, and Zelkova (Elm). The finished work will be raffled off immediately following the demonstration session. Raffle tickets will be available at 50¢ each or three for \$1.25.

Workshop participants should make arrangements to obtain five to seven 2-to-5" old tree materials, saiki tray, and pots. Soil, wire, and rock material will be available. Suggested plant material includes Juniper (one of several varieties are suitable), Boxwood, Japanese Holly, Maple, or Zelkova. If plants are needed, would-be participants can order them at the time reservations are made.

Dottie and husband Luther are Founding Members of the American Bonsai Society, and she is currently a Director of that national organization. For many years Dottie was editor of the quarterly ABS BONSAI JOURNAL, a post she relinquished only two months ago. The Youngs own and operate Keith Valley Nursery (wholesale) in Spring House, Pa. The couple also escort bonsai tours to Japan.

PBA TREASURER'S REPORT May 10, 1973

Balance on Hand (Apr 20, 1973) \$125.78

Receipts
 Dues \$148.00

Expenditures
 Ruth Lamanna (35 yds burlap for Show) \$ 17.84
 Clyde Roland (tape for Show) 7.86
 Snyder Printing (Apr-May Newsletter, tree name cards) 109.40
 BCI (51 back issues of magazine for PBA Library) 28.40
\$163.50

Balance on Hand (May 10) \$110.28

Respectfully Submitted
 Molly Hersh

Leave It To A Tree

A large tree has about 500,000 leaves, but a conservative estimate is that it sheds about 2,300,000 in the fall.

Bonsai enthusiasts don't have this problem. Or do they?

A bonsai hobbyist's problem in this regard may be less only in degree. One enthusiast who has a Laceleaf Maple says it has maybe 200 leaves at its peak but swears it sheds about 2,000 each fall.

How about your bonsai?

DIRECTORS... (Continued from page 3)

General discussion of Newsletter costs resulted in a unanimous resolution that the Board of Directors take up the question of how to obtain sufficient funds to maintain the Newsletter quality in the face of changes in money availability as affiliate clubs are established. There was general agreement that the growing reputation of the Newsletter makes it necessary to maintain a quality publication, and endeavor to introduce further improvements.

The Business Meeting was adjourned at 9:55 a.m.

tree of the month

by CLIFF POTTBERG

PBA Educational Vice-President

This month we digress from discussion of a single species to talk about a whole family - Ericaceae (air-ah-cash'-eye).

This family takes its name from the true Heath: Erica. Thus, although it is called the Heath Family, it includes many better known representatives, almost all of which make excellent bonsai! Consider:

- Heath (Erica*) - more than 500 species.
- Heather (Calluna vulgaris*)
- Japanese Andromeda (Pieris japonica) - and other Pieris species.
- Azalea and Rhododendron (Rhododendron sp.) - the usable list of varieties is almost endless.
- Mountain Laurel (Kalmia latifolia) - and other Kalmia species.
- Blueberry (Vaccinium sp.**) - about 130 species.
- Huckleberry (Gaylussacia sp.**) - about 50 species.
- Wintergreen (Gaultheria sp.) - more than 100 species.

One article has already been published on Azaleas (PBA Newsletter, Vol. 2, No. 5, May 1972). Further articles will be done on other genera of the family. Some of these, most with many species in them, include: Andromeda, Arbutus*, Arctostaphylos**, Bruckenthalia*, Cassiope*, Chamaedaphne, Daboecia*, Enkianthus, Epigaea, Gaultheria***, Ledum, Leiophyllum*, Leucothoe, Lyonia, and Zenobia. This list is by no means complete.

Most Ericaceae need a moist, rich, acid soil and shade. Many are specifically bog plants and enjoy a wet, saturated soil. Peat moss alone is a satisfactory growing medium for some. Even the more upland plants like Mountain Laurel grow best in moist acid leaf mold. Thus, they all are easy to cultivate, since good drainage, the need for which is a problem for most bonsai beginners, is not a particularly pressing factor.

*Has leaves so small the genus represents excellent material for Mame bonsai.

**Has interesting fruit.

Heath Family

Almost all Ericaceae have small profuse blooms which represent an additional attraction of the plants beyond their almost universal characteristics of interesting bark, leaves small enough for bonsai, general twiggy, and the ability to bud from old wood. Many also have a dark, rich evergreen foliage.

So few of the genera have been used to any extent for bonsai that many are unexplored territory for the bonsaiist. Someone looking for a plant to work with as his own specialty could hardly do better than to pick a member of the Heath family, the Ericaceae.

Name Derivations

The third in a series, this listing continues the name derivations of trees frequently seen as bonsai.

- JUNIPERUS - classical Latin name of the Junipers.
- MAGNOLIA - named for Pierre Magnol, early professor of botany at Montpellier.
- PIERIS - named for Pieris, a muse in Greek mythology.
- PRUNUS - ancient Latin name of the Plum tree.
- QUERCUS - classical Latin name for the Oak tree.
- RHODODENDRON - from two Greek words meaning "rose" and "tree".
- ROBINIA - named for Jean Robin and his son Vespasian Robin, who first cultivated the Locust in Europe.
- SALIX - classical Latin name of the Willows.
- TAXUS - classical Greek name for the Yew tree.
- WISTERIA - named for Casper Wister, distinguished Philadelphia anatomist who died in 1818.

Some trees not getting enough nitrogen may have a yellowish cast to their leaves and young leaves may turn a clear yellow. On the other hand, if the older leaves begin to turn yellow and die, it may indicate that the roots have been injured by overfertilization.

PBA

Potomac
Bonsai Association

May 12 Plant/Rock Collecting trip to the Contee Co.; meet corner of Old Gunpowder and Van Dusen Rds., off I-95 in Md. (see story on page 5 of April Newsletter); 8 a.m.-Noon

May 18 Beginners Workshop preparing for visit of Mrs. Dorothy Young; work will get trees ready for creating saikei; bring your own trees, or some stock will be available; make reservations with Jim Newton 703-256-3623, or Cliff Pottberg 301-771-4290; Brookside Nature Center, 7:30 p.m.

Jun 1 Saikei Lecture/Demonstration by Dorothy Young (5 or 7 trees); no charge for members, but \$1 donation accepted to defray expenses; no reservation necessary; Brookside Nature Center, 7:30 p.m.

Jun 2 Saikei Workshop conducted by Mrs. Young; observers, \$1.50; participants, \$15 (change from previously announced charges); each workshop limited to 10 persons; reservations required, call Jim Newton 703-256-3623, or Cliff Pottberg 301-771-4290; National Arboretum, 24th & R Sts., Washington, D.C., 10 a.m.

Jun 15 Root-Over-Rock Workshop conducted by Cliff Pottberg; problem tree session (bring your own); Swap 'n Sell; Brookside Nature Center, 7:30 p.m.

Jul 19-22 Bonsai Congress '73, Atlanta, Ga. Regular meeting slipped to Aug. 3

Saikei Demo, Workshop Set June 1, 2

Mrs. Luther Young (Dorothy -- Dottie to fellow bonsai enthusiasts) will headline PBA activities during the May-June period. She will demonstrate creation of a saikei on Friday, June 1, at Brookside Nature Center and conduct one or more workshops on June 2 at a site to be announced at the time reservation is made.

Reservations are not required for the demonstration on Friday, but MUST be made

Pottberg New
PBA President

The Board of Directors of PBA met at 10 a.m. in the National Arboretum's small conference room. Jim Newton presided over the first order of business: election of PBA officers. With five Directors present (Abresch, Craig, Hersh, Newton, and Pottberg), a quorum was constituted. Election results were:

Cliff Pottberg.....President
Milton Kidd.....First Vice-President
John Hreha.....Educational Vice-President
John Hinds.....Secretary
Molly Hersh.....Treasurer

The Directors chose Cliff Pottberg as its Chairman. Jim Newton, retiring President and Chairman, relinquished control in favor of the new Chairman, whose first items of business were naming of several posts and committees:

To be Services Coordinator - Past President Jim Newton. This position will (see POTTBERG..., page 7)

Directors Elected

The Annual PBA Business Meeting was held at 9 a.m. immediately preceding the opening of the Second Annual PBA Bonsai Show on April 28. A quorum being present, election of Directors to fill four expiring terms resulted in the following:

for Baltimore: Cliff Pottberg
for Virginia: Jim Newton
At-Large: Bill Craig
At-Large: Pete Abresch
(see DIRECTORS..., page 5)

for the Saturday workshop(s). Call Jim Newton, 703-256-3623, or Cliff Pottberg, 301-771-4290. Each workshop is limited to 10 participants, and reservations will be taken on a first-come, first-served basis.

Although there is no specific charge for the June 1 demonstration and lecture, a voluntary donation of \$1 will be accepted (see SAIKEI..., page 5)

ABC

Annapolis
Bonsai Club

- May 24 Styling Workshop, all materials furnished; Bittersweet Hill Nursery, 6 p.m., call Nursery for reservation: 301-798-0231
- Jun 21 Potting Workshop to pot trees styled in May meeting; Bittersweet Hill Nursery, 6 p.m.

Hall Elected Head

Founding members from the greater Annapolis area met on April 26 at Bittersweet Hill Nursery in Davidsonville, Md. and formally established the Annapolis Bonsai Club.

Business portion of the meeting included a review of the proposed constitution, led by Peter Abresch and election of club Directors:

- Monroe B. Hall.....President
- Mrs. Evelyn Huebel...First Vice-President
- Peter Abresch.....V-P for Education
- David Brown.....Treasurer
- Anne Barrett.....Secretary
- Mrs. Dorothy Brown.....Member
- Ruben Goldstone.....Member

Highlight of the meeting was a demonstration of bonsai techniques presented by Cliff Pottberg, PBA Educational Vice-President, which served as an introductory lesson for many of those present. Next scheduled meeting will be held on May 24 at the Bittersweet Hill Nursery, starting at 6 p.m. This activity will be a workshop concentrating on the techniques of styling. Members wishing to attend are requested to call the Bittersweet Nursery on 301-798-0231 for reservation. All necessary materials will be supplied for members not having them.

did you know...

Syringe your plants in summer. This term, meaning to spray with a fine mist, reduces overheating in summer and increases plant growth. Most important, however, recent research indicates it can cut down on disease and other plant disorders by as much as 50 percent!

NOVABONSOC

Northern Virginia Bonsai Society

- Jun 13 Tree Improvement Workshop; each member bring one or more trees on which developmental work is needed; help on problem trees will be available; Gulf Branch Nature Center, 7:30 p.m.
- Jul 11 Bonsai Auction; each person attending is asked to bring at least one item to be auctioned off; can be consignment (15% to NOVABONSOC treasury) or donations gratefully accepted; some items suggested as suitable can include moss, secondary plantings, rocks, plants, trees, pots, wire, tools, etc.; refreshments will be served by members; auctioneer to be announced; Gulf Branch Nature Center, 7:30 p.m.

I wish to express my thanks to the many PBA members, including those from affiliate clubs, who contributed in time and effort to make the recent PBA Bonsai Show the outstanding success it was.

I particularly want to point out that John Hreha deserves a great deal of credit for the preliminary work he did on planning and arrangements prior to the illness which forced him to withdraw as Show Chairman. When I was asked to take over as Chairman, much of the groundwork had already been laid.

Each Show is a learning experience and I feel we all learned a great deal as we set up and displayed 51 excellent examples of the bonsai art. In my opinion, this year's Show compared well with the "big" shows put on by the national bonsai organizations.

Again, my personal thanks to each and everyone who helped.

Ruth Lamanna
Show Chairman

bc '73
atlanta, ga.

Fertilizer Tips

It is better to half starve your tree to kill it with the kindness of overfeeding it. A tree will survive with too little fertilizer, but too much burns off the roots, causing it to die. Strive for the mean; err, if you must, on the side of too little fertilizer rather than too much.

A tree that stops growing in the middle of its growing cycle is usually in need of more fertilizer.

Use care if you fertilize with manure, bonemeal, tankage, or dried blood. The nutrients from these materials are slow to penetrate and may burn the plants. They also are hard to handle, have a disagreeable odor, often contain weed seeds, and do not contain all the nutrients essential for tree growth.

POTTBERG...

(Continued from page 3)

have the responsibility to pull together PBA and affiliate club efforts at providing member services. These include such diverse areas as nursery and equipment sources lists, tree-sitting for vacationing members, speakers bureau, instructor and demonstrator training, new club formation, and others as needed. Jim's efforts will be to coordinate rather than perform many of the tasks involved.

The Chairman confirmed Jim Oliver to continue as Chairman of the Information Collection Committee.

Ann Edwards, Evelyn Solf, and Bernice Newland were named to the Hospitality Committee. One will be named as Chairwoman in the near future.

Director Pete Abresch was named to chair a Constitutional Revision Committee which will recommend changes necessary to the PBA governing documents in line with developing structure and achievement factors. Among the topics to be reviewed are membership classes, allocation of funds, Newsletter costs, and others.

Board Chairman Pottberg announced that Milton Kidd, as First Vice-President, would be charged with overall responsibility for the Third Annual PBA Bonsai

Show in April 1974. He also named Dave Flipse as Show Co-Chairman.

By unanimous Board consent, Jim Newton remains as editor of the PBA Newsletter.

In compliance with the resolution made by the general membership, the Board discussed at length the problems involved in funding costs of the Newsletter. As the quality and circulation have risen since its inception in 1971, so have costs. Today's 8- or 12-page issue with photos runs about 2½ times as much as the first picture-less 8-page issues. A major problem arises from the fact that as PBA expands with establishment of affiliate clubs, the amount of money which is directly available to the Association for Newsletter publication lessens.

One partial solution is advertising. A Director of Advertising was recently appointed by Editor Jim Newton - Miss Tory Moore (soon to become Mrs. Clifton Pottberg) has already begun making preliminary contacts throughout the Washington metropolitan area.

Another suggested method of defraying costs is to solicit donations from members and non-members who receive the publication. Closely allied with this idea is the subscription method, applied to non-members or persons out of the area who desire to receive it.

In a positive action, although noted as a temporary measure only, the Board voted to recommend to PBA and affiliate club memberships that the per-capita club contribution be raised to \$2 per member. Each affiliate membership will have to be canvassed for consensus before the idea can be implemented.



for most everything
bonsai...
call 301-366-8844
or 301-771-4290
box 83
belfast road
sparks, maryland 21152